

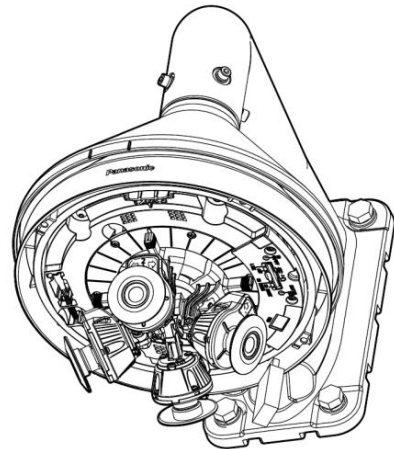
About inclination (YAW) angle adjustment method in multi- Sensor Cameras (WV-X8570N / S8530N)

Introduction

This document describes for installers, for multi-sensor cameras (WV-X8570N / S8530N) how to install and to adjust the tilt (YAW) angle at the same time by showing the images of the road as an example.

By adjusting the tilt (YAW) angle, it is possible to display the inclination of the target (road etc.) horizontally.

Please read "Installation Guide" and "How to adjust the angle of view in the typical installation example (for WV-X8570 and WV-S8530N)", uploaded as "WV-X8570N, S8530N Supplement" in Installation Manuals, carefully in advance.



Establishment such as on the wall of a building (Arrangement for 270-degree plus right below)

Slope (YAW) Without Angle Adjustment

With the images of cameras 1 and 3 at both ends, the target: the road (red line) is tilted.

Pictures of cameras 1, 2 and 3 with PAN

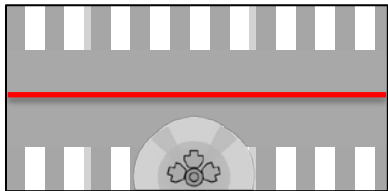
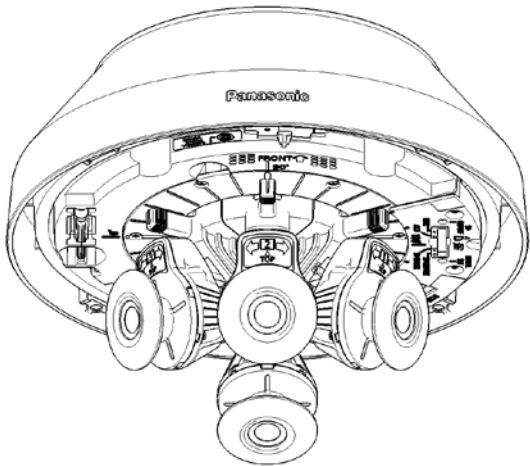


Image of the subject



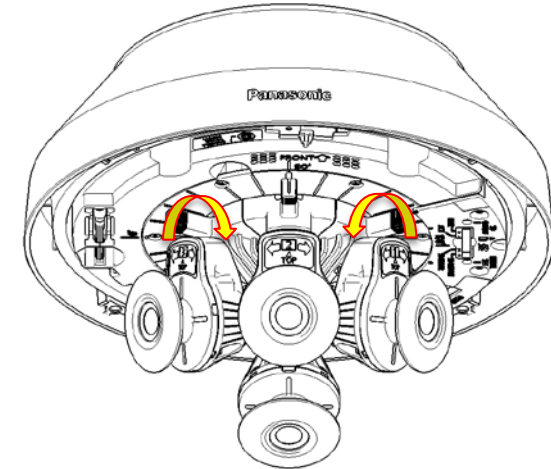
Establishment such as on the wall of a building (Arrangement for 270-degree plus right below)

When the inclination (YAW) angle is adjusted

A target located above the center of the screen: You can adjust the slope (YAW) of the road (red line) horizontally.

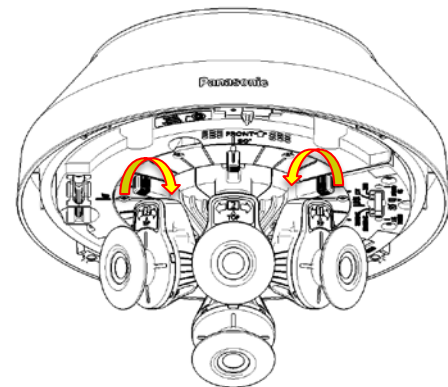


Slope (YAW) Angle adjustment method
Adjust the tilt (YAW) of cameras 1 and 3 to the direction shown in the figure.



When installing on the wall of the building etc. TILT, YAW adjustment angle reference chart

Pattern	Cam2		Cam1,3	Cam1	Cam3	Cam4	
	TILT (°) *1	YAW (°)	TILT (°)	YAW (°) *2	YAW (°)	TILT (°) *3	YAW (°)
1	80 (0notch)	0	80 (0notch)	-10 (2notch)	10	105 (0notch)	0
2	75 (1notch)	0	80 (0notch)	-10 (2notch)	10	105 (0notch)	0
3	70 (2notch)	0	80 (0notch)	-15 (3notch)	15	105 (0notch)	0
4	65 (3notch)	0	80 (0notch)	-20 (4notch)	20	105 (0notch)	0
5	60 (4notch)	0	75 (1notch)	-20 (4notch)	20	100 (1notch)	0
6	55 (5notch)	0	75 (1notch)	-25 (5notch)	25	100 (1notch)	0
7	50 (6notch)	0	75 (1notch)	-30 (6notch)	30	95 (2notch)	0
8	45 (7notch)	0	70 (2notch)	-30 (6notch)	30	90 (3notch)	0
9	40 (8notch)	0	70 (2notch)	-35 (7notch)	35	90 (3notch)	0
10	35 (9notch)	0	70 (2notch)	-40 (8notch)	40	85 (4notch)	0
11	30 (10notch)	0	70 (2notch)	-45 (9notch)	45	80 (5notch)	0



YAW Clockwise + side
YAW Counterclockwise -side

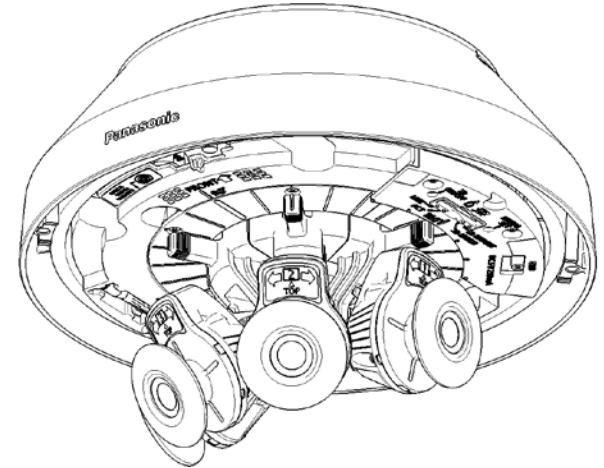
- *1 When the camera 1, 2, 3 horizontal side TILT end is set to 0-notch
- *2 When YAW vertical is set to 0-notch
- *3 When the TILT end on the lower side of the camera 4 is set to 0-notch

Establishment such as on the wall of a building (Arrangement for 360-degree shooting)

5/7

Slope (YAW) Without Angle Adjustment

The red line (road) of the target is tilted with the image of each camera.



Pictures of cameras 1, 2, 3, and 4 that are placed close to each other



Establishment such as on the wall of a building (Arrangement for 360-degree shooting)

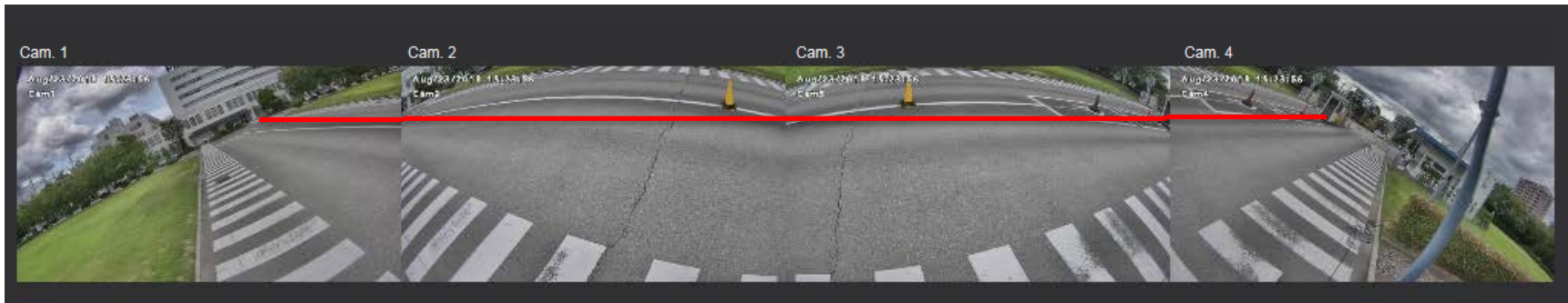
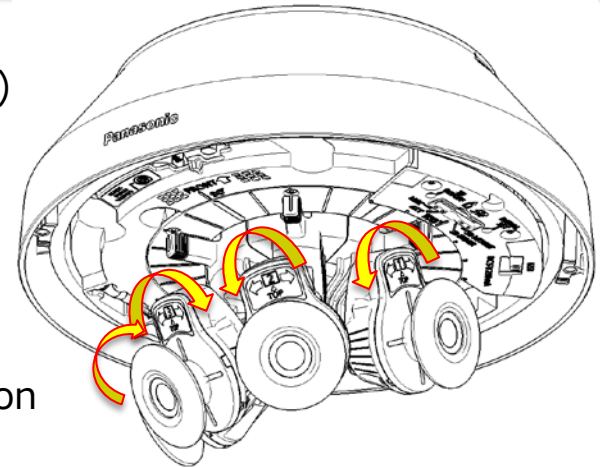
6/7

When the inclination (YAW) angle is adjusted

Target: You can adjust the slope (YAW) of the road (red line) horizontally in the upper 30% of the screen.

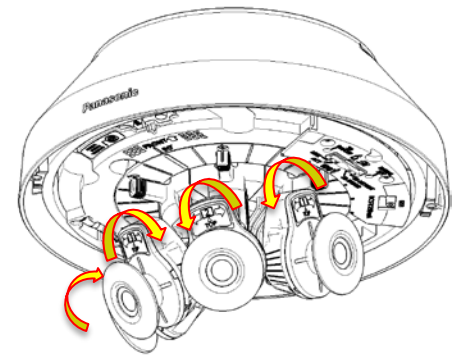
Slope (YAW) Angle adjustment method

Adjust the tilt (YAW) of cameras 1, 2, 3, and 4 to the direction shown in the figure.



Establishment such as on the wall of a building (Arrangement for 360-degree shooting)

	Cam2,3	Cam2	Cam3	Cam1,4	Cam1	Cam4
Pattern	TILT (°) *1	YAW (°) *2	YAW (°)	TILT	YAW (°)	YAW (°)
1	80 (0notch)	-5 (1notch)	5	80 (0notch)	-15 (3notch)	15
2	75 (1notch)	-5 (1notch)	5	80 (0notch)	-15 (3notch)	15
3	70 (2notch)	-10 (2notch)	10	80 (0notch)	-20 (4notch)	20
4	65 (3notch)	-10 (2notch)	10	80 (0notch)	-25 (5notch)	25
5	60 (4notch)	-15 (3notch)	15	80 (0notch)	-30 (6notch)	30



YAW Clockwise + side
YAW Counterclockwise -side

- *1 When the horizontal side TILT end is set to 0-notch
- *2 When YAW vertical is set to 0-notch