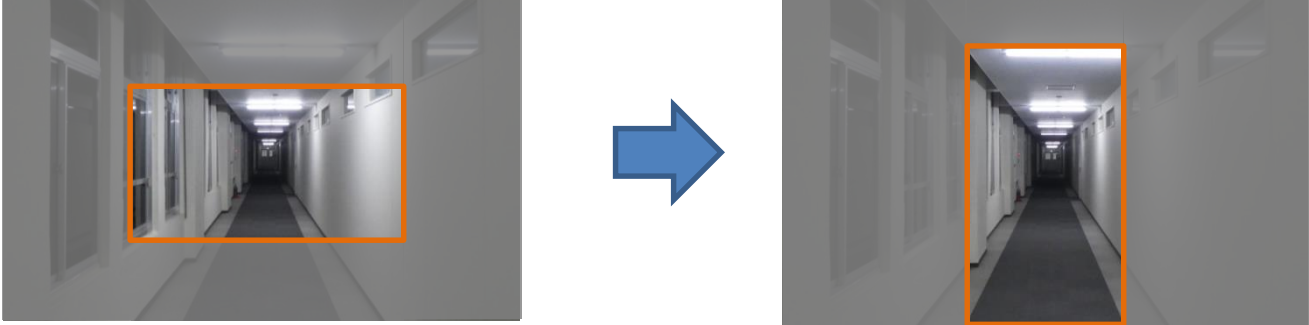


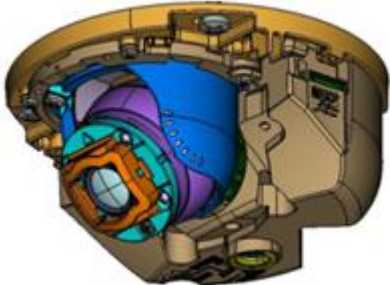

# Setting method of Portrait (Corridor) mode (9:16)

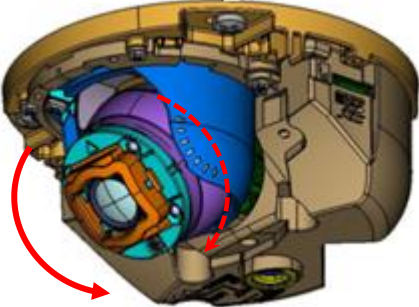

This product can be monitored with a wide vertical viewing angle by using the Portrait (Corridor) mode (9:16) when monitoring corridors, aisles, etc.

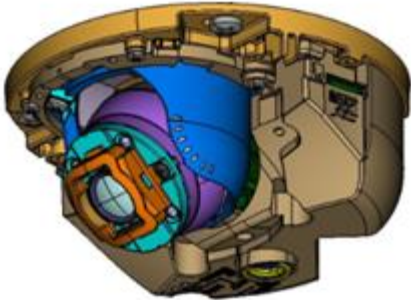

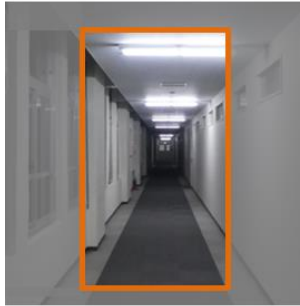
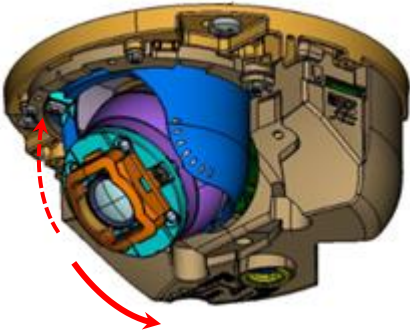
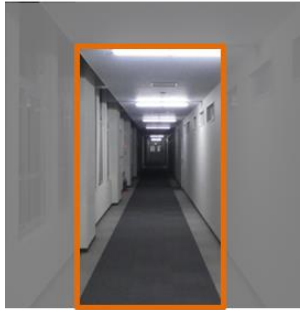


The setting procedure is described as follow.

- \*1. It explains in the case of the ceiling setting.
- \*2. The camera unit is an illustration with the cover removed.

Procedure	Camera Unit	Image
1. Attach to the ceiling. (The camera direction in right view shows the factory default.)		

Procedure	Camera Unit	Image
<p>2. Rotate the YAW angle 90 degrees clockwise or counterclockwise.</p>	 <p>A cutaway diagram of a camera unit showing internal components. A red curved arrow indicates a clockwise rotation. A blue arrow points downwards to a second diagram where the camera unit is rotated 90 degrees counter-clockwise, as indicated by a red curved arrow and the text "Rotated 90 degrees counterclockwise."</p> <p>Rotated 90 degrees counterclockwise.</p>	 <p>A photograph of a hallway with a white wall on the left and a dark wall on the right. An orange rectangular box highlights the central portion of the hallway. A blue arrow points downwards to a second photograph where the hallway image has been rotated 90 degrees counter-clockwise, so the dark wall is now on the left and the white wall is on the right. The orange box remains in the same relative position.</p>

Procedure	Camera Unit	Image
<p>3. Use the “Image rotation” function on the Basic settings menu to rotate 90 ° or 270 ° to align the top and bottom of the screen.</p>		 <p style="text-align: center;">↓</p>  <p style="text-align: right;">90 ° "Image rotation"</p>
<p>4. Adjust the TILT angle to obtain the desired vertical viewing range.</p>		 <p style="text-align: right;">↓ Adjust the TILT angle downward.</p>