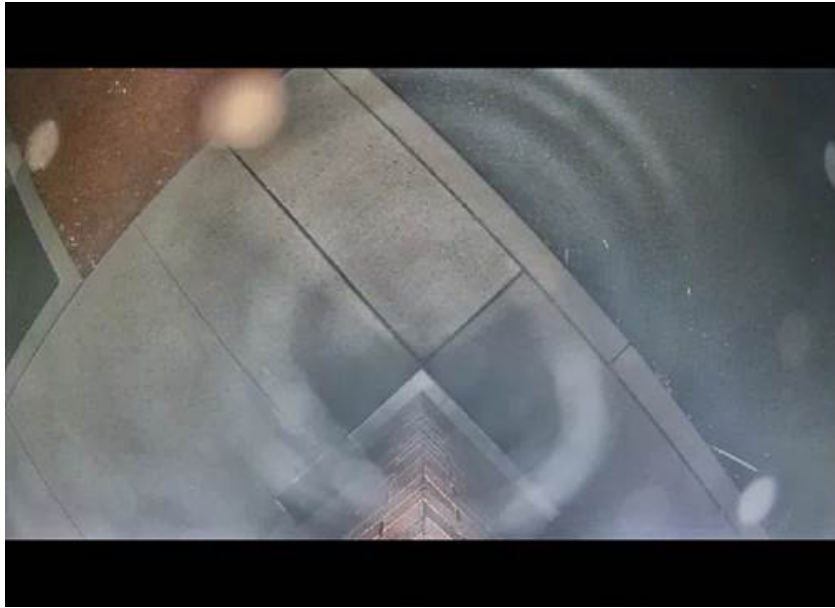


How to avoid image distortion due to the ponding water on the ClearSight dome cover

Issue

The multi-sensor cameras have poor visibility at the bottom in the raining.



Cause

Water is ponding at the bottom of the dome. This is caused by ClearSight coating.

Updated: Mar., 2021

Issued: July, 2020



How to avoid image distortion due to the ponding water on the ClearSight dome cover

Countermeasure

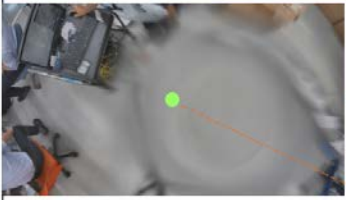


Change the tilt angle to avoid affect by the ponding water

[Case of multi-sensor camera]

WV-X8570N: tilt 10 degree (2 notches), WV-S8530N: tilt 15 degree (3 notches)

WV-X8571N: tilt 10 degree (4 notches), WV-S8531N: tilt 15 degree (6 notches)



Tilt angle	0 (just under direction)	1 notch (5deg)	2 notches (10deg)
	×	×	○
Camera images			

influenced by waterdrop : ×
not influenced by waterdrop : ○

right below

The influence of waterdrop can be avoided by tilting lens unit for 2 notches (Tilt angle 10 deg)

How to avoid image distortion due to the ponding water on the ClearSight dome cover on the ClearSight dome cover

Difference in vision with ponding water

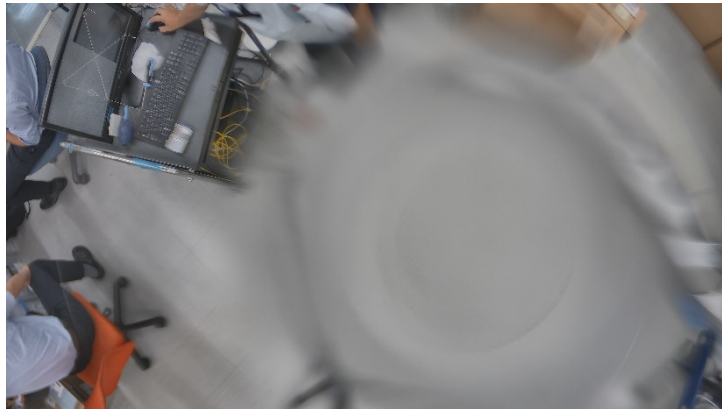
Difference between Tilt angle 0 deg and 10 deg



Tilt angle
0 deg



Tilt angle
10 deg



How to avoid image distortion due to the ponding water on the ClearSight dome cover on the ClearSight dome cover

Difference in vision without ponding water

Difference between Tilt angle 0 deg and 10 deg



Tilt angle
0 deg



Tilt angle
10 deg

