



# Appropriate object size for each AI analytics in Grid display

June 30, 2021

Panasonic i-PRO Sensing Solutions Co., Ltd.

# Appropriate object size for each AI analytics in Grid display

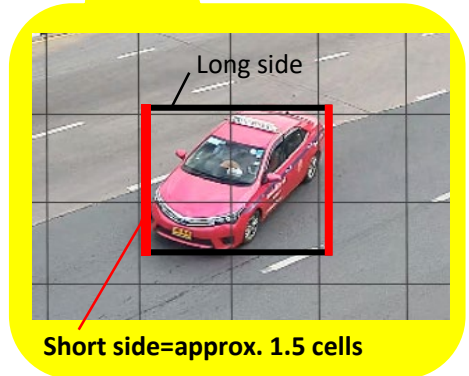
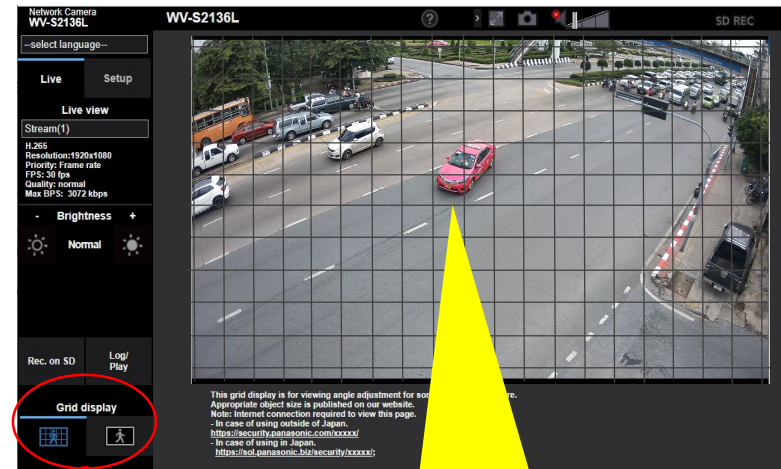
The number of cells in the below chart is the recommended size for each AI analytics provided for guidance purpose.

Note: Accuracy may differ depending on the actual environment. Check the accuracy after camera installation and adjust the camera view angle if necessary.

Applicable models: Check the camera type in the chart

Supported browsers: Google Chrome, Firefox, and Microsoft Edge

Extension software can be downloaded at [https://security.panasonic.com/training\\_support/documentation\\_database/](https://security.panasonic.com/training_support/documentation_database/)



| Extension software   | Size Criteria | Camera type                 |            |               |
|--|---------------|-----------------------------|------------|---------------|
|  |               | X-Series (V1.50 or later)*4 |            | S-Series*3, 4 |
|  |               | 4K models                   | 5MP models | FullHD models |
| Recommended size   |               |                             |            |               |
| AI Face Detection  | facial width  | 1 cell                      | 1 cell     | 1 cell        |
| AI People Detection  | body width    | 1 cell                      | 1 cell     | 1 cell        |
| AI Vehicle Detection   | short side    | 1 cell                      | 1 cell     | 2 cells       |
| AI-VMD   | (*1)          | 1 cell                      | 1 cell     | 1 cell        |
| AI Privacy Guard   | (*2)          | 1 cell                      | 1 cell     | 1 cell        |
| AI Non Mask Detection (WV-XAE203W)<br>*Available in limited regions  | facial width  | 1 cell                      | 1 cell     | 2 cells       |
| AI Occupancy Detection (WV-XAE207W)<br>*Available in limited regions | body width    | 1 cell                      | 1 cell     | 1 cell        |

\*1: [Detection object] = "Human": body width  
 [Detection object] = "Vehicle": short side  
 [Detection object] = "Bicycle": short side

\*2: [Privacy Guard target] = "Face": facial width  
 [Privacy Guard target] = "Human": body width

\*3: Object size can be checked using the "Show grid" function in [i-PRO Configuration Tool](#) version 2.0 or later.

\*4: Object size for the following applications can be checked using the grid display in [App Settings] under [Ext. Software Management] in [i-PRO Configuration Tool](#) version 2.0 or later: AI Face Detection, AI People Detection, and AI Vehicle Detection

iii-PRO