

Countermeasure of WV-ASM300 Screen Display Issue on Win 10 version 1903

We released in June, 2019, that Windows 10 version 1903 may not display some setting screens of WV-ASM300 correctly. Now the cause of issue was found to be a bug in the first version of .NET Framework 4.8 provided by Microsoft. Therefore, please note that this occurs on any PC with .NET Framework 4.8 installed, regardless of the Operating System (OS) version.

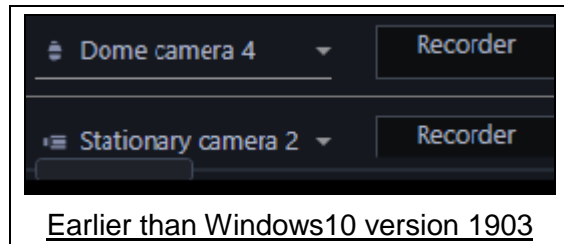
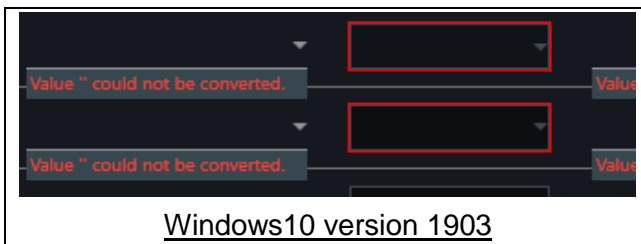
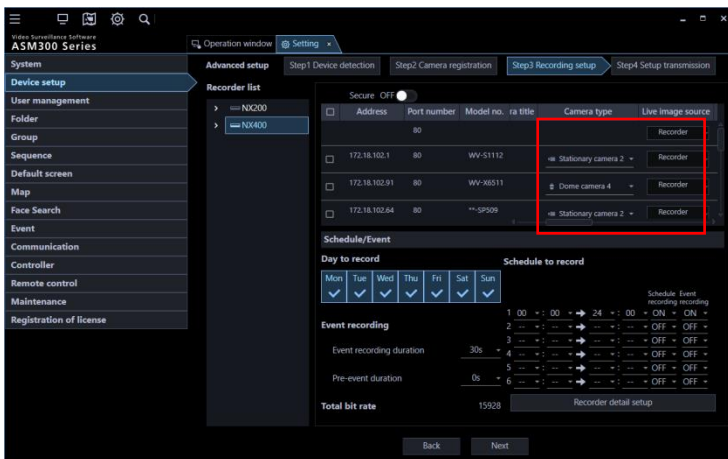
■ Applicable Screens

- [Setup], [Device setup], [Initial setup], [Step1 Device detection]
- [Setup], [Device setup], [Advanced setup], [Step1 Device detection]
- [Setup], [Device setup], [Advanced setup], [Step3 Recording setup]
- [Setup], [Device setup], [Device setup],

■ Phenomenon

The display at combo boxes abnormal as follow by scrolling the list displayed on the applicable screen repeatedly. However, the abnormality is just a display only, and possible to select setting values from the combo boxes by mouse click normally.

- The contents of the combo box become blank.
- Display either the combo boxes in red frame or 'Value " could not be converted' in red.



■ Countermeasure

The issue will be solved by updating the .NET Framework to version 4.8.x, latest version, from Windows Update.