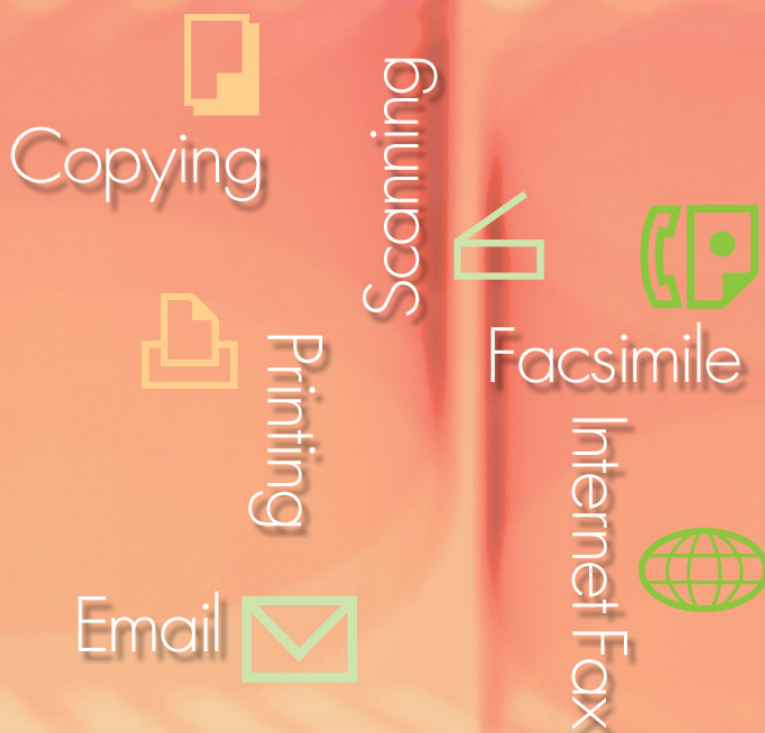


Operating Instructions

Software (Setting Up PostScript3 Printer Driver)

For Digital Imaging Systems



Before using this software, please carefully read these instructions completely and keep these operating instructions in a safe place for future reference.

The following trademarks and registered trademarks are used throughout this manual:

Microsoft, MS-DOS, Windows, Windows Server, Windows Vista, PowerPoint, Excel and Internet Explorer are either registered trademarks or trademarks of Microsoft Corporation in the United States and/or other countries.

Microsoft product screen shot(s) reprinted with permission from Microsoft Corporation.

i386, i486, Intel, Celeron, Intel Centrino, Pentium and Itanium are trademarks of Intel Corporation and its subsidiaries.

IBM and AT are the trademarks or registered trademarks of International Business Machines Corporation in the U.S. and other countries.

The USB-IF Logos are trademarks of Universal Serial Bus Implementers Forum, Inc.

Mac, Mac OS, Macintosh, True Type and Apple are trademarks of Apple Inc., registered in the U.S. and other countries.

Novell, NetWare, IntranetWare, NDS are registered trademarks of Novell, Inc. in the USA and other countries.

PEERLESSPage™ is a trademark of the PEERLESS Systems Corporation; and, PEERLESSPrint® and Memory Reduction Technology® are registered trademarks PEERLESS Systems Corporation; and, COPYRIGHT © 2005 PEERLESS Systems Corporation.

COPYRIGHT © 2005 Adobe Systems Incorporated. All Rights Reserved; and Adobe® PostScript® 3™.

Universal Font Scaling Technology (UFST) and all typefaces have been licensed from Monotype Imaging Inc.

Monotype® is a registered trademark of Monotype Imaging Inc. registered in the U.S. Patent and Trademark Office and may be registered in other jurisdictions.

ColorSet™ is a registered trademark of Monotype Imaging Inc. registered in the U.S. Patent and Trademark Office and may be registered in other jurisdictions. ColorSet™ Profile Tool Kit, Profile Studio and Profile Optimizer are trademarks of Monotype Imaging Inc. and may be registered in certain jurisdictions.

COPYRIGHT © 2007 Monotype Imaging Inc. All Rights Reserved.

PCL is a trademark of Hewlett-Packard Company.

Adobe, Acrobat, Adobe Type Manager, PostScript, PostScript 3 and Reader are either registered trademarks or trademarks of Adobe Systems Incorporated in the United States and/or other countries.

Application software for this device contains a number of programs licensed under the terms of the GNU Lesser General Public License and other open software. For more details and applicable license thereof, please refer to the Read Me file for the software.

All other product/brand names, trademarks or registered trademarks identified herein are the property of their respective owners.

In these Operating Instructions, some ™ and ® marks are omitted from the main text.

© Panasonic Communications Co., Ltd. 2006-2009

Unauthorized copying and distribution is a violation of law.

Panasonic accepts no liability for any effects resulting from the use of this software or manual.

Published in Japan.

The contents of these Operating Instructions are subject to change without notice.

Table of Contents

System Requirements	4
General Installation Overview	6
Installation for Windows	10
■ Installing the Drivers and Utilities for Network Printer (Complete Install) <For Panasonic Color MFP>	10
■ Installing the Drivers and Utilities for Network Printer (Complete Install) <For Panasonic Monochrome MFP>	14
■ Installing the Driver for USB Port Connection	18
■ Installing the Drivers for Parallel Port Connection	24
■ Device Settings	26
■ Setting Up the Shared Setting for Server PC	27
■ Setting Up the Client PC	33
Installation for Macintosh	36
■ Installation for Mac OS 8.6/9.x	36
■ Installation for Mac OS X	45
■ Device Settings	58
Utilities	62
■ Job Status Utility	62
Installing the Job Status Utility	62
Setting Up the Job Status Utility	65
■ PS Driver Security Utility	66
Installing the PS Driver Security Utility for Windows	66
Using the PS Driver Security Utility for Windows	69
Installing the PS Driver Security Utility for Macintosh	70
Using the PS Driver Security Utility for Macintosh	72

NOTE

Model availability depends on the destination country.

System Requirements

- Personal Computer : IBM® PC/AT® and compatibles (CPU Intel® Pentium® 4 1.6 GHz or greater is recommended)
Apple® Macintosh® computer (PowerPC G3 or greater is required, G4 or greater is recommended)
- Operating System : Microsoft® Windows® 2000 operating system (Service Pack 4 or later)*¹,
Microsoft® Windows® XP operating system (Service Pack 2 or later)*²,
Microsoft® Windows Server® 2003 operating system (Service Pack 1 or later)*³,
Microsoft® Windows Vista® operating system*⁴,
Microsoft® Windows Server® 2008 operating system*⁵,
Mac OS® 8.6/9.x*⁶,
Mac OS® X 10.1-10.5*⁷.

*The following Operating System is not supported :

Microsoft® Windows Server® 2003 Enterprise Edition for Itanium®-based systems,
Microsoft® Windows Server® 2008 Enterprise Edition for Itanium®-based systems.

- Application Software: Microsoft® Internet Explorer® 6.0 Service Pack 1 or later,
Microsoft® .NET Framework Version 2.0,
.NET Framework Version 2.0 Language Pack.
- System Memory : Recommended Memory for each OS:

Microsoft® Windows® 2000 operating system	: 256 MB or more
Microsoft® Windows® XP operating system	: 512 MB or more
Microsoft® Windows Server® 2003 operating system	
Microsoft® Windows Vista® operating system	: 1 GB or more
Microsoft® Windows Server® 2008 operating system	
Mac OS® 8.6/9.x	: 128MB or more
Mac OS® X 10.1-10.5	
- Interface : 10Base-T/100Base-TX/1000Base-T Ethernet Port, USB Port, Parallel Port
(The interface that can be used is different depending on the model)
- Free Disk Space : 300 MB or more (For installation and work space, not including storage space for additional fonts).
- CD-ROM Drive : Used for installing the software and utilities from the CD-ROM.

*1 Microsoft® Windows® 2000 operating system (hereafter Windows 2000)

*2 Microsoft® Windows® XP operating system (hereafter Windows XP)

*3 Microsoft® Windows Server® 2003 operating system (hereafter Windows Server 2003)

*4 Microsoft® Windows Vista® operating system (hereafter Windows Vista)

*5 Microsoft® Windows Server® 2008 operating system (hereafter Windows Server 2008)

*6 Apple® Mac OS® 8.6/9.x operating system (hereafter Mac OS 8.6/9.x)

*7 Apple® Mac OS® X operating system (hereafter Mac OS X)

Memo

General Installation Overview

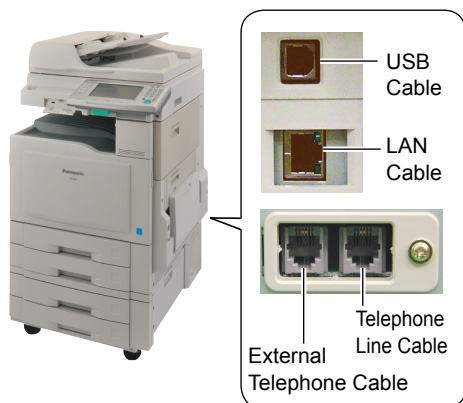
Follow the guidelines in this booklet when installing, and setting up the printer driver. Please read all procedures completely before attempting to setup the PostScript®3™ Printer Driver. Prior to the installation of the PostScript®3™ Printer Driver, the device's network settings need to be configured. Please consult your service provider for more details.

1 Connection

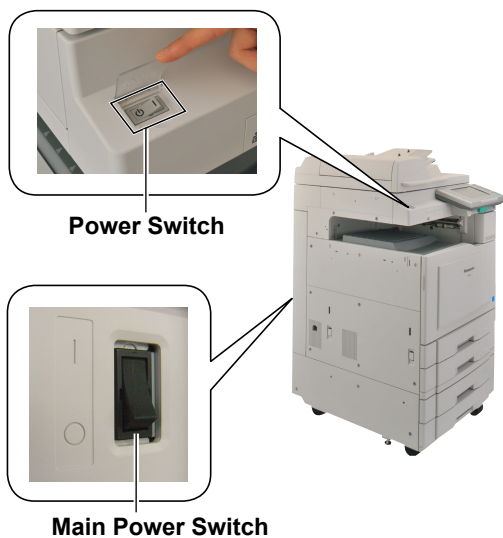
- ① Use a LAN cable when connecting the printer to the Network.
Use an USB, or Parallel cable when connecting as a local printer.
- ② Turn ON (I) the Main Power Switch first, and then turn ON (I) the Power Switch.

Main Power Switch: Rear of the machine.
Power Switch: Left, or Right side of the machine.

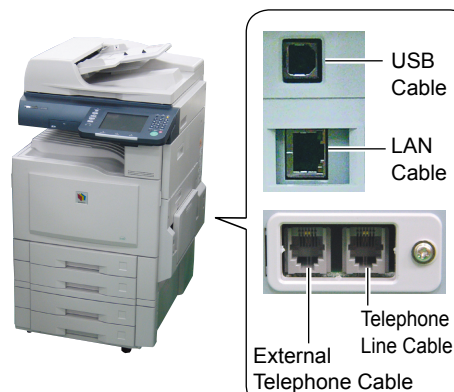
DP-C406/C306/C266



- USB Cable is used for Local Printer connection.



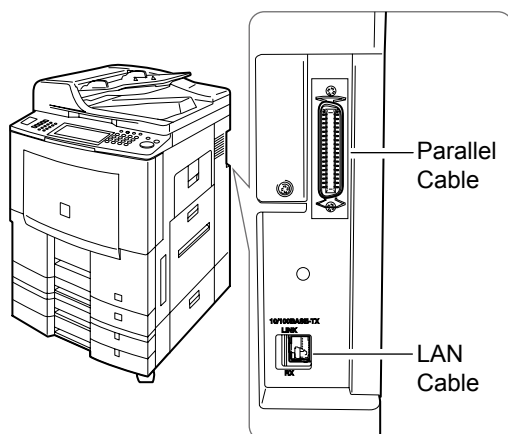
DP-C405/C305/C265, DP-C354/C323/C264/C263/C213



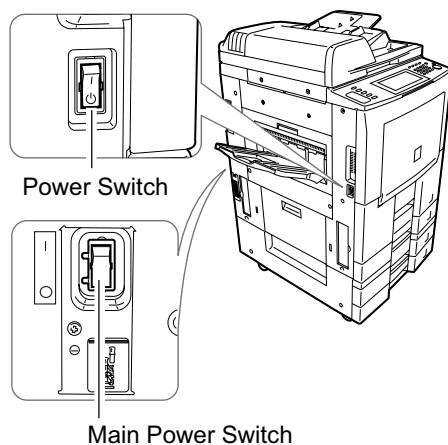
- USB Cable is used for Local Printer connection.



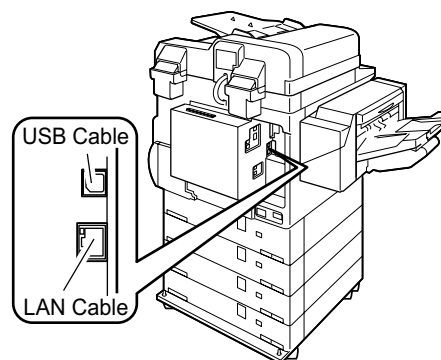
DP-8060/8045/8035



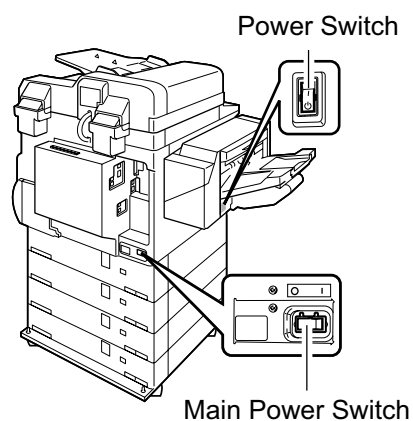
- Parallel Cable is used for Local Printer connection.



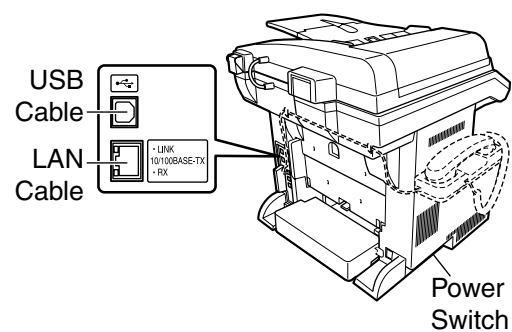
DP-8032/8025, DP-3030/2330



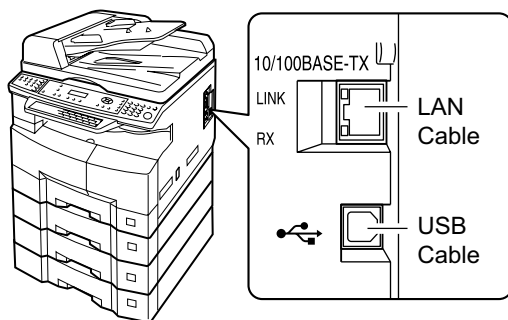
- USB Cable is used for Local Printer connection.



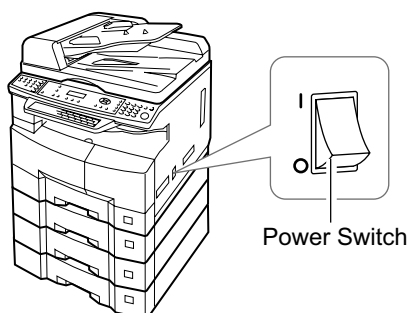
DP-190/180, UF-9000



DP-8020P/8020E



- USB Cable is used for Local Printer connection.



2 Installation

Install the printer driver and utility softwares.
If you want to install only a particular software, choose "Custom install" and select the desired software.

3 Setting up

■ Network Connection

If your PC is connected on a Client-Server environment, install the driver to the Server PC first, and then, on the Client PC. After completing the Driver installation, setup each PC.

For Windows OS

- Shared Setting
- Setting Up for Client

For Mac OS

- Create desktop (for Mac OS ver 8 or 9)
- Printer List Setting (for Mac OS X)
- Device Setting

■ Local Connection

- Device Setting

NOTE

- When using the Printer on the NetWare® network environment, install the IPX/SPX Setup Wizard. Refer to the Operating Instructions (For IPX/SPX Setup Wizard) on the provided CD-ROM.
- When there are two printer drivers (for Network Port Connection and Parallel, or USB Port Connection) for the same model, each printer driver can be used normally.
The printer driver can be selected from the Printer List of the Print Screen within the application software.
- Network Print Server Printer Connection
The Print Server name will be automatically added. On Peer to Peer Connection (Direct Connection), the Print Server name is not added. Change the Printer Name using the Windows Printer Settings for convenience.

4 Utilities

Job Status Utility (Windows OS only)

A Job Completion Notice will be displayed on the PC screen when the Print/Copy/Fax Job is completed.

PS Driver Security Utility

Utility to set the necessary parameters required in the Secure Printing.

Others

Please proceed installation, according to the instructions of the screen.

Memo

Installation for Windows

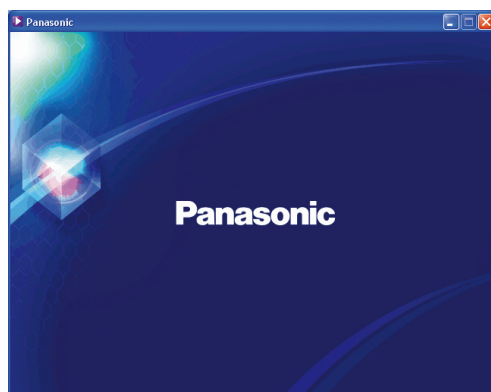
Installing the Drivers and Utilities for Network Printer (Complete Install) <For Panasonic Color MFP>

Install the PostScript3 driver, then install the Job Status Utility, and PS Driver Security Utility automatically. The printer must be connected to the network.

NOTE

PCL6 Printer Driver is not enclosed in the DP-C406/C306/C266, DP-C405/C305/C265, DP-C354/C323/C264/C263/C213 installer.

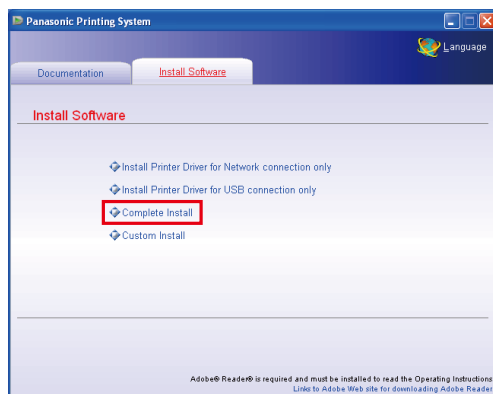
- 1 Insert the “**Panasonic Printing System**” CD-ROM.
The Panasonic opening screen is displayed.



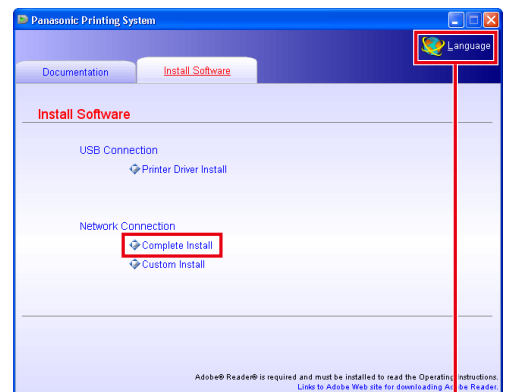
- If the CD-ROM does not launch automatically, double-click the CD-ROM icon displayed on the optical disk drive.

- 2 Select “**Complete Install**”.

<DP-C406/C306/C266>



<DP-C405/C305/C265, DP-C354/C323/C264/C263/C213>

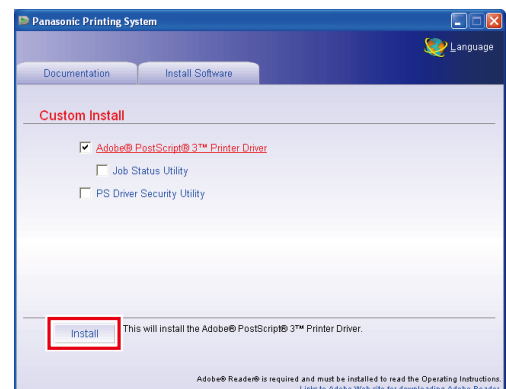


Language Selection

- Screen Language will be automatically selected by applying the language preset on your PC. If you want to change the language, click “**Language**”, and then choose the desired language, and click “**OK**”.

If you choose “**Custom Install**”, you can select the desired Software.

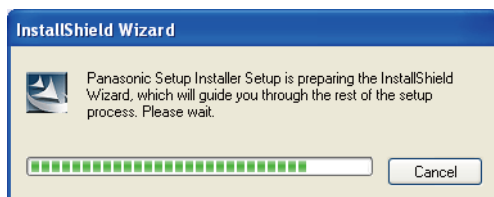
Click “**Install**”, and selected software will be installed.



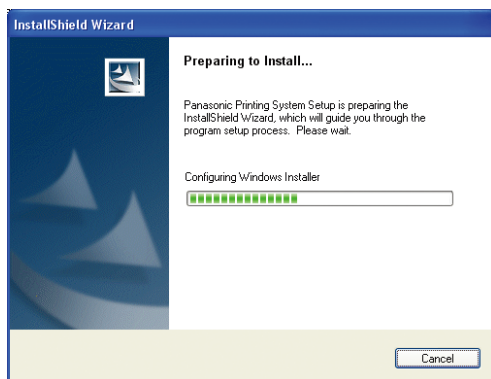
- You can install the applications you wish to install by checking the box next to the software names. Also, uncheck the box if you do not want to install any of the displayed software.

3 The InstallShield Wizard screen is displayed.

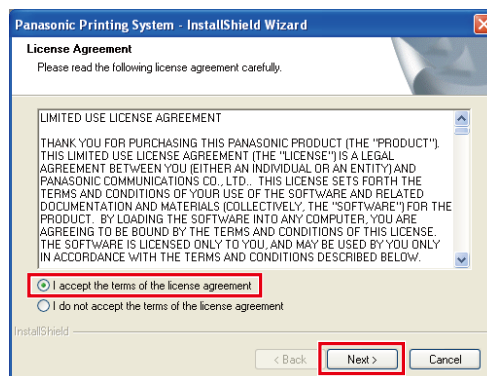
<DP-C406/C306/C266>



<DP-C405/C305/C265, DP-C354/C323/C264/C263/C213>

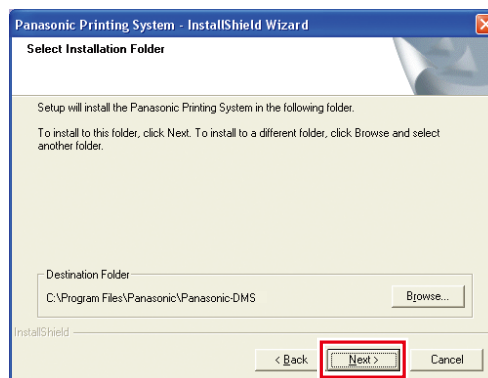


4 Check "I accept the terms of the license agreement", and then click "Next".



- Make sure that your printer is connected to the network properly, and the Power Switch is ON before clicking "Next".

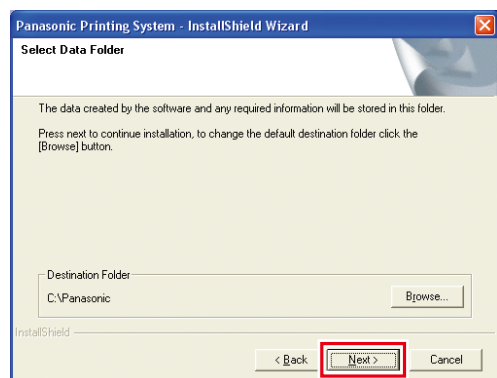
5 Click "Next".



- Above Screen will not be shown when another model's **Panasonic Printing System** has been installed.
- If you wish to change the folder, click "Browse", and then the desired folder to install.

6

Click **"Next"**.



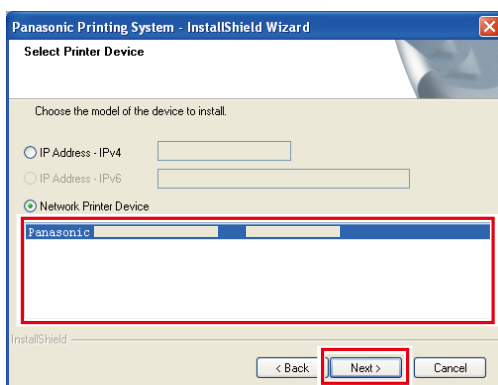
- Above Screen will not be shown when another model's **Panasonic Printing System** has been installed.
- If you wish to change the folder, click **"Browse"**, and then the desired folder to install.

7

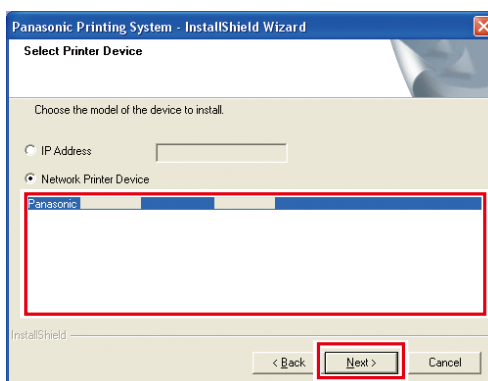
The Wizard automatically searches for printers connected to your network, and displays the found printers in the **Network Printer Device** window.

Select a printer, and then click **"Next"**.

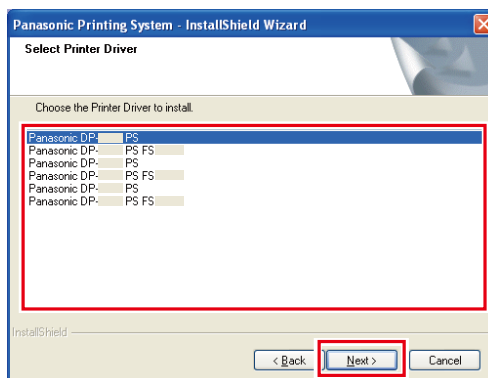
<DP-C406/C306/C266>



<DP-C405/C305/C265, DP-C354/C323/C264/C263/C213>

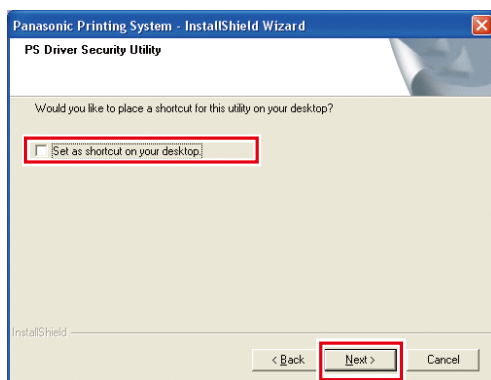


- Only the printers connected to your network can be used as a network printer.
- If your printer has not been connected to the network yet, enter its allocated IP Address, and then click **"Next"** to proceed with the installation.
- If installing other printer of different Subnet Mask of the network, select **"IP Address - IPv4"** or **"IP Address - IPv6"** of the printer.
- **"IP Address - IPv6"** can be selected on Windows Vista or later.

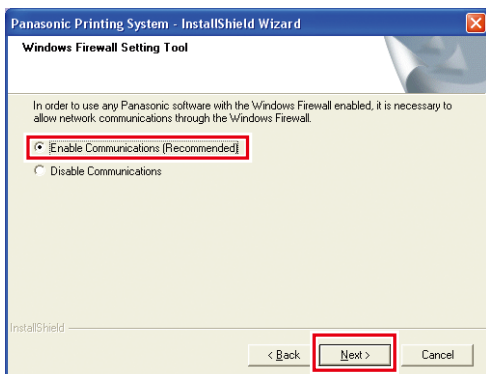


- **Panasonic DP-Cxxx :**
(Depicts a machine without a Finisher option, or with the 1 Bin Saddle Stitch Finisher (DA-FS405, DA-FS405W, DA-FS356), or Outer Tray (DA-XT320, DA-XT320W)).
- **Panasonic DP-Cxxx FSxxx :**
(Depicts a machine with the 1 Bin Finisher (DA-FS402, DA-FS402W, DA-FS350), or Outer Tray (DA-XT320, DA-XT320W)).

- 8 If you want to place the PS Driver Security Utility shortcut on your desktop, check the box. Click “Next”.

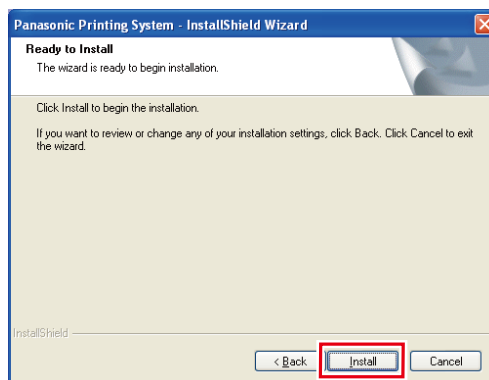


- 9 Select “Enable Communications (Recommended)”, and then click “Next”.

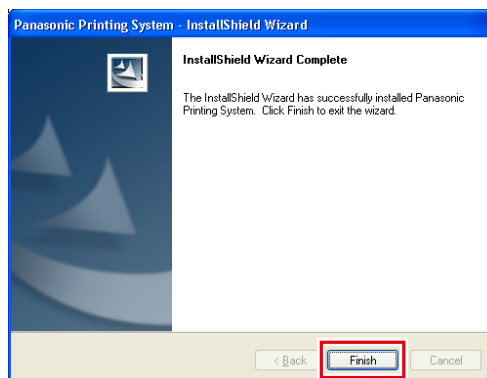


- Above screen only displays when you are installing the Job Status Utility on Windows XP (Service Pack 2 or later), Windows Server 2003 (Service Pack 1 or later), Windows Vista or Windows Server 2008.

- 10 Click “Install”.



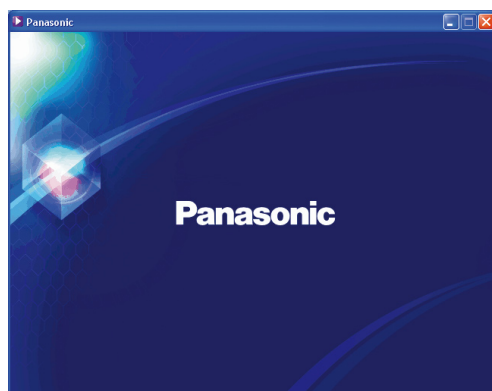
- 11 Click “Finish”.



Installing the Drivers and Utilities for Network Printer (Complete Install) <For Panasonic Monochrome MFP>

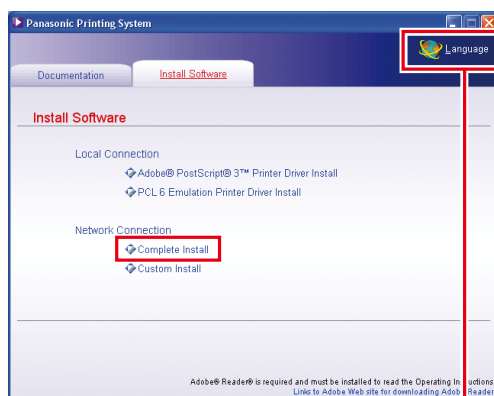
Install the PostScript3 driver and PCL6 Emulation driver. Then install the Job Status Utility and PS Driver Security Utility automatically. Your printer must be connected to the network.

- 1 Insert the **“Panasonic Printing System”** CD-ROM.
The Panasonic opening screen is displayed.



- If the CD-ROM does not launch automatically, double-click the CD-ROM icon displayed on the optical disk drive.

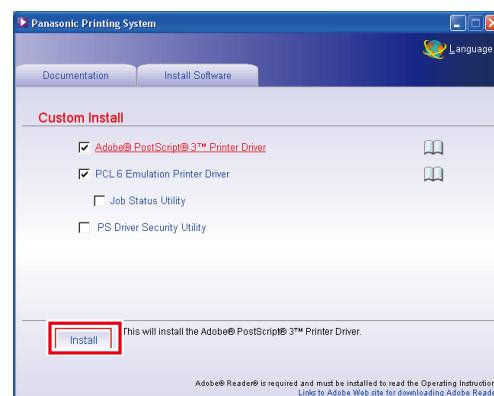
- 2 Select **“Complete Install”**.



Language Selection

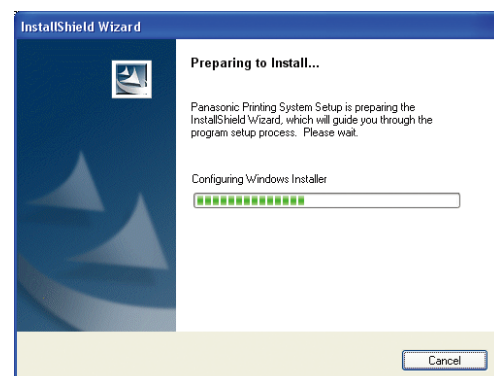
- Screen Language will be automatically selected by applying the language preset on your PC. If you want to change the language, click **“Language”**, and then choose the desired language, and click **“OK”**.

If you choose **“Custom Install”**, you can select the desired Software.
Click **“Install”**, and selected software will be installed.

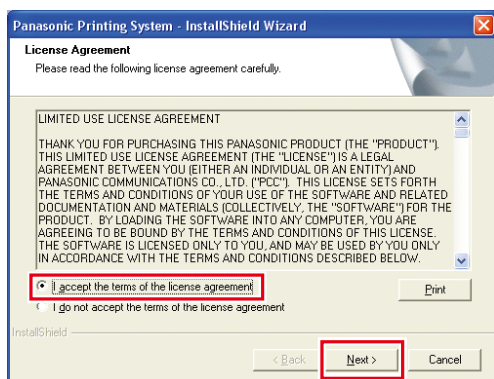


- You can install the applications you wish to install by checking the box next to the software names.
Also, unmark the check box if you do not want to install any of the displayed software.

- 3 The InstallShield Wizard screen is displayed.

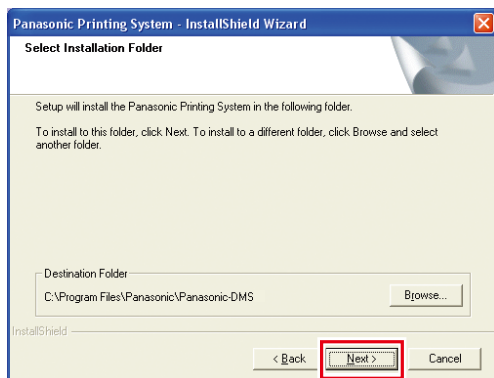


4 Check "I accept the terms of the license agreement", and then click "Next".



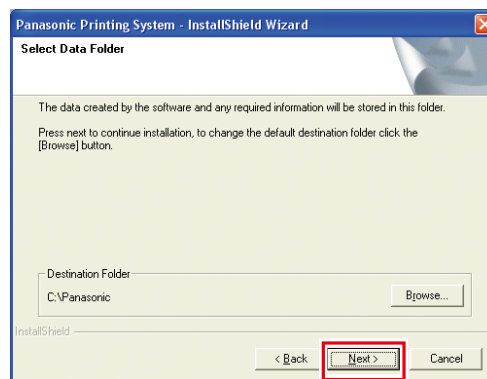
- Make sure that your printer is connected to the network properly, and the Power Switch is ON before clicking "Next".

5 Click "Next".



- Above Screen will not be shown when another model's **Panasonic Printing System** has been installed.
- If you wish to change the folder, click "Browse", and then the desired folder to install.

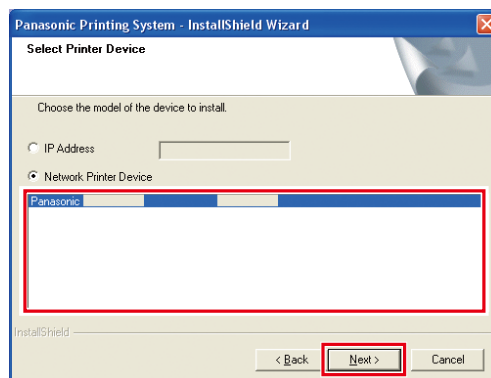
6 Click "Next".



- Above Screen will not be shown when another model's **Panasonic Printing System** has been installed.
- If you wish to change the folder, click "Browse", and then the desired folder to install.

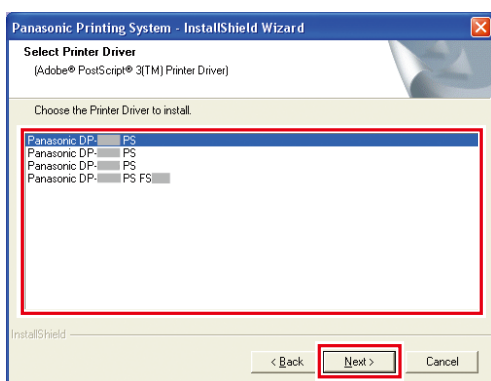
7 The Wizard automatically searches for printers connected to your network, and displays the found printers in the **Network Printer Device** window.

Select a printer, and then click "Next".



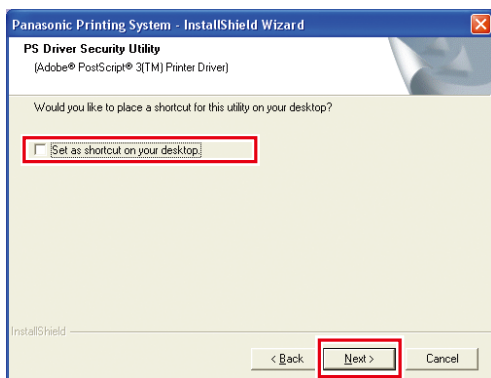
- Only the printers connected to your network can be used as a network printer.

- If your printer has not been connected to the network yet, check **"IP Address"** and enter its allocated IP Address in the screen of step 7 of the previous page. Then it will display the printers as shown in the following figure.
Select the desired printer, and click **"Next"**.



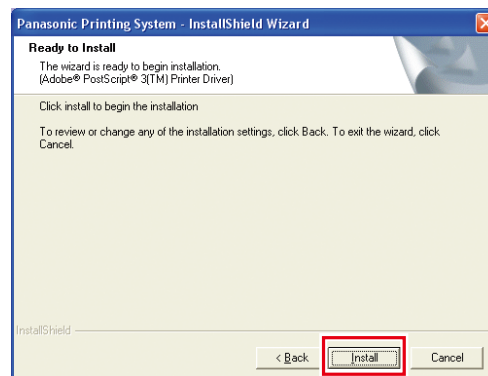
- Panasonic DP-xxxx PS :
(Depicts a machine without a Finisher option or with the 1-Bin Saddle-Stitch Finisher (DA-FS355), 2-Bin Saddle-Stitch Finisher (DA-FS605), or 2-Bin Finisher (DA-FS600)).
- Panasonic DP-xxxx PS FSxxx :
(Depicts a machine with the 2-Bin Finisher (DA-FS330)).

- 8 If you want to place the PS Driver Security Utility shortcut on your desktop, check the box. Click **"Next"**.



- Uncheck the box if you do not want to install any of the displayed software.

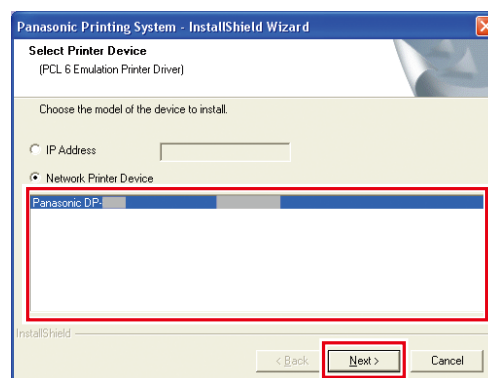
- 9 Click **"Install"**.



- 10 The Wizard automatically searches for printers connected to your network, and displays the found printers in the **Network Printer Device** window.

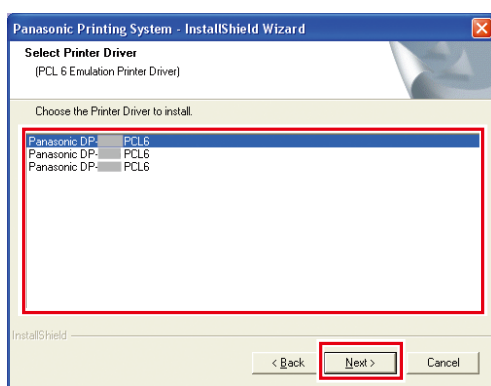
Select a printer, and then click **"Next"**.

- Installation of "PCL6 Emulation Printer Driver" begins from here.

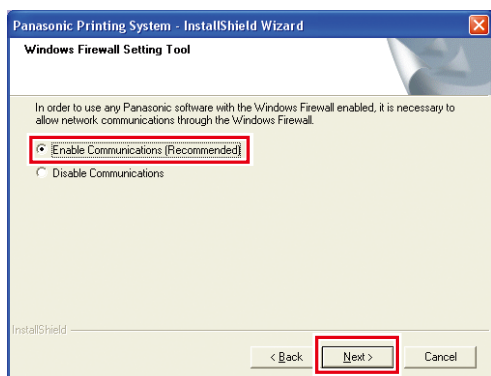


- Only the printers connected to your network can be used as a network printer.

- If your printer has not been connected to the network yet, check **“IP Address”** and enter its allocated IP Address in the screen of step 10 of the previous page. Then it will display the printers as shown in the following figure.
Select the desired printer, and click **“Next”**.

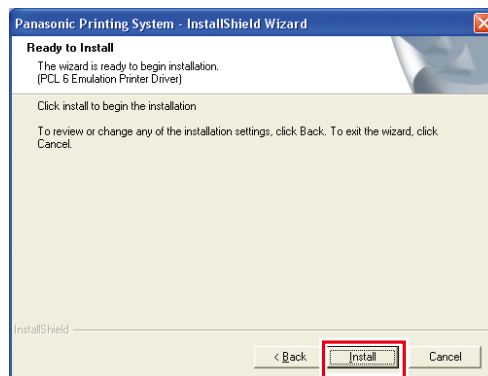


11 Select **“Enable Communications (Recommended)”**, and then click **“Next”**.

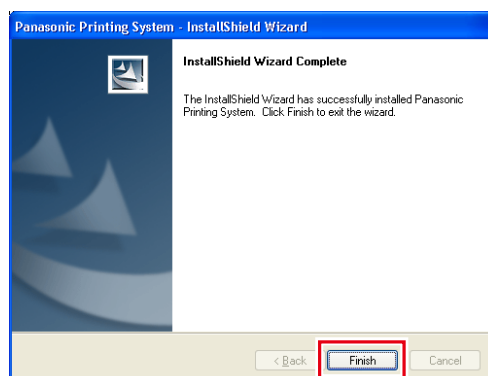


- Above screen only displays when you are installing the Job Status Utility on Windows XP (Service Pack 2 or later), Windows Server 2003 (Service Pack 1 or later), Windows Vista or Windows Server 2008.

12 Click **“Install”**.



13 Click **“Finish”**.

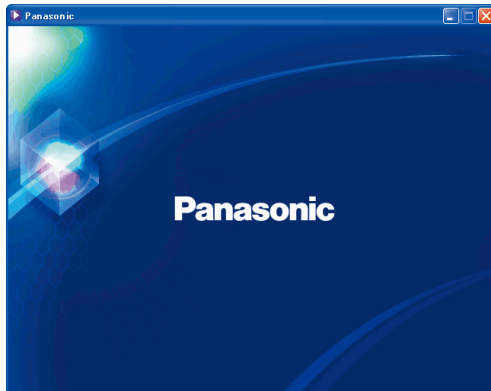


Installing the Driver for USB Port Connection

ATTENTION

- Do not turn the Power Switch ON (on the front side of the machine) until you reach step 9 (A, B, C).
- Do not connect the USB Cable until notified to do so.

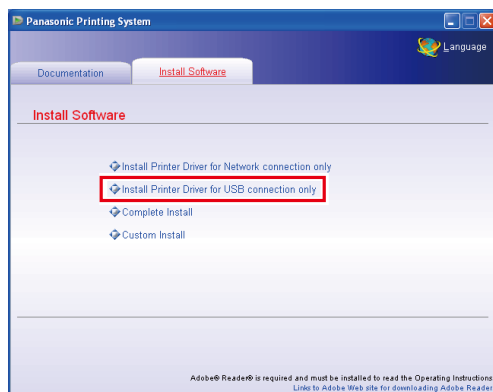
- 1 Insert the **“Panasonic Printing System”** CD-ROM.
The Panasonic opening screen is displayed.



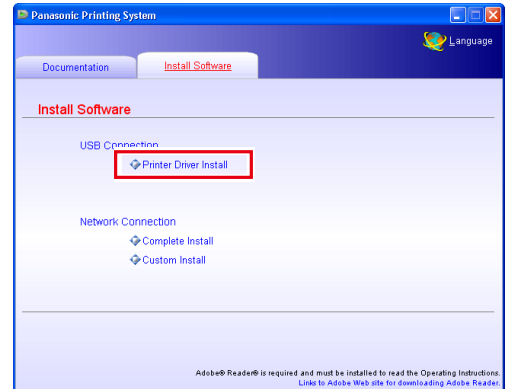
- If the CD-ROM does not launch automatically, double-click the CD-ROM icon displayed on the optical disk drive.

- 2 <For Panasonic Color MFP>
Select **“Install Printer Driver for USB connection only”** or **“Printer Driver Install”**.

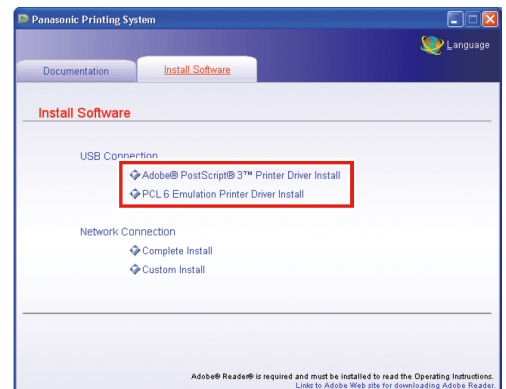
<DP-C406/C306/C266>



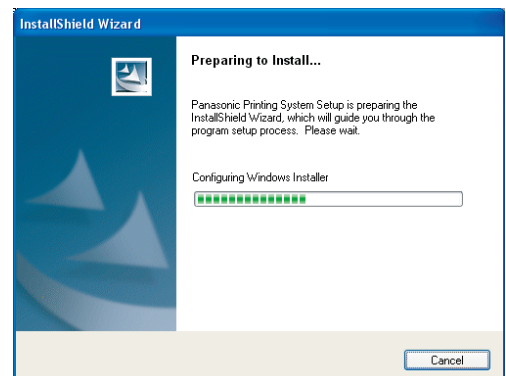
<DP-C405/C305/C265, DP-C354/C323/C264/C263/C213>



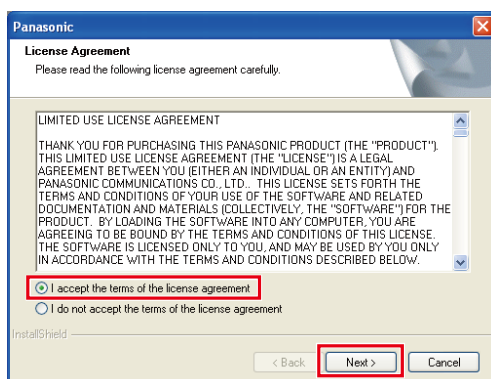
<For Panasonic Monochrome MFP>
Select **“Adobe® PostScript®3™ Printer Driver Install”** or **“PCL6 Emulation Printer Driver Install”**.



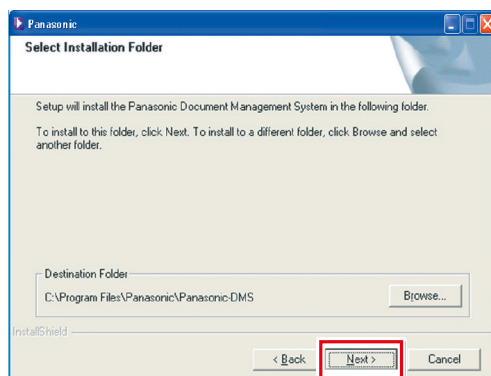
- 3 The InstallShield Wizard screen is displayed.



4 Check "I accept the terms of the license agreement", and then click "Next".

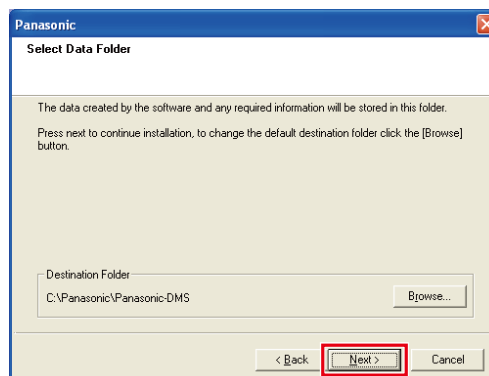


5 Click "Next".



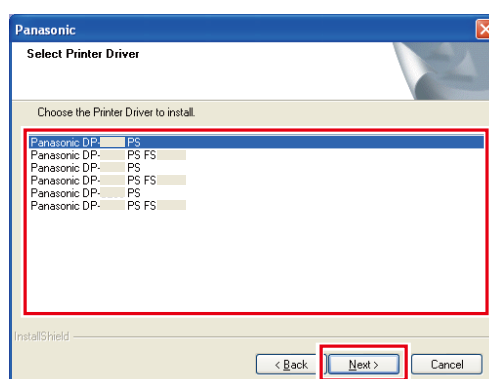
- Above Screen will not be shown if there is other model's **Panasonic Printing System** installed.
- If you wish to change the folder, click "**Browse**", and then the desired folder to install.

6 Click "Next".



- Above Screen will not be shown if there is other model's **Panasonic Printing System** installed.
- If you wish to change the folder, click "**Browse**", and then the desired folder to install.

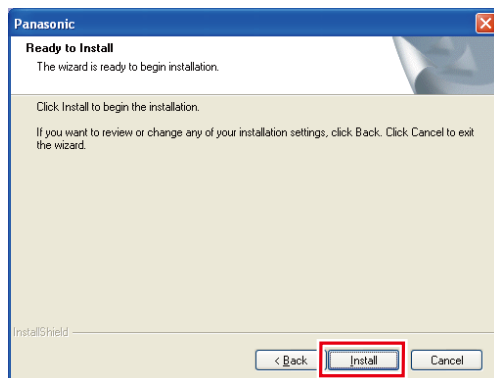
7 Select the Printer Driver that you want to install, and then click "Next".



- Panasonic DP-Cxxx :
(Depicts a machine without a Finisher option, or with the 1 Bin Saddle Stitch Finisher (DA-FS405, DA-FS405W, DA-FS356), or Outer Tray (DA-XT320, DA-XT320W)).
- Panasonic DP-Cxxx FSxxx :
(Depicts a machine with the 1 Bin Finisher (DA-FS402, DA-FS402W, DA-FS350), or Outer Tray (DA-XT320, DA-XT320W)).

- Panasonic DP-xxxx PS :
(Depicts a machine without a Finisher option or with the 1-Bin Saddle-Stitch Finisher (DA-FS355), 2-Bin Saddle-Stitch Finisher (DA-FS605), or 2-Bin Finisher (DA-FS600)).
- Panasonic DP-xxxx PS FSxxx :
(Depicts a machine with the 2-Bin Finisher (DA-FS330)).

8 Click "Install".

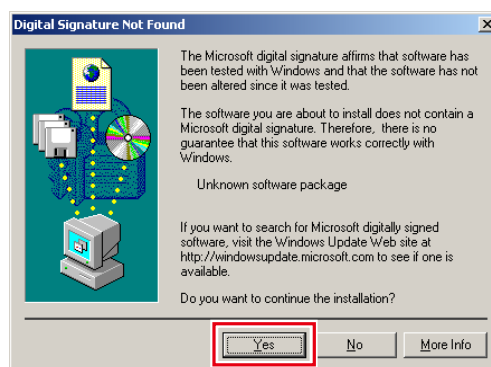


Windows 2000
go to steps 9A and 10

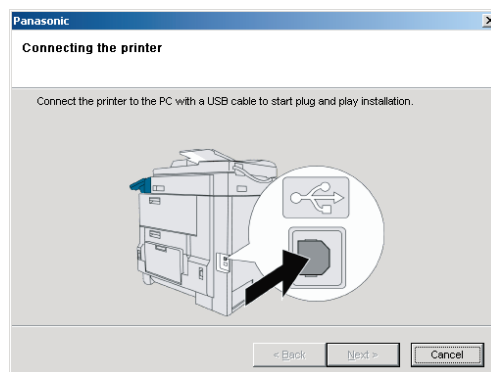
Windows XP / Windows Server 2003
go to steps 9B and 10

Windows Vista / Windows Server 2008
go to steps 9C and 10

9A-1 <Windows 2000> Click "Yes".

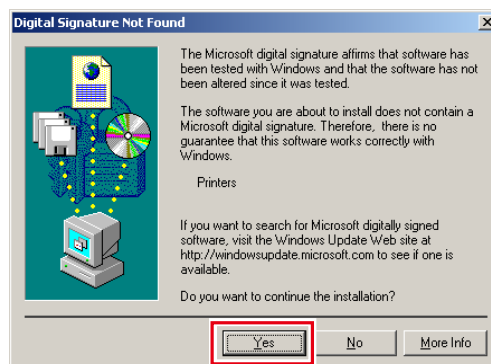


9A-2 Connect the USB cable to your machine, and then turn the Power Switch ON.



- Above screen will disappear automatically, if a printer is added.
- The displayed screen varies depending on the models.

9A-3 Click "Yes".

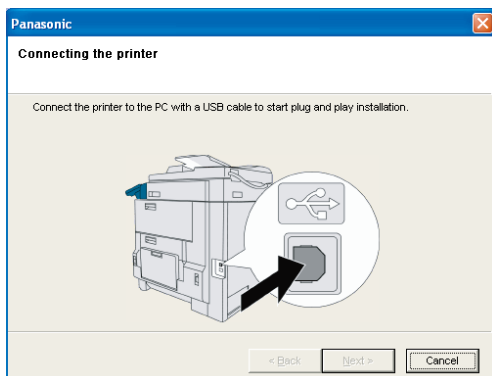


9B -1 <Windows XP / Windows Server 2003> Click "Continue Anyway".



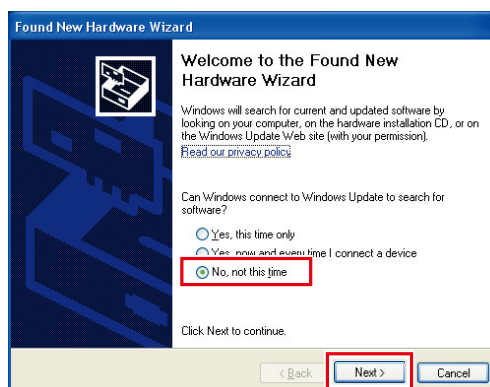
- The above screen will only be displayed when you install the printer driver for the first time.

9B -2 Connect the USB cable to your machine, and then turn the Power Switch ON.



- Above screen will disappear automatically, if a printer is added.
- The displayed screen varies depending on the models.

9B -3 Select "No, not this time", and then click "Next".

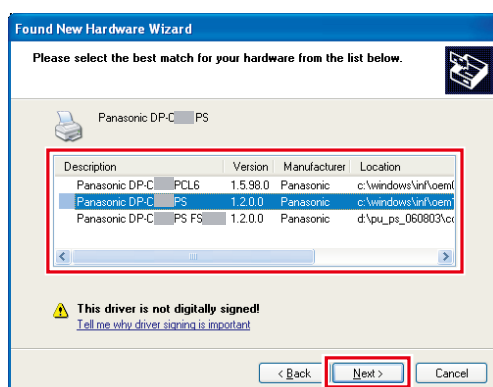


- Above screen will be displayed when you have installed the Windows XP (Service Pack 2 or later), Windows Server 2003 (Service Pack 1 or later).

9B -4 Select "Install the software automatically (Recommended)", and then click "Next".

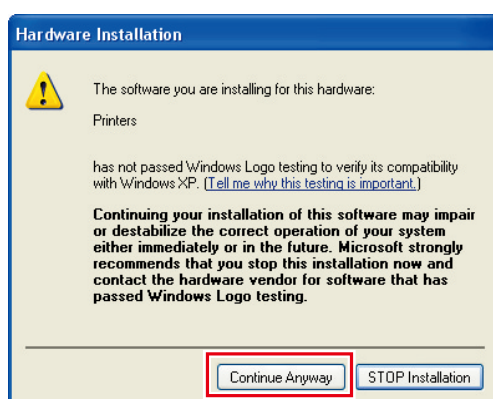


- 9B
-5 If you have a previous version of the Printer Driver installed, select the latest version of the “.inf” file, and then click **“Next”**.

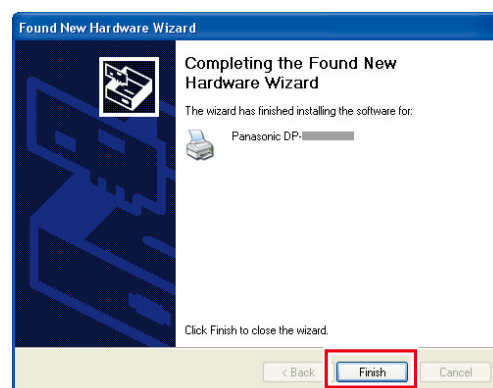


- Above screen will not be displayed when installing the Printer Driver for the first time.

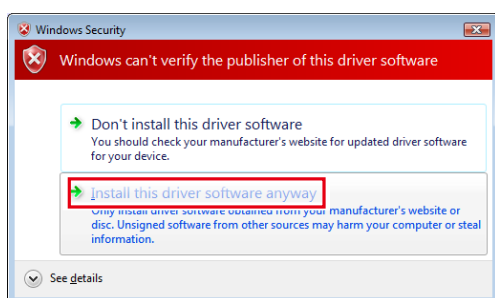
- 9B
-6 Click **“Continue Anyway”**.



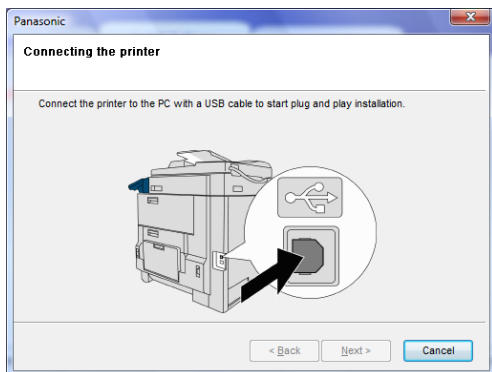
- 9B
-7 Click **“Finish”**.



9C-1 <Windows Vista / Windows Server 2008> Click “Install this driver software anyway”.

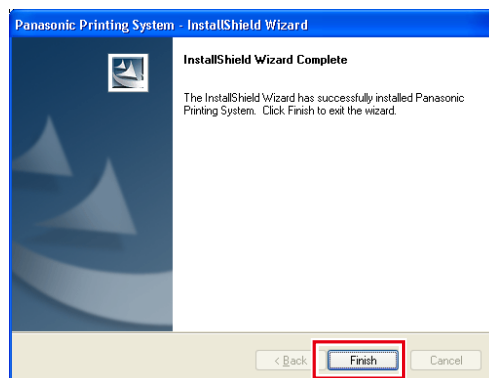


9C-2 Connect the USB cable to your machine, and then turn the Power Switch **ON**.



- Above screen will disappear automatically, if a printer is added.
- The displayed screen varies depending on the models.

10 Click “Finish”.

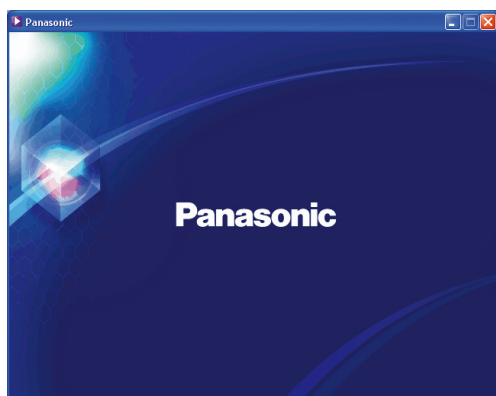


Installing the Drivers for Parallel Port Connection

ATTENTION

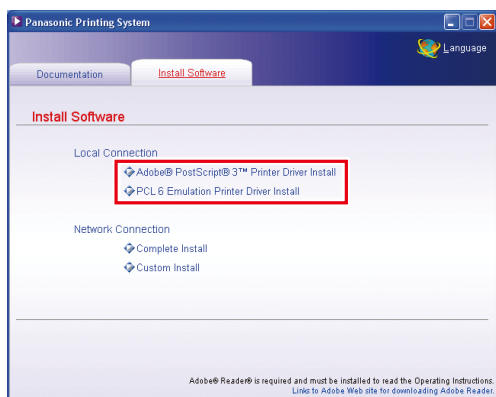
Do not connect the Parallel cable until the printer is added.

- 1 Insert the **“Panasonic Printing System”** CD-ROM.
The Panasonic opening screen is displayed.

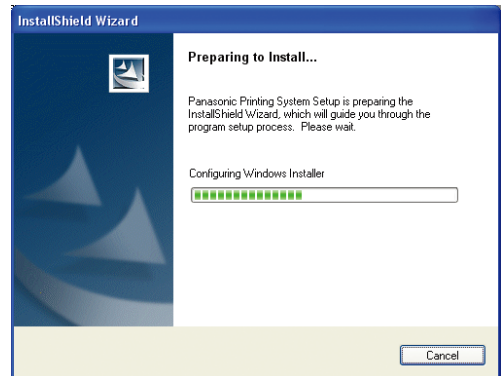


- If the CD-ROM does not launch automatically, double-click the CD-ROM icon displayed on the optical disk drive.

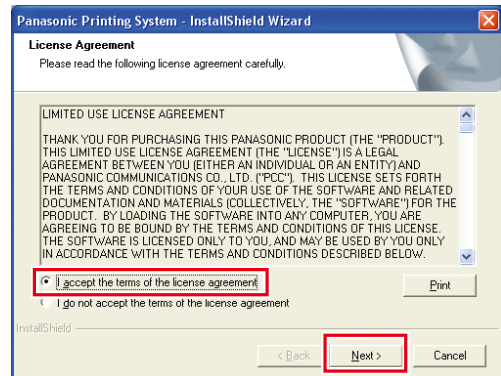
- 2 Select **“Adobe® PostScript®3™ Printer Driver Install”** or **“PCL 6 Emulation Printer Driver Install”**.



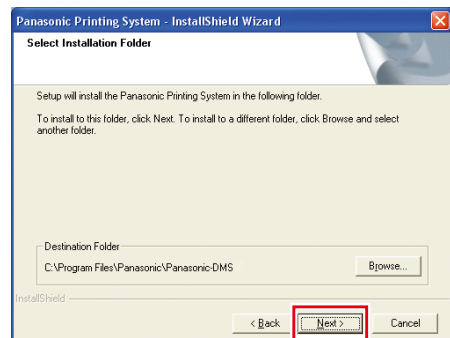
- 3 The InstallShield Wizard screen is displayed.



- 4 Check **“I accept the terms of the license agreement”**, and then click **“Next”**.



- 5 Click **“Next”**.

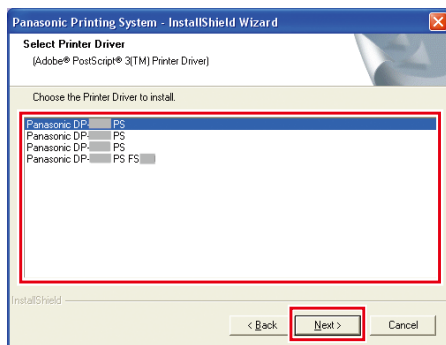


- Above Screen will not be shown when another model's **Panasonic Printing System** has been installed.
- If you wish to change the folder, click **“Browse”**, and then the desired folder to install.

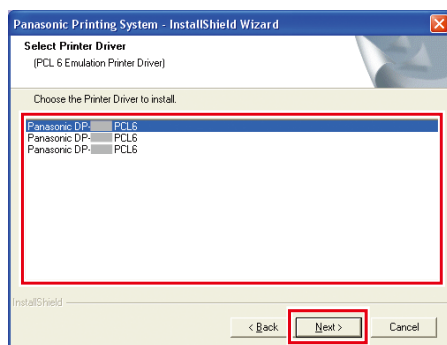
6

Select the Printer Driver that you want to install, and then click **“Next”**.

A screen changes with selected Printer Driver.



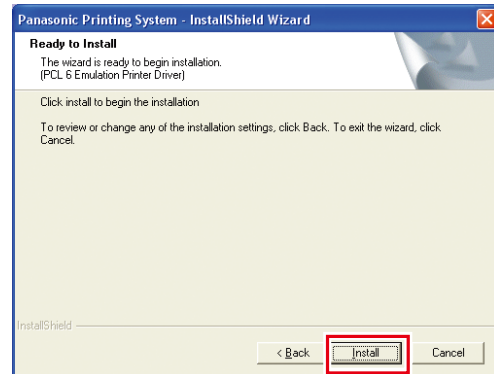
- When you select the PostScript3 Driver Install.
- Panasonic DP-xxxx PS :
(Depicts a machine without a Finisher option or with the 1-Bin Saddle-Stitch Finisher (DA-FS355), 2-Bin Saddle-Stitch Finisher (DA-FS605), or 2-Bin Finisher (DA-FS600)).
- Panasonic DP-xxxx PS FSxxx :
(Depicts a machine with the 2-Bin Finisher (DA-FS330)).



- When you select the PCL 6 Emulation Printer Driver Install.

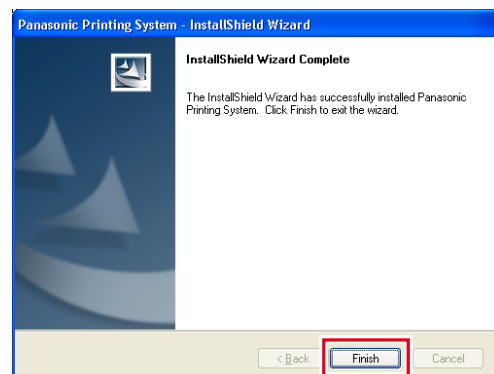
7

Click **“Install”**.



8

Click **“Finish”**.



Device Settings

- 1 Open the Printer Dialog Box using the following procedures.

Windows XP/

Windows Server 2003 :

Select **"Start"** → (**"Settings"**) → **"Printers and Faxes"**

Windows 2000 :

Select **"Start"** → **"Settings"** → **"Printers"**

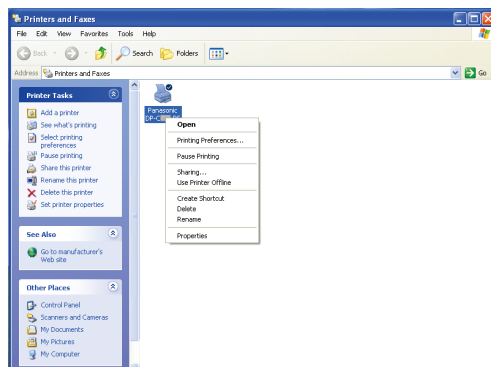
Windows Vista :

Select **"Start"** → **"Control Panel"** → **"Hardware and Sound : Printer"**

Windows Server 2008 :

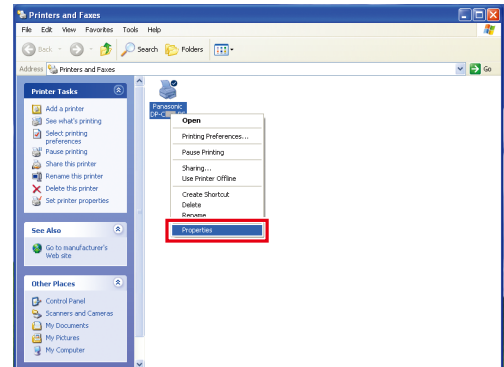
Select **"Start"** → **"Control Panel"** → **"Printers"**

- 2 Right-click the printer that you want to configure.

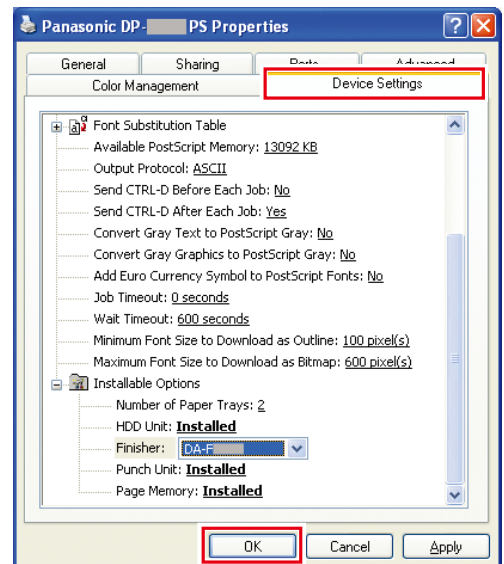


- Above screen is different according to each Windows OS.

- 3 Click **"Properties"**.



- 4 Click on the **"Device Settings"** tab, and configure the optional devices, and then click **"OK"**.



Setting Up the Shared Setting for Server PC

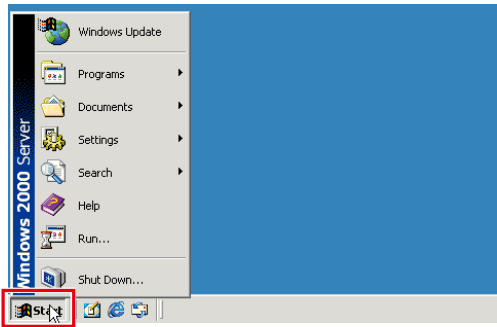
Add the Printer Driver if your client OS is different from the Network Print Server. Using the **PrnCopy.exe** before installing the Printer Driver.

- Creation procedures of the alternative Printer Driver for your client OS
 1. Open the CD-ROM of “Panasonic Printing System” with the Explorer.
 2. Open the folders “**Tools**” and “**PrnCopy**” in order.
 3. Double click the “**PrnCopy.exe**”.
 4. Press the <Y> key and <Enter> key in order on the displayed screen.

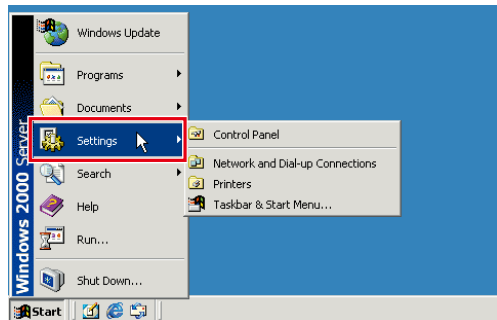
The alternative Printer Driver for your client OS will be added in a folder created on your desktop.
Please select an appropriate printer driver in the folder when you add the Printer Driver for a client OS.

Setting Up the Shared Setting for Windows 2000 Server.

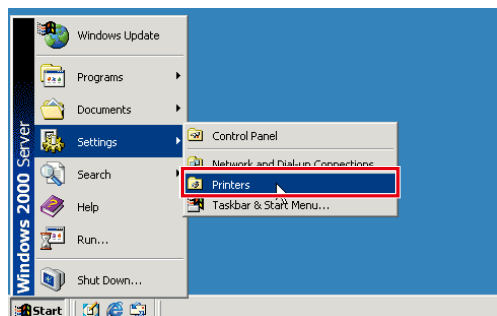
- 1 Click “**Start**”.



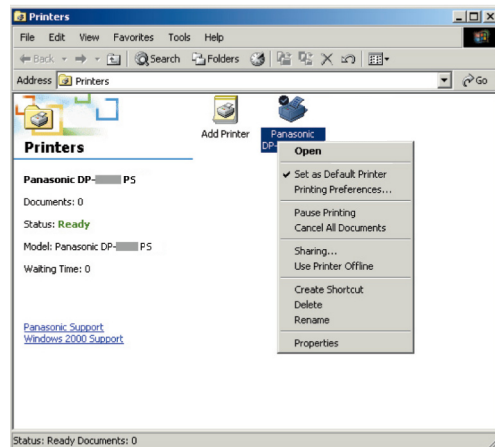
- 2 Select “**Settings**”.



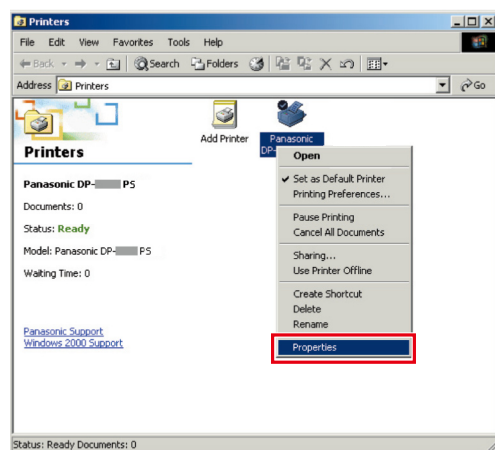
- 3 Click “**Printers**”.



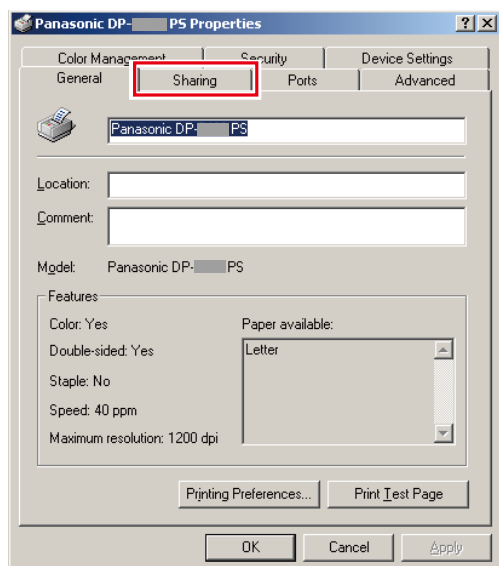
- 4 Right-Click the printer that you want to share.



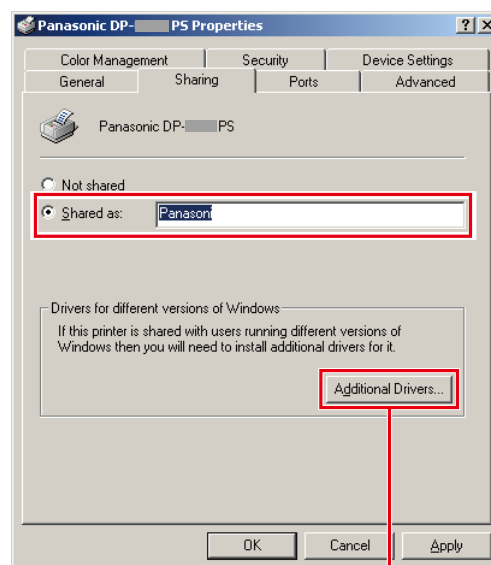
- 5 Click “**Properties**”.



6 Click on the “Sharing” tab.



7 Check “Shared as”, and then enter the Share Name. Ex: Panasonic



NOTE

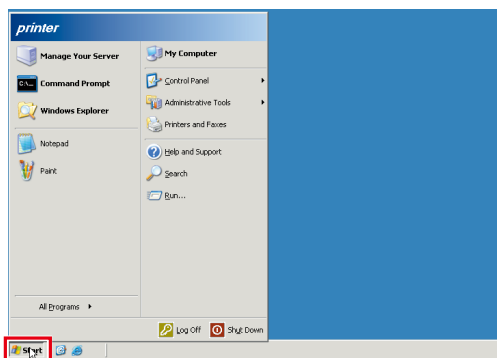
If you need to install an alternative printer driver for your client OS, click “**Additional Drivers**”.

You can manually add the printer driver by following the instructions on the screen. To easily create the printer drivers for various OS, use the **PrnCopy.exe** before the installation. (See page 27)

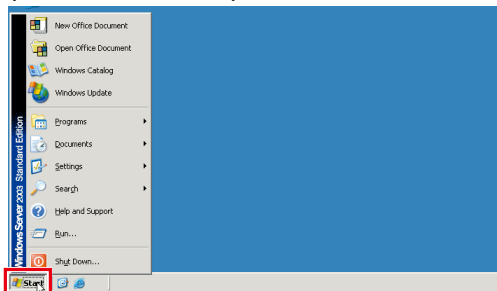
8 Click “OK” to close the screen.

Setting Up the Shared Setting for Windows Server 2003.

1 Click **"Start"**. (Category View Mode)

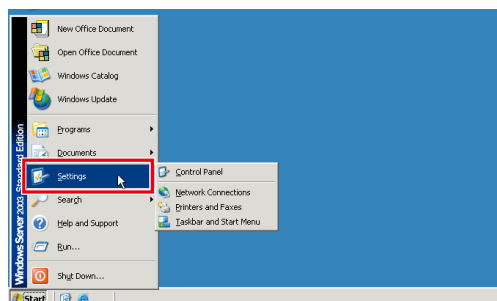


(Classic View Mode)

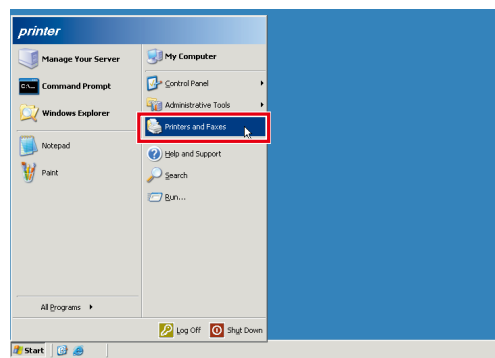


- For the procedure for the Category View Mode, proceed to step 3.

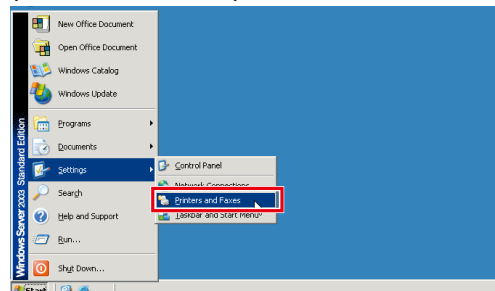
2 Select **"Settings"**. (Classic View Mode)



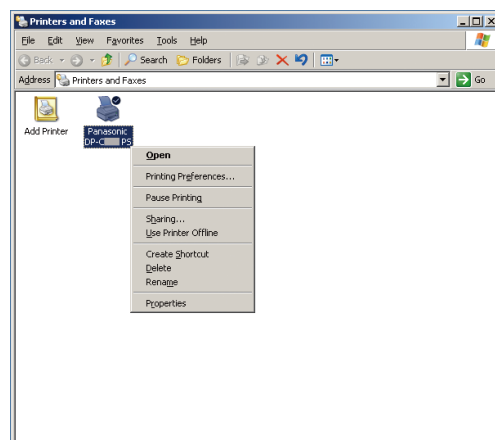
3 Click **"Printers and Faxes"**. (Category View Mode)



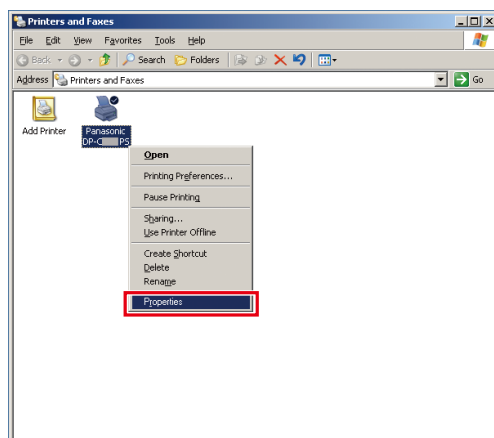
(Classic View Mode)



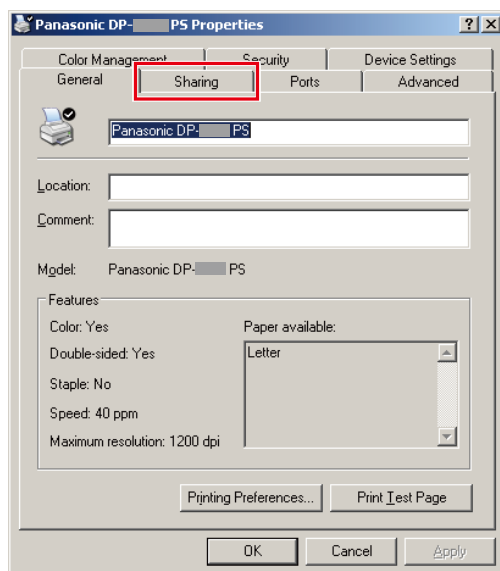
4 Right-Click the printer that you want to share.



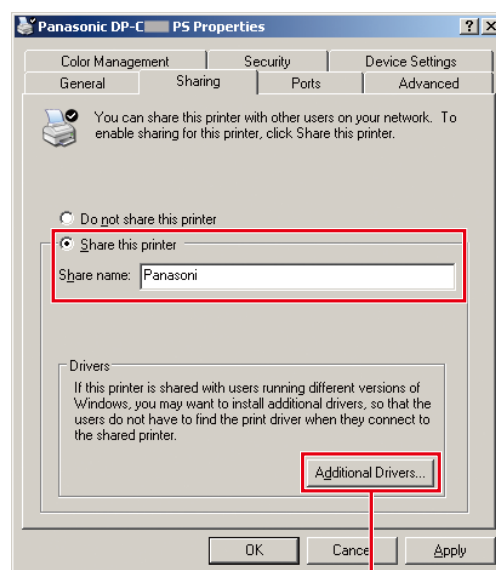
5 Click “Properties”.



6 Click on the “Sharing” tab.



7 Check “Share this printer”, and then enter the Share Name. Ex: Panasoni



NOTE

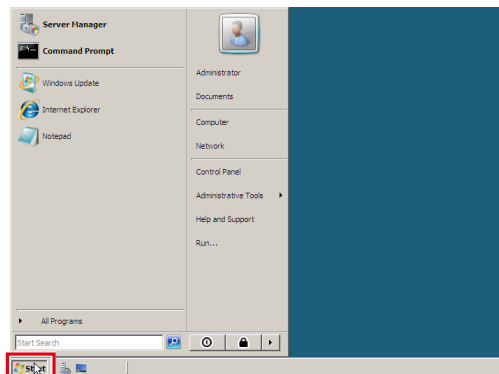
If you need to install an alternative printer driver for your client OS, click “**Additional Drivers**”.

You can manually add the printer driver by following the instructions on the screen. To easily create the printer drivers for various OS, use the **PnxCopy.exe** before the installation. (See page 27)

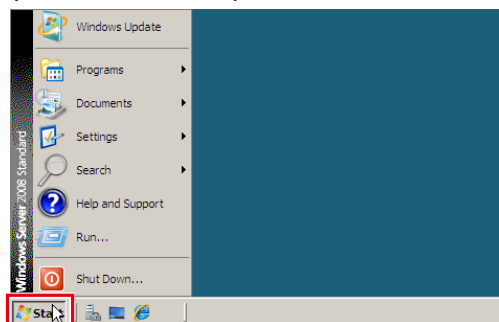
8 Click “OK” to close the screen.

Setting Up the Shared Setting for Windows Server 2008.

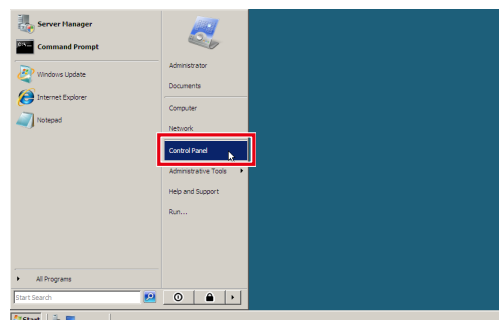
1 Click "Start". (Category View Mode)



(Classic View Mode)

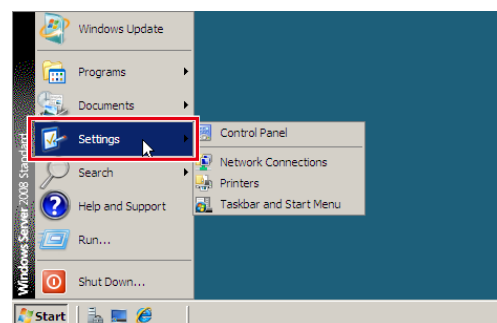


2 <For Category View Mode> Click "Control Panel".

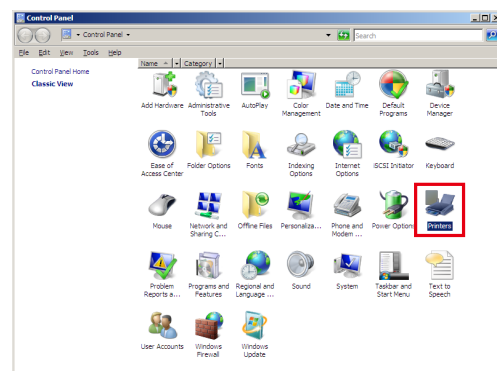


<For Classic View Mode>

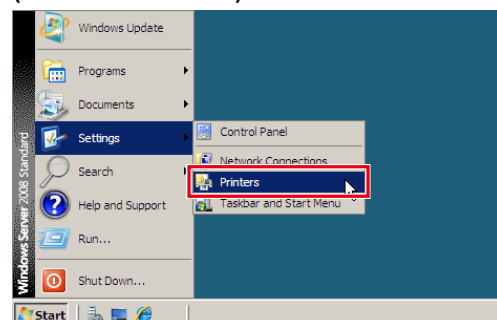
Click "Settings".



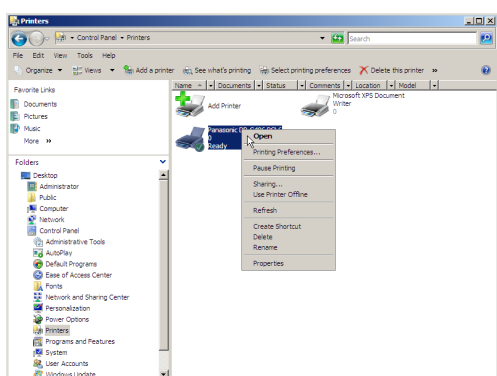
3 Double-click "Printers". (Category View Mode)



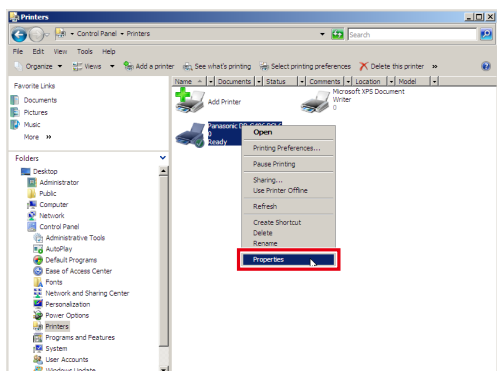
(Classic View Mode)



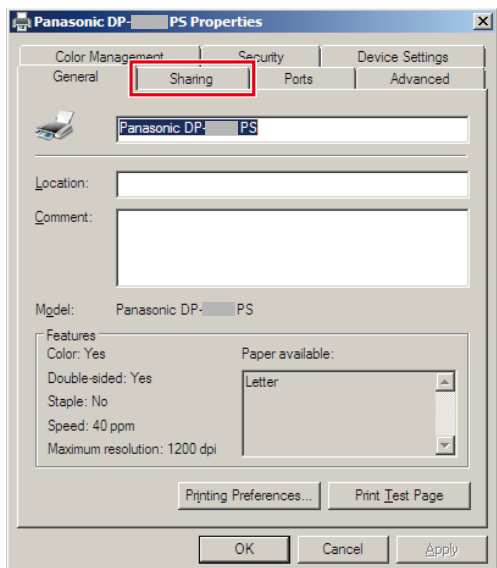
- 4 Right-click the printer that you want to share.



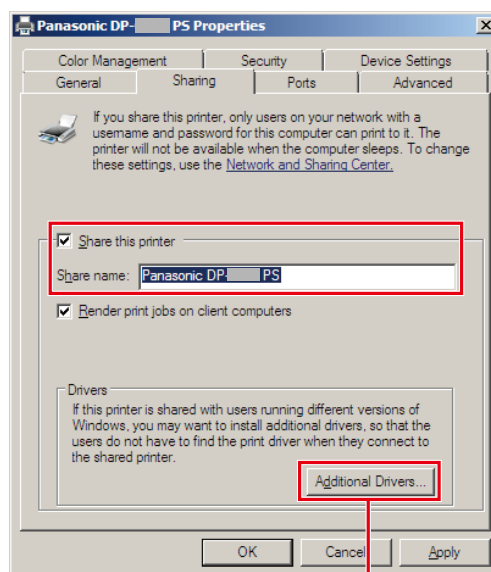
- 5 Click "Properties".



- 6 Click the "Sharing" tab.



- 7 Select "Share this printer", and then enter the Share Name.
Ex: Panasonic



NOTE

If you need to install an alternative printer driver for your client OS, click "**Additional Drivers**". You can manually add the printer driver by following the instructions on the screen. To easily create the printer drivers for various OS, use the **PrnCopy.exe** before the installation.

- 8 Click "OK" to close the screen.

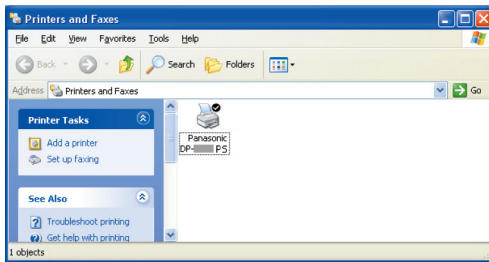
Setting Up the Client PC

Setting Up the Client PC for Windows XP and Windows 2000

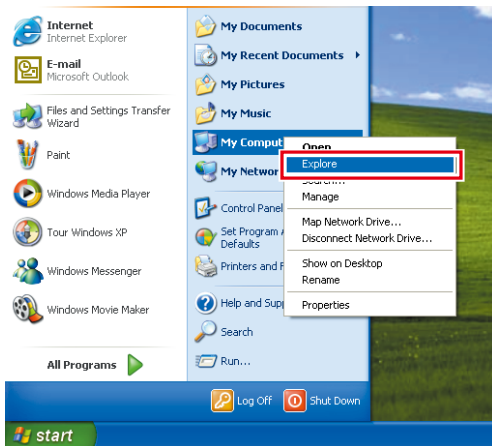
The illustrations shown for the following steps are for Windows XP.

The procedures for other Windows Operating Systems are basically the same, even though some of the details may differ.

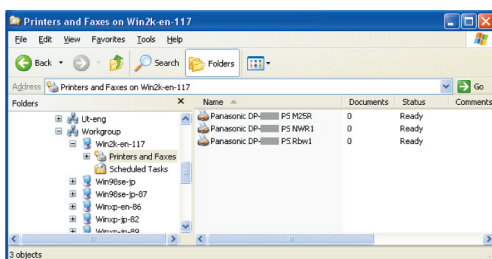
- 1 Open the **Printers and Faxes** window from a start menu.



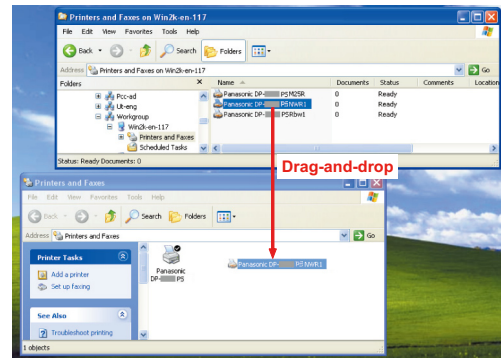
- 2 Click **"Start"**, right-click **"My Computer"**, and then select **"Explore"**.



- 3 Select the Shared Printer on your Printer Server.



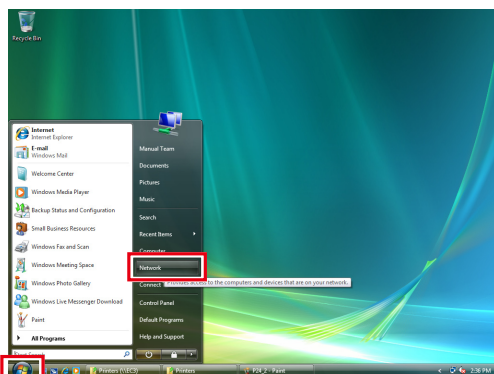
- 4 Drag-and-drop the Printer icon onto the **Printers and Faxes** window.



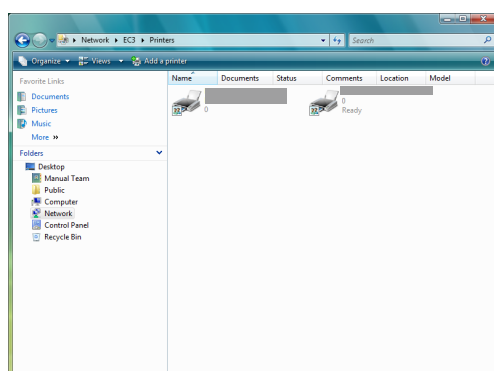
- 5 Verify that the Printer icon is copied onto the **Printers and Faxes** window.

Setting Up the Client PC for Windows Vista

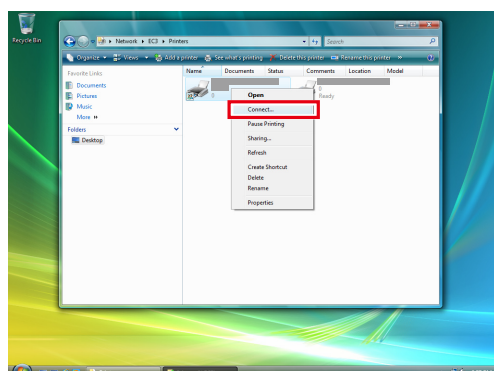
- 1 Click **"Start"**, select **Network**.



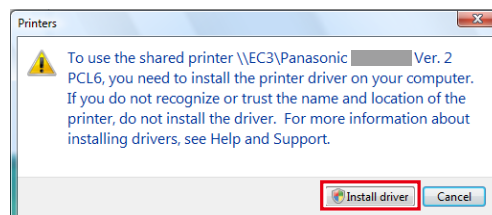
- 2 Select the Shared Printer on your Printer Server.



- 3 Right-Click the printer that you want to share.
And then select **"Connect..."**.



- 4 Click **"Install driver"**.



- 5 User Account Control appears, click **continue**.

- 6 Verify that the Printer icon is copied onto the **Printers** window.

Memo

Installation for Macintosh

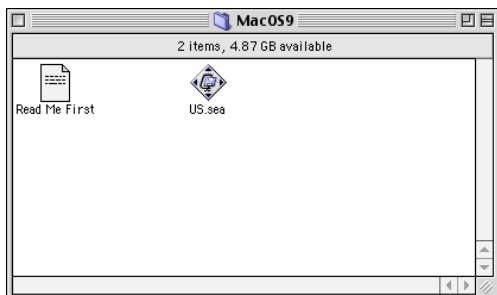
Installation for Mac OS 8.6/9.x

Installing the PS Printer Driver

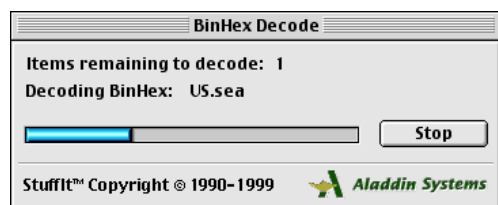
NOTE

Though each model is common to the installation in Macintosh, the procedure is different according to the version of Mac OS.

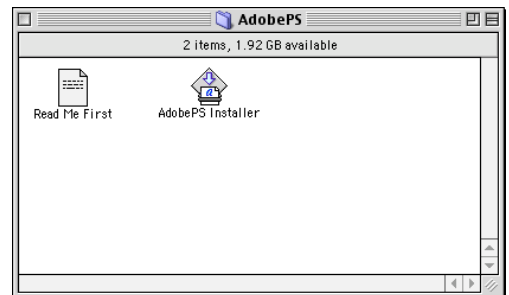
- 1 Insert the **Panasonic Printing System CD**.
- 2 Double-click the CD icon on the desktop. Open **Macintosh > English > AdobePostScriptDriver > MacOS9** folder.



- 3 Copy **US.sea.hqx** into your desktop. Then double-click the **US.sea.hqx** icon to decompress it.



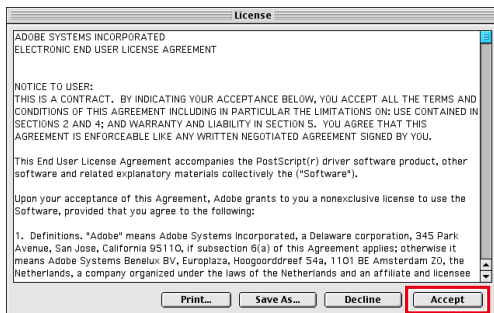
- 4 Open **US > AdobePS** folder on desktop, and then double-click the **AdobePS Installer** icon to start the setup.



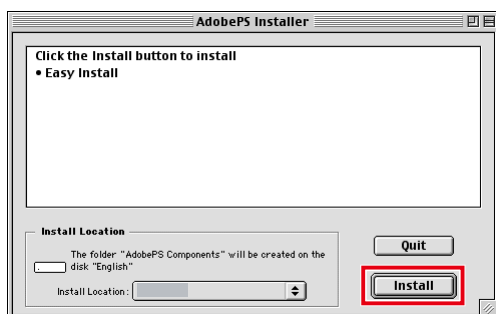
- 5 The setup screen will be displayed. Click "**Continue...**".



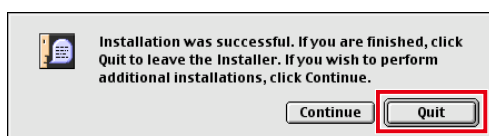
6 Click "Accept".



7 Click "Install".



8 Click "Quit".



The install process is completed.

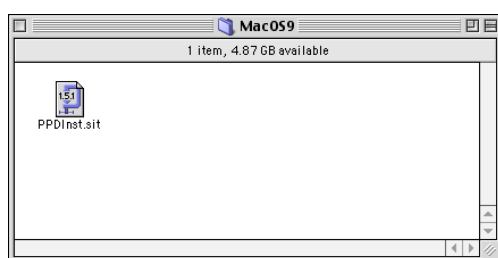
Memo:

Installing the PPD file

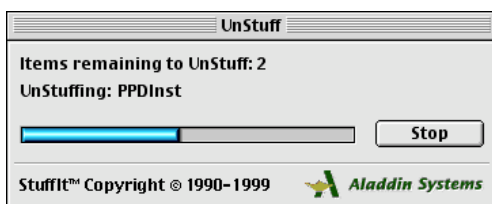
- After completing the installation of the AdobePS Printer Driver, install the PostScript printer description (PPD) file into the System Folder as follows:
- PPD file is the file that specifies the inherent functions of the printer, such as the functions of the main unit, and optional products.

1 Double-click the CD icon on the desktop.

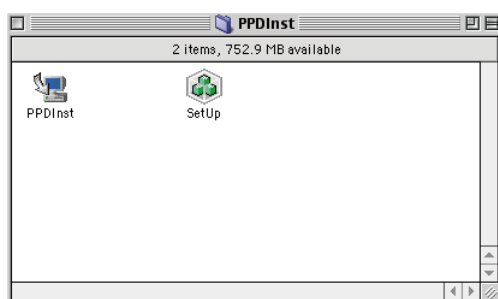
Open **Macintosh > English > Driver > MacOS9** folder.



2 Copy **PPDInst.sit** into your desktop. Then double-click the **PPDInst.sit** icon to decompress it.

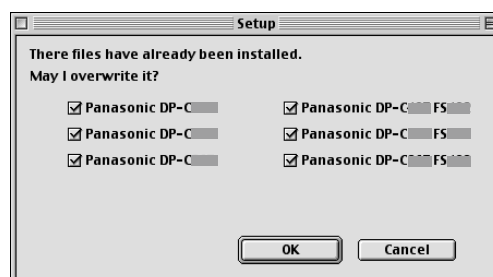


3 Open the **PPDInst** folder on desktop, then double-click the **SetUp** icon to start the setup.

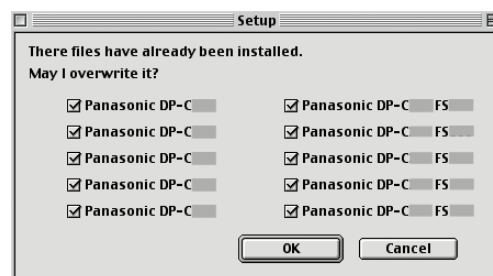


NOTE

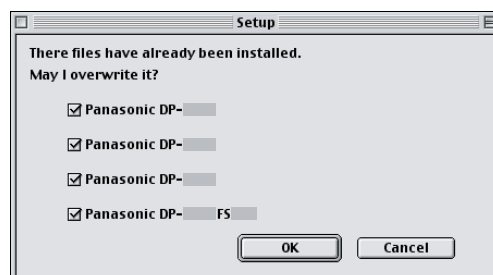
Select the desired printer and click "OK" when the PPD file has already been installed and overwriting installation is performed.
A screen changes with models.



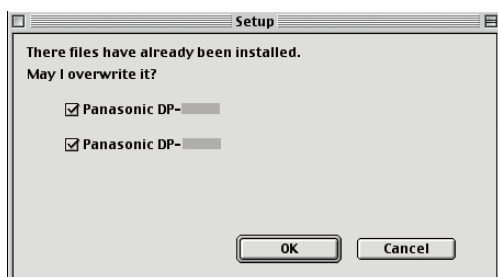
- In the case of DP-C406/C306/C266, DP-C405/C305/C265



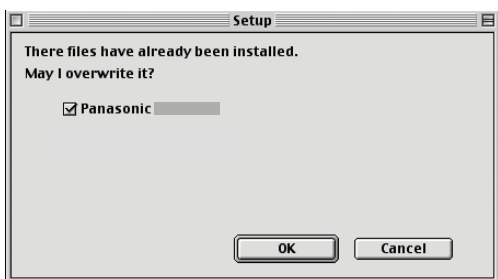
- In the case of DP-C354/C323/C264/C263/C213



- In the case of DP-8060/8045/8035



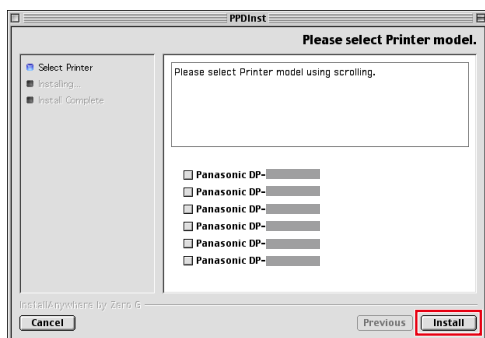
- In the case of DP-8032/8025, DP-3030/2330, and DP-8020P/8020E



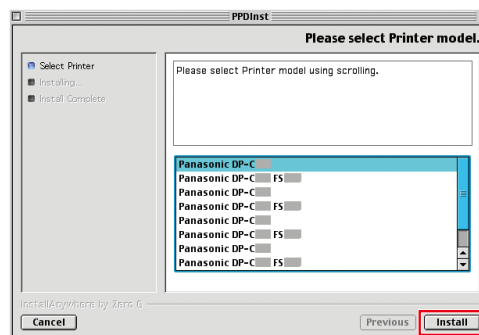
- In the case of DP-190/180, and UF-9000

4

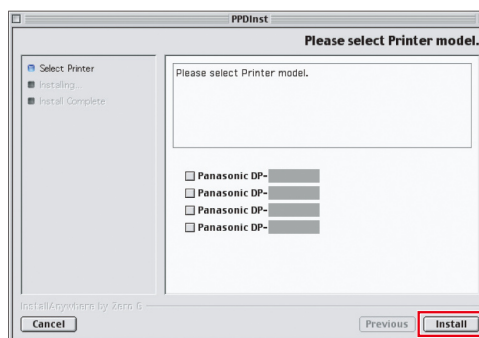
Select a printer, and then click "Install".
A screen changes with models.



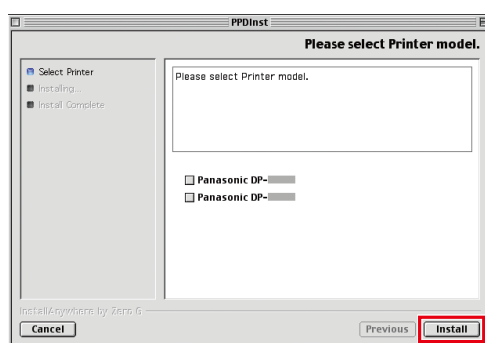
- In the case of DP-C406/C306/C266, DP-C405/C305/C265
- Panasonic DP-Cxxx :
(Depicts a machine without a Finisher option or with the 1 Bin Saddle Stitch Finisher (DA-FS405, DA-FS405W), or Outer Tray (DA-XT320, DA-XT320W)).
- Panasonic DP-Cxxx FSxxx :
(Depicts a machine with the 1 Bin Finisher (DA-FS402, DA-FS402W), or Outer Tray (DA-XT320, DA-XT320W)).



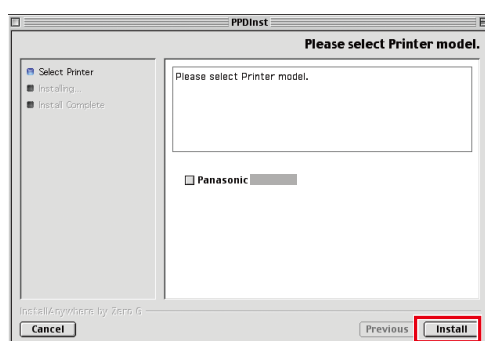
- In the case of DP-C354/C323/C264/C263/C213
- Panasonic DP-Cxxx :
(Depicts a machine without a Finisher option or with the 1 Bin Saddle Stitch Finisher (DA-FS405, DA-FS356), or Outer Tray (DA-XT320)).
- Panasonic DP-Cxxx FSxxx :
(Depicts a machine with the 1 Bin Finisher (DA-FS402, DA-FS350), or Outer Tray (DA-XT320)).



- In the case of DP-8060/8045/8035
- Panasonic DP-80xx FSxxx :
(Depicts a machine with the 2-Bin Finisher (DA-FS330)).
- Panasonic DP-80xx :
(Depicts a machine without a Finisher option or with the 1-Bin Saddle-Stitch Finisher (DA-FS355), 2-Bin Saddle-Stitch Finisher (DA-FS605), or 2-Bin Finisher (DA-FS600)).

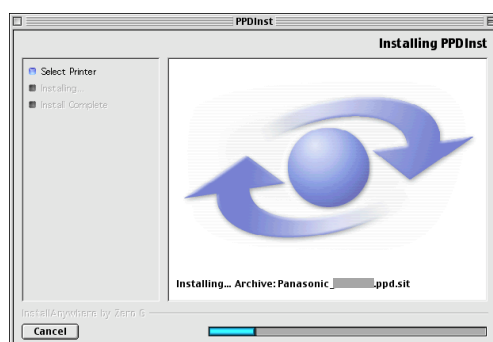


- In the case of DP-8032/8025, DP-3030/2330, and DP-8020P/8020E

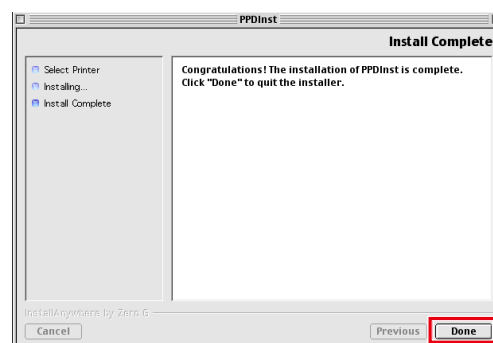


- In the case of DP-190/180, and UF-9000

5 A progress bar indicates that the PPD file is being installed.



6 Click **“Done”**.



This install process is completed.

Creating Desktop Printer

Use the Desktop Printer Utility to assign the installed AdobePS Printer Driver and PPD file to the connected printer, and create a Desktop Printer.

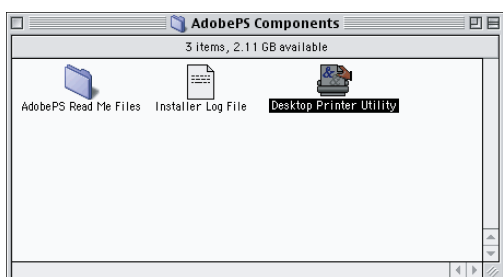
NOTE

The following describes how to perform this procedure using the Desktop Printer Utility. However, you can also assign the printer using Chooser from the Apple Menu.

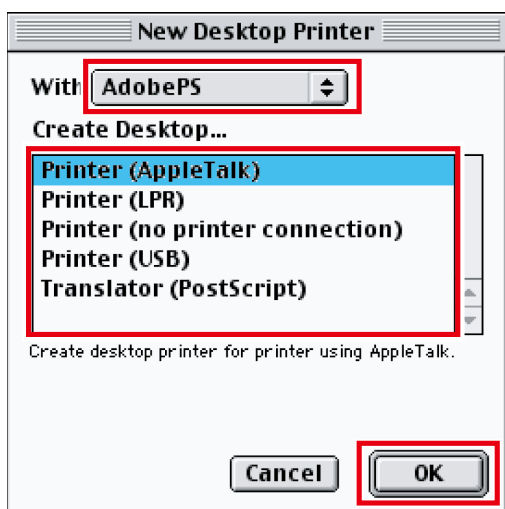
- 1 Open **AdobePS Components** folder in your Hard Disk Drive. Then double-click the **Desktop Printer Utility** icon to start the utility.

NOTE

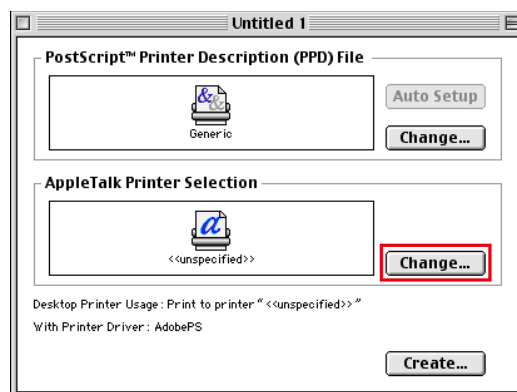
If the **Desktop Printer Utility** is not on the **Adobe PS Components**, follow the “Installing the PS Printer Driver” (See page 36).



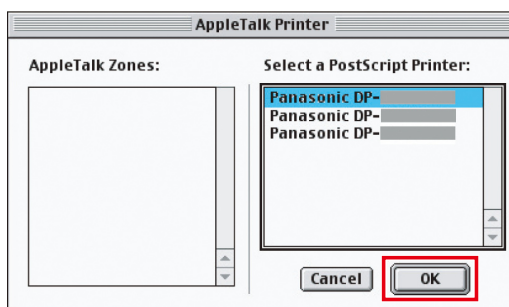
- 2 Select **AdobePS** from **With** menu and select the printer connection method on the **Create Desktop...** menu. Click **OK**.



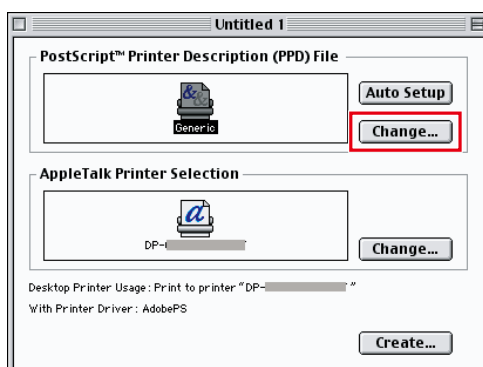
- 3 Click the **“Change...”** button on the **AppleTalk Printer Selection**.



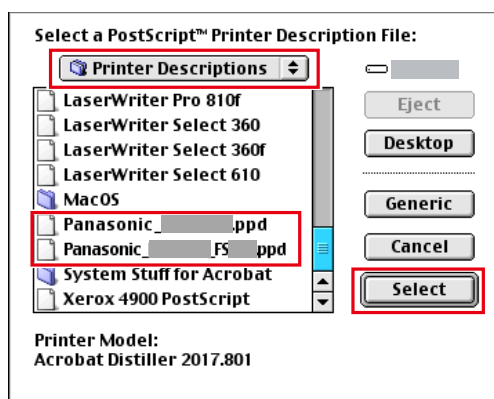
- 4 Select a printer, and click **“OK”**.



5 Click “Change...” on the **PostScript™ Printer Description (PPD) File**.



6 Select the “**Printer Descriptions**” from HDD > System Folder > Extensions. Select the appropriate PPD file for the PostScript Printer. And then click “**Select**”.



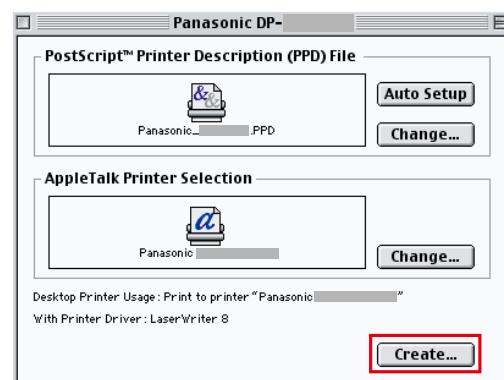
<For Panasonic Color MFP>

- Panasonic_DP-Cxxx.ppd:
(Depicts a machine without a Finisher option or with the 1 Bin Saddle Stitch Finisher (DA-FS405, DA-FS405W, DA-FS356), or Outer Tray (DA-XT320, DA-XT320W)).
- Panasonic_DP-Cxxx FSxxx.ppd:
(Depicts a machine with the 1 Bin Finisher (DA-FS402, DA-FS402W, DA-FS350), or Outer Tray (DA-XT320, DA-XT320W)).

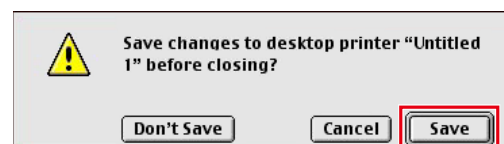
<For Panasonic Monochrome MFP>

- Panasonic_DP-xxxx FSxxx.ppd:
(Depicts a machine with the 2-Bin Finisher (DA-FS330)).
- Panasonic_DP-xxxx.ppd:
(Depicts a machine without a Finisher option or with the 1-Bin Saddle-Stitch Finisher (DA-FS355), 2-Bin Saddle-Stitch Finisher (DA-FS605), or 2-Bin Finisher (DA-FS600)).

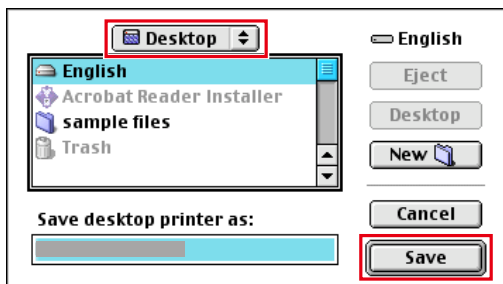
7 Click “**Create...**”.



8 Click “**Save**”.



9 Select a “Desktop” and click “Save”.



- When you want to change destination folder, select it.

10 A status bar indicates that the desktop printer is being created.



11 The utility creates a new desktop printer icon for your device.



Memo:

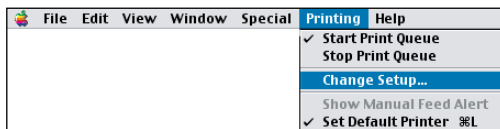
Device Settings

In the Device Setting Dialog box, it can be set the optional device settings in detail.

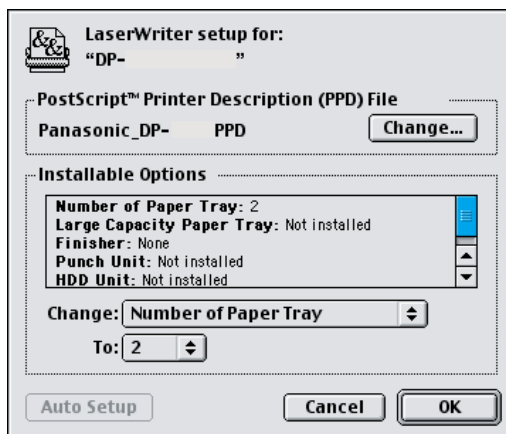
- 1 Select the desired printer icon.



- 2 Select a "Printing" from toolbar, and click the "Change Setup..."

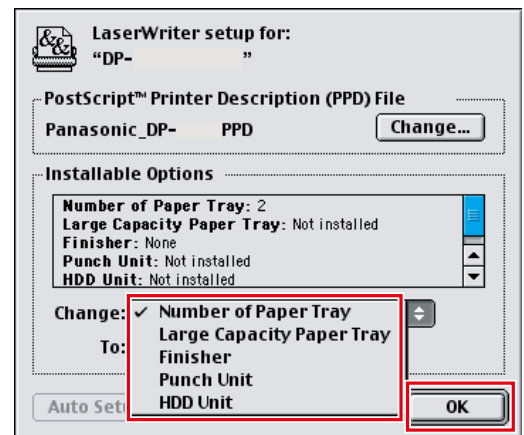


Open the Setup dialog.



- The displayed screen varies depending on the models.

- 3 Click the up/down spin control of "Change:", and set the install option. And then click "OK".



Installation for Mac OS X

- A PostScript printer driver is already provided in Mac OS X. You need to install the PostScript printer description (PPD) file, and add the printer into your system for printing.
- PPD file is the file that specifies the inherent functions of the printer, such as the functions of the main unit, and optional products.

NOTE

In order to utilize the mailbox function of the Panasonic printer, change the settings using the PS Driver Security Utility after installing the PPD file. And then, add the Panasonic printer to the printer list. For more details, refer to “Installing the PS Driver Security Utility for Macintosh” (See page 70).

For Mac OS X, follow the procedures below when installing the PS Driver Security Utility.

1. Install the PPD file.
 2. Change the settings using the PS Driver Security Utility.
 3. Add the PS printer driver.
- The driver is required to be deleted if it has already been installed.

Installing the PS Printer Description (PPD) File

1 Insert the **Panasonic Printing System CD**.

2 Double-click the CD icon on the desktop.

For Mac OS X 10.1

Open **Macintosh > English > Driver > MacOSX101** folder.

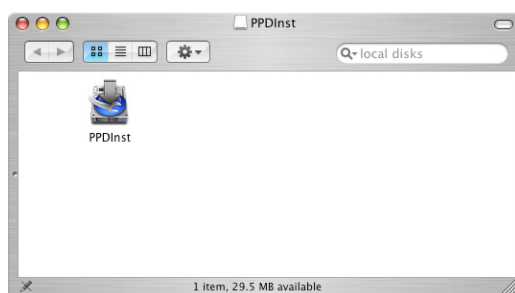
For Mac OS X 10.2 later

Open **Macintosh > English > Driver > MacOSX102-later** folder.

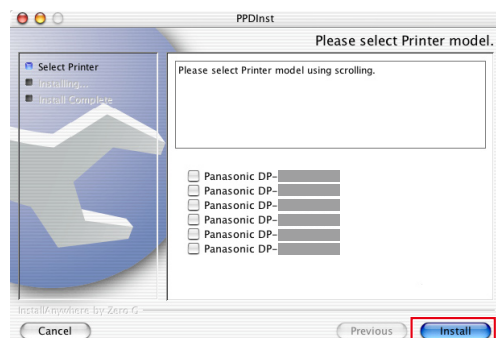


3 Copy **PPDInst.dmg.zip (PPDInst.dmg.sit** for Mac OS X 10.1) into your desktop. Then double-click the **PPDInst.dmg.zip (PPDInst.dmg.sit** for Mac OS X 10.1) icon to decompress it.

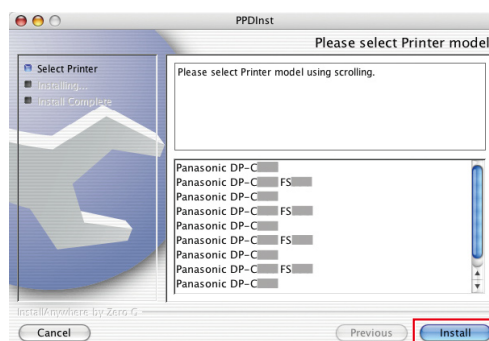
4 Double-click the **PPDInst.dmg** or **PPDInst** icon to start the setup.



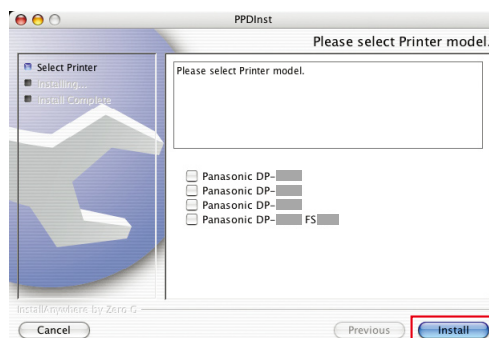
5 Select a printer, and click **"Install"**. A screen changes with models.



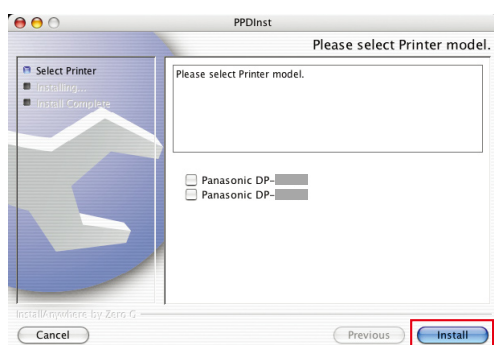
- In the case of DP-C406/C306/C266, DP-C405/C305/C265
- Panasonic DP-Cxxx :
(Depicts a machine without a Finisher option or with the 1 Bin Saddle Stitch Finisher (DA-FS405, DA-FS405W), or Outer Tray (DA-XT320, DA-XT320W)).
- Panasonic DP-Cxxx FSxxx :
(Depicts a machine with the 1 Bin Finisher (DA-FS402, DA-FS402W), or Outer Tray (DA-XT320, DA-XT320W)).



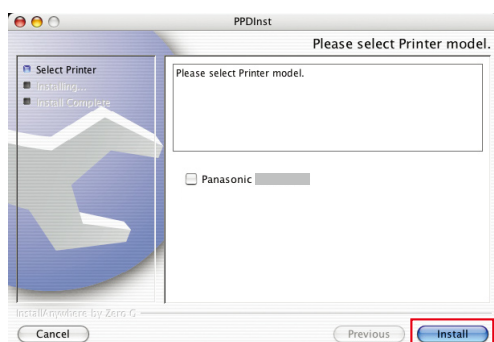
- In the case of DP-C354/C323/C264/C263/C213
- Panasonic DP-Cxxx :
(Depicts a machine without a Finisher option or with the 1 Bin Saddle Stitch Finisher (DA-FS405, DA-FS356), or Outer Tray (DA-XT320)).
- Panasonic DP-Cxxx FSxxx :
(Depicts a machine with the 1 Bin Finisher (DA-FS402, DA-FS350), or Outer Tray (DA-XT320)).



- In the case of DP-8060/8045/8035
- Panasonic DP-80xx FSxxx :
(Depicts a machine with the 2-Bin Finisher (DA-FS330)).
- Panasonic DP-80xx :
(Depicts a machine without a Finisher option or with the 1-Bin Saddle-Stitch Finisher (DA-FS355), 2-Bin Saddle-Stitch Finisher (DA-FS605), or 2-Bin Finisher (DA-FS600)).

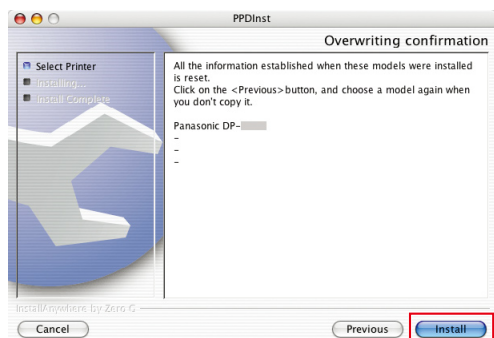


- In the case of DP-8032/8025, DP-3030/2330, and DP-8020P/8020E



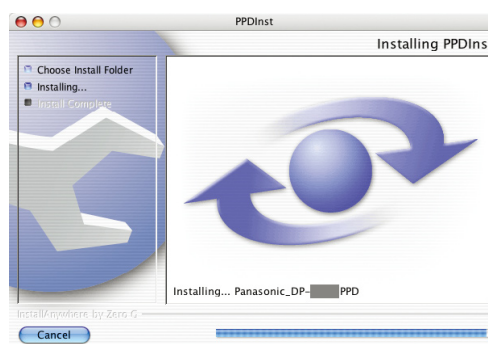
- In the case of DP-190/180, and UF-9000

6 Verify the printer model to be installed and click **"Install"**.

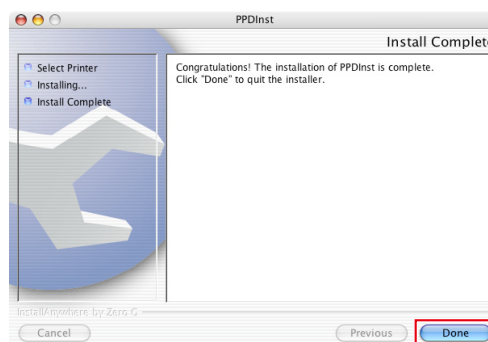


- When other PPD file has already been installed, this screen is displayed.

7 A progress bar indicates that the PPD file is being installed.

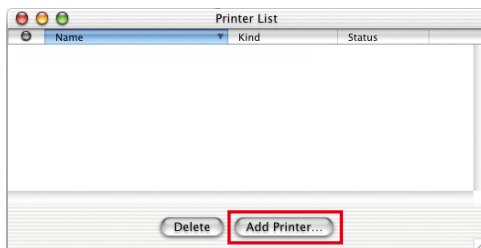


8 Click **"Done"**.



Add the printer in the Printer List (For Mac OS X 10.1)

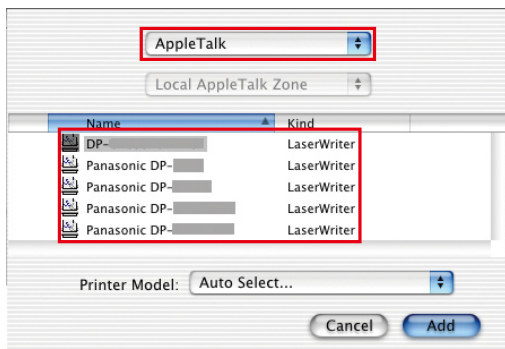
- 1 Open **Print Center** from **HDD > Applications > Utilities** and select **[Add Printer...]** on **[Printer List]**.



- The next screen is displayed when adding a printer for the first time. Click **"Add..."**.

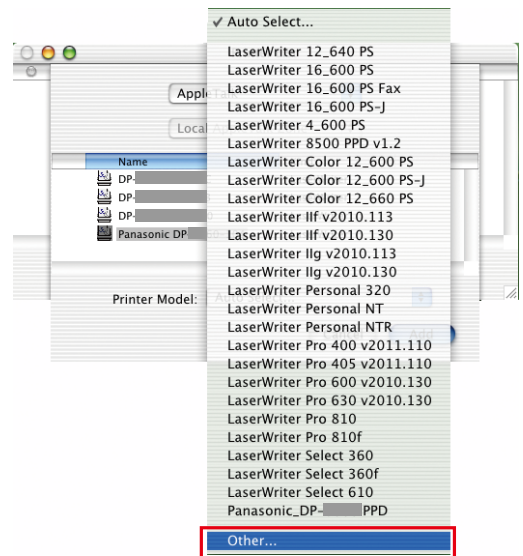


- 2 Select the printer connection method on the top menu. The list of the connected printer is displayed. Select the appropriate printer from **Name**.



- The Panasonic printer is compatible with AppleTalk. Selecting LPR connection is available, however, the operation is not guaranteed.

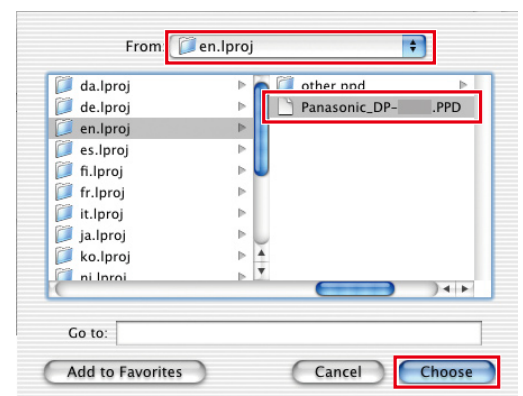
- 3 Select **[Other...]** from **Printer Model** pull down menu.



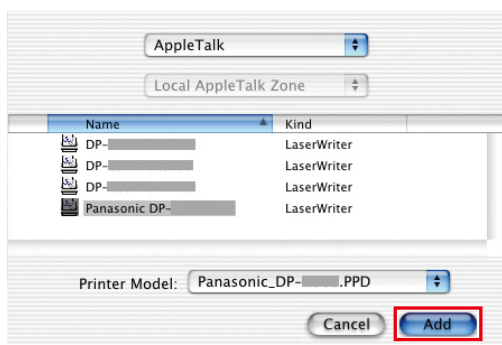
NOTE

In order to choose a printer driver correctly, we recommend you to select from **"Other..."**.

- 4 Select the corresponding driver from **HDD > Library > Printers > PPDs > Contents > Resources > en.lproj** and click **"Choose"**.



5 A status bar indicates that the printer is being created. Click **Add**.



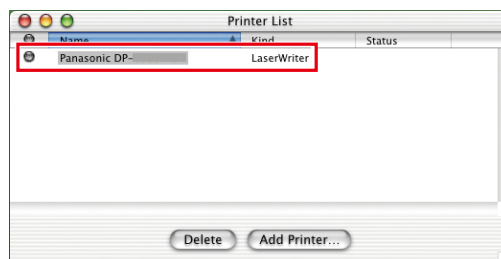
<For Panasonic Color MFP>

- Panasonic_DP-Cxxx.ppd:
(Depicts a machine without a Finisher option or with the 1 Bin Saddle Stitch Finisher (DA-FS405, DA-FS405W, DA-FS356), or Outer Tray (DA-XT320, DA-XT320W)).
- Panasonic_DP-Cxxx FSxxx.ppd:
(Depicts a machine with the 1 Bin Finisher (DA-FS402, DA-FS402W, DA-FS350), or Outer Tray (DA-XT320, DA-XT320W)).

<For Panasonic Monochrome MFP>

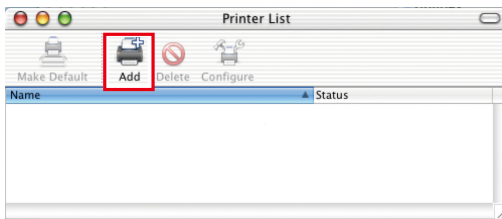
- Panasonic_DP-xxxx FSxxx.ppd:
(Depicts a machine with the 2-Bin Finisher (DA-FS330)).
- Panasonic_DP-xxxx.ppd:
(Depicts a machine without a Finisher option or with the 1-Bin Saddle-Stitch Finisher (DA-FS355), 2-Bin Saddle-Stitch Finisher (DA-FS605), or 2-Bin Finisher (DA-FS600)).

6 The printer is added in the **Printer List**.

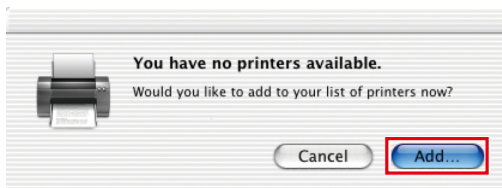


Add the printer in the Printer List (For Mac OS X 10.2)

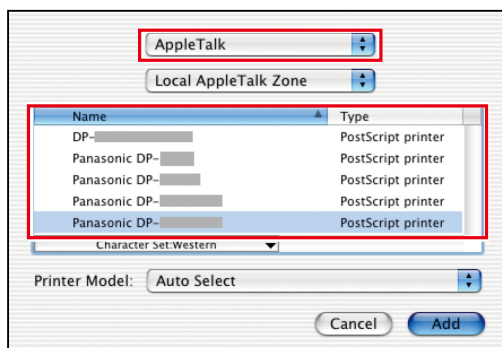
- 1 Open **Print Center** from **HDD > Applications > Utilities** and select **[Add]** on **[Printer List]**.



- The next screen is displayed when adding a printer for the first time. Click **"Add..."**.

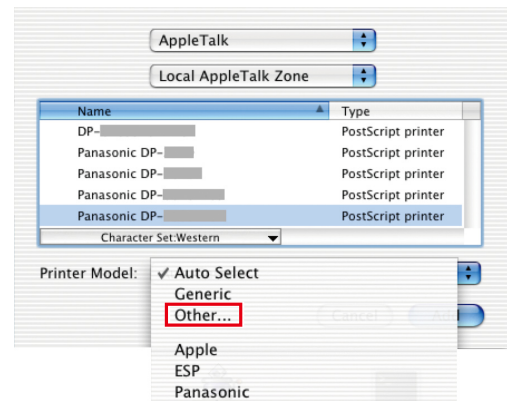


- 2 Select the printer connection method on the top menu. The list of the connected printer is displayed. Select the appropriate printer from **Name**.



- The Panasonic printer is compatible with AppleTalk. Selecting LPR connection is available, however, the operation is not guaranteed.

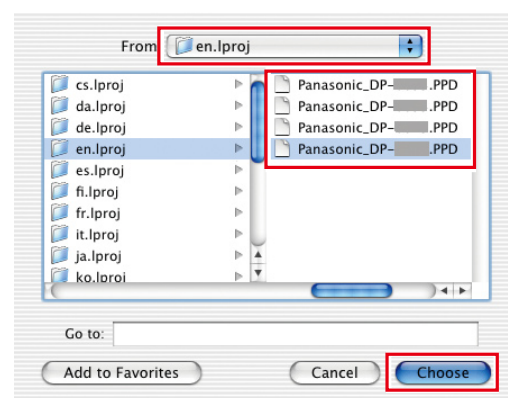
- 3 Select **[Other...]** from **Printer Model** pull down menu.



NOTE

In order to choose a printer driver correctly, we recommend you to select from **"Other..."**.

- 4 Select the corresponding driver from **HDD > Library > Printers > PPDs > Contents > Resources > en.lproj** and click **"Choose"**.



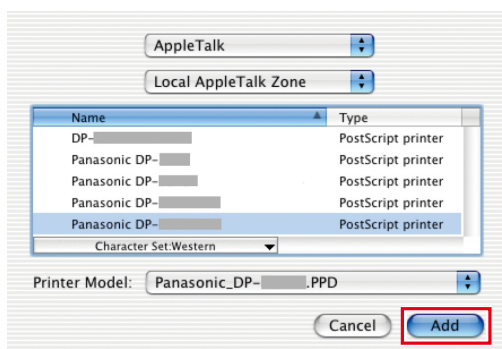
<For Panasonic Color MFP>

- Panasonic_DP-Cxxx.ppd:
(Depicts a machine without a Finisher option or with the 1 Bin Saddle Stitch Finisher (DA-FS405, DA-FS405W, DA-FS356), or Outer Tray (DA-XT320, DA-XT320W)).
- Panasonic_DP-Cxxx FSxxx.ppd:
(Depicts a machine with the 1 Bin Finisher (DA-FS402, DA-FS402W, DA-FS350), or Outer Tray (DA-XT320, DA-XT320W)).

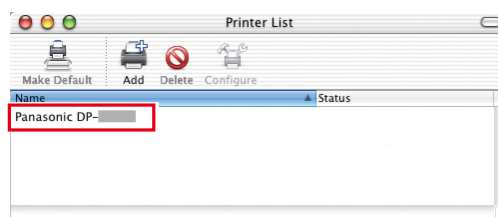
<For Panasonic Monochrome MFP>

- Panasonic_DP-xxxx FSxxx.ppd:
(Depicts a machine with the 2-Bin Finisher (DA-FS330)).
- Panasonic_DP-xxxx.ppd:
(Depicts a machine without a Finisher option or with the 1-Bin Saddle-Stitch Finisher (DA-FS355), 2-Bin Saddle-Stitch Finisher (DA-FS605), or 2-Bin Finisher (DA-FS600)).

5 A status bar indicates that the printer is being created. Click **Add**.

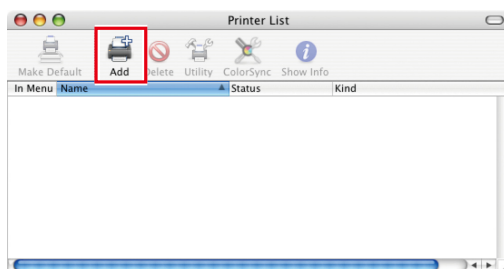


6 The printer is added in the **Printer List**.

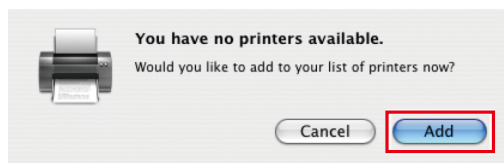


Add the printer in the Printer List (For Mac OS X 10.3)

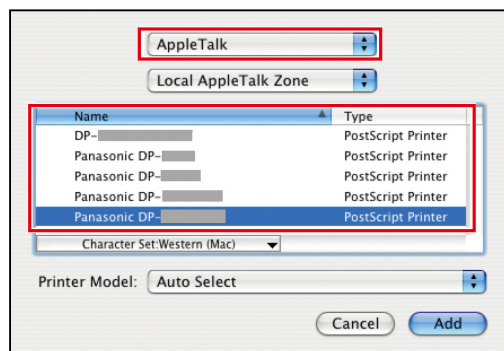
- 1 Open **Printer Setup Utility** from **HDD > Applications > Utilities** and select **[Add]** on **[Printer List]**.



- The next screen is displayed when adding a printer for the first time. Click **"Add"**.

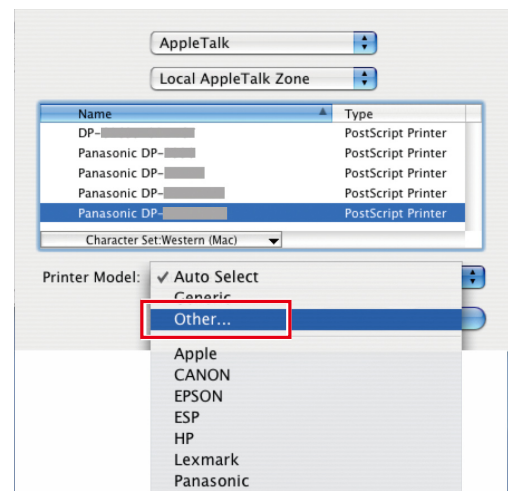


- 2 Select the printer connection method on the top menu. The list of the connected printer is displayed. Select the appropriate printer from **Name**.



- The Panasonic printer is compatible with AppleTalk. Selecting LPR connection is available, however, the operation is not guaranteed.

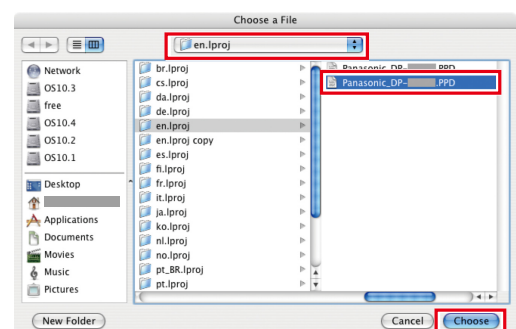
- 3 Select **[Other...]** from **Printer Model** pull down menu.



NOTE

In order to choose a printer driver correctly, we recommend you to select from **"Other..."**.

- 4 Select the corresponding driver from **HDD > Library > Printers > PPDs > Contents > Resources > en.lproj** and click **"Choose"**.



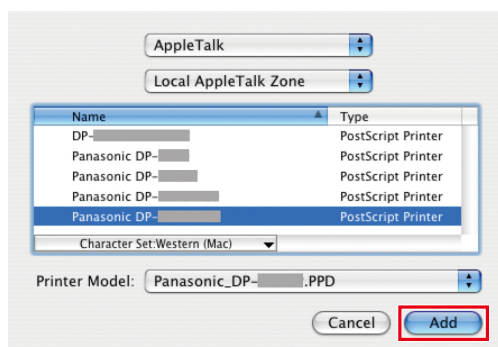
<For Panasonic Color MFP>

- Panasonic_DP-Cxxx.ppd:
(Depicts a machine without a Finisher option or with the 1 Bin Saddle Stitch Finisher (DA-FS405, DA-FS405W, DA-FS356), or Outer Tray (DA-XT320, DA-XT320W)).
- Panasonic_DP-Cxxx FSxxx.ppd:
(Depicts a machine with the 1 Bin Finisher (DA-FS402, DA-FS402W, DA-FS350), or Outer Tray (DA-XT320, DA-XT320W)).

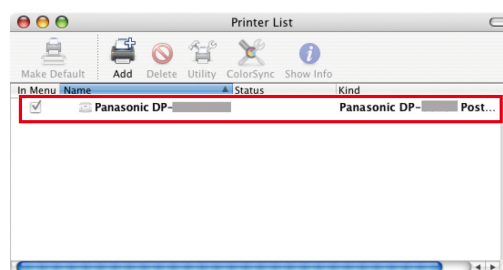
<For Panasonic Monochrome MFP>

- Panasonic_DP-xxxx FSxxx.ppd:
(Depicts a machine with the 2-Bin Finisher (DA-FS330)).
- Panasonic_DP-xxxx.ppd:
(Depicts a machine without a Finisher option or with the 1-Bin Saddle-Stitch Finisher (DA-FS355), 2-Bin Saddle-Stitch Finisher (DA-FS605), or 2-Bin Finisher (DA-FS600)).

5 A status bar indicates that the printer is being created. Click **Add**.



6 The printer is added in the **Printer List**.

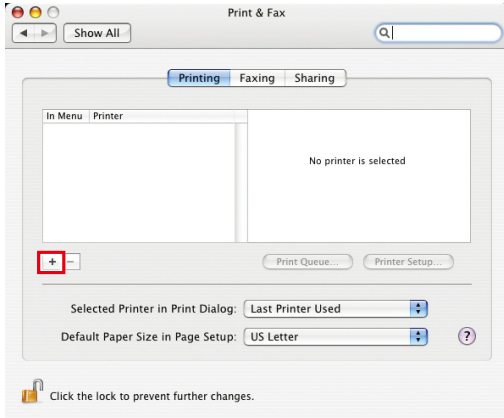


Add the printer in the Printer List (For Mac OS X 10.4)

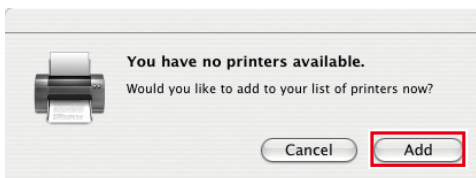
- 1 Open “**System Preferences**”, and click “**Print & Fax**”.



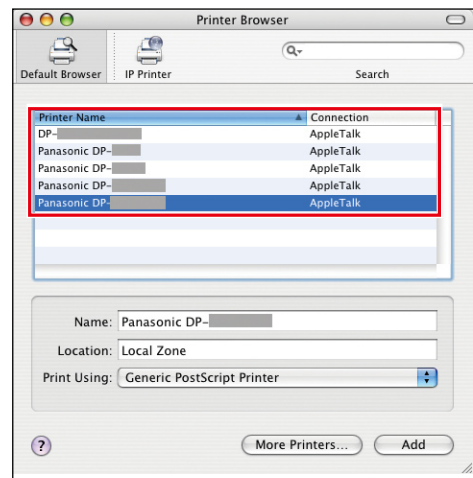
- 2 Select [+].



- The next screen is displayed when adding a printer for the first time. Click “**Add**”.

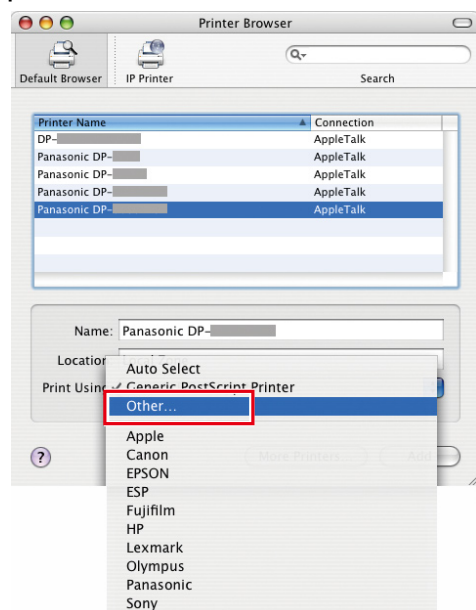


- 3 The list of the connected printer is displayed. Select the appropriate printer from **Printer Name**.



- The Panasonic printer is compatible with AppleTalk.
- If a connected printer does not appear in the Printer Browser window, please click the [More Printers...] button to add Printers.

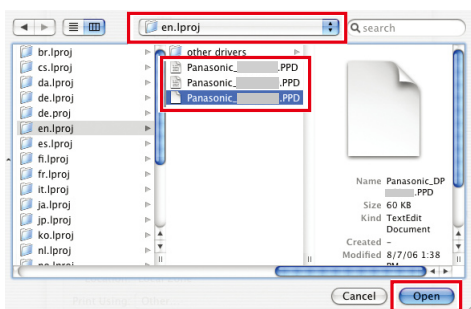
- 4 Select [Other] from **Print Using** pull down menu.



NOTE

In order to choose a printer driver correctly, we recommend you to select from “**Other**”.

- 5 Select the corresponding driver from **HDD > Library > Printers > PPDs > Contents > Resources > en.lproj** and click “Open”.



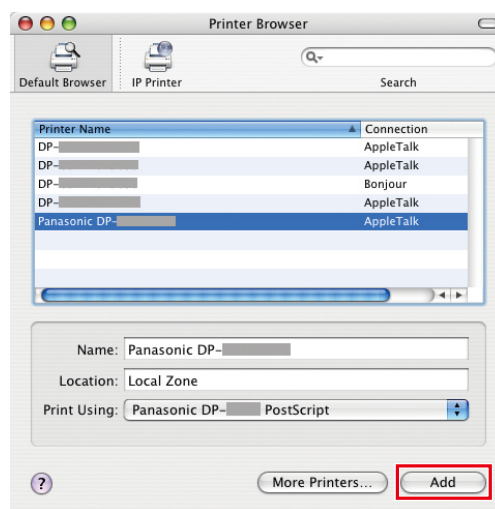
<For Panasonic Color MFP>

- Panasonic_DP-Cxxx.ppd:
(Depicts a machine without a Finisher option or with the 1 Bin Saddle Stitch Finisher (DA-FS405, DA-FS405W, DA-FS356), or Outer Tray (DA-XT320, DA-XT320W)).
- Panasonic_DP-Cxxx FSxxx.ppd:
(Depicts a machine with the 1 Bin Finisher (DA-FS402, DA-FS402W, DA-FS350), or Outer Tray (DA-XT320, DA-XT320W)).

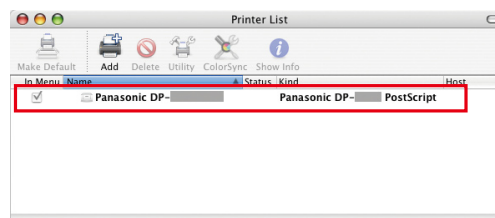
<For Panasonic Monochrome MFP>

- Panasonic_DP-xxxx FSxxx.ppd:
(Depicts a machine with the 2-Bin Finisher (DA-FS330)).
- Panasonic_DP-xxxx.ppd:
(Depicts a machine without a Finisher option or with the 1-Bin Saddle-Stitch Finisher (DA-FS355), 2-Bin Saddle-Stitch Finisher (DA-FS605), or 2-Bin Finisher (DA-FS600)).

- 6 A status bar indicates that the printer is being created. Click “Add”.

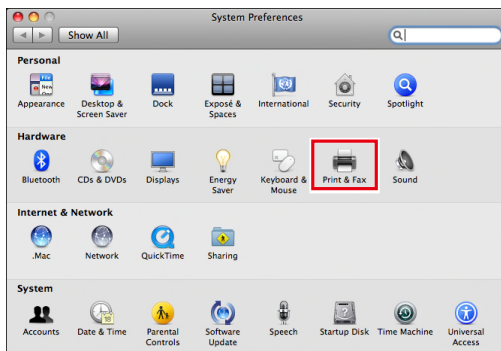


- 7 The printer is added in the **Printer List**.

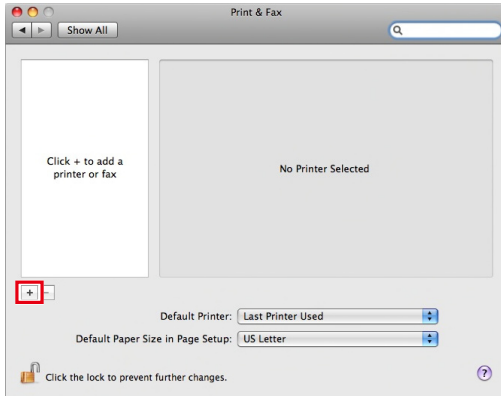


Add the printer in the Printer List (For Mac OS X 10.5)

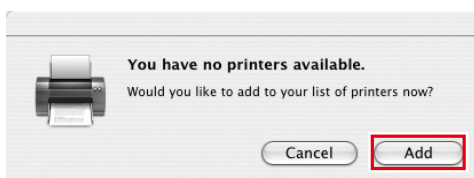
- 1 Open “**System Preferences**”, and click “**Print & Fax**”.



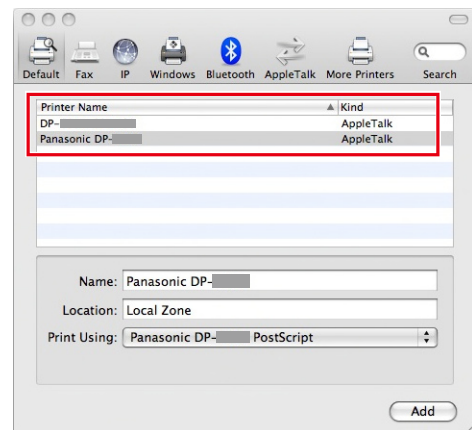
- 2 Select [+].



- The next screen is displayed when adding a printer for the first time. Click “**Add**”.

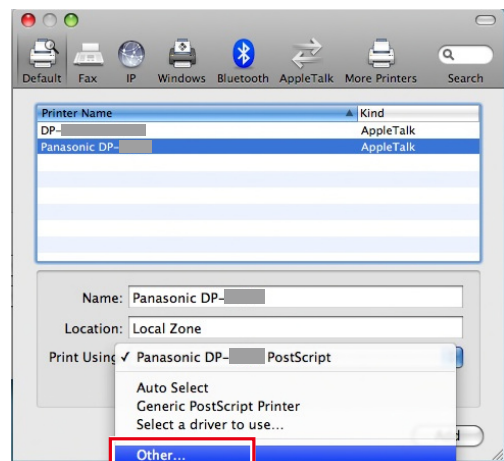


- 3 The list of the connected printer is displayed. Select the appropriate printer from **Printer Name**.



- The Panasonic printer is compatible with AppleTalk.

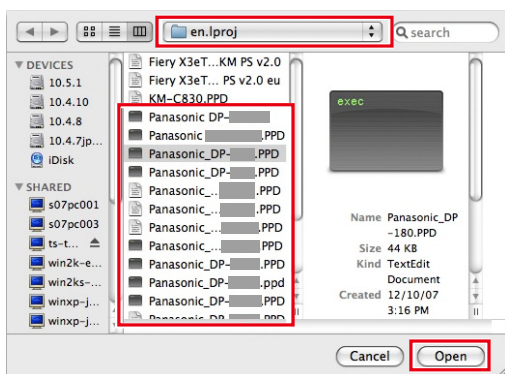
- 4 Select [**Other...**] from **Print Using** pull down menu.



NOTE

In order to choose a printer driver correctly, we recommend you to select from “**Other...**”.

- 5 Select the corresponding driver from **HDD > Library > Printers > PPDs > Contents > Resources > en.lproj** and click “Open”.



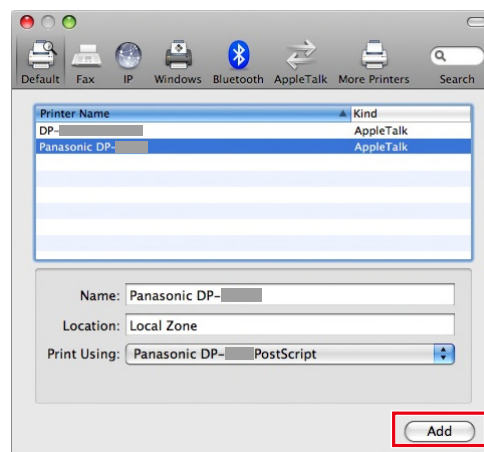
<For Panasonic Color MFP>

- Panasonic_DP-Cxxx.ppd:
(Depicts a machine without a Finisher option or with the 1 Bin Saddle Stitch Finisher (DA-FS405, DA-FS405W, DA-FS356), or Outer Tray (DA-XT320, DA-XT320W)).
- Panasonic_DP-Cxxx FSxxx.ppd:
(Depicts a machine with the 1 Bin Finisher (DA-FS402, DA-FS402W, DA-FS350), or Outer Tray (DA-XT320, DA-XT320W)).

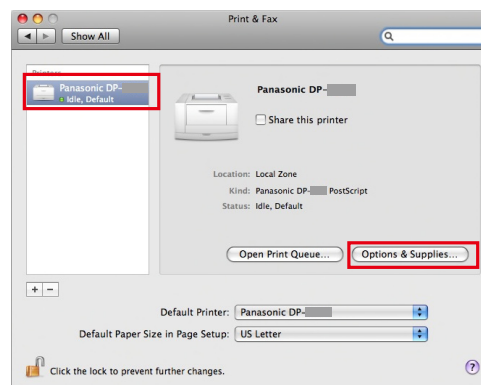
<For Panasonic Monochrome MFP>

- Panasonic_DP-xxxx FSxxx.ppd:
(Depicts a machine with the 2-Bin Finisher (DA-FS330)).
- Panasonic_DP-xxxx.ppd:
(Depicts a machine without a Finisher option or with the 1-Bin Saddle-Stitch Finisher (DA-FS355), 2-Bin Saddle-Stitch Finisher (DA-FS605), or 2-Bin Finisher (DA-FS600)).

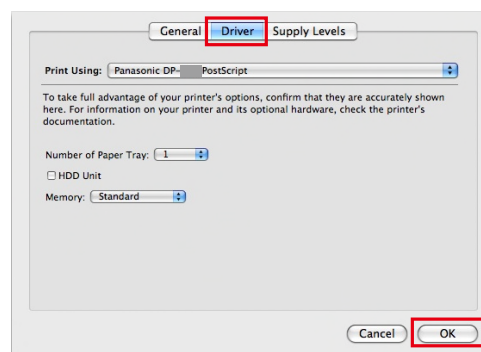
- 6 A status bar indicates that the printer is being created. Click “Add”.



- 7 Click “Option & Supplies ...” while selecting the added printer.



- 8 Select “Driver”, set a device option and then click “OK”.

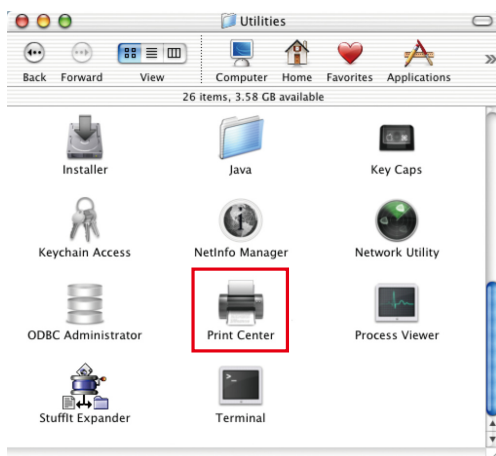


Device Settings

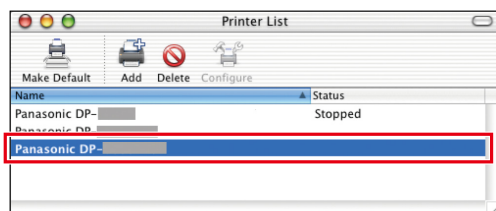
Setting up for Mac OS X 10.2

In the Printer Info window, it can be set the optional device settings in detail.

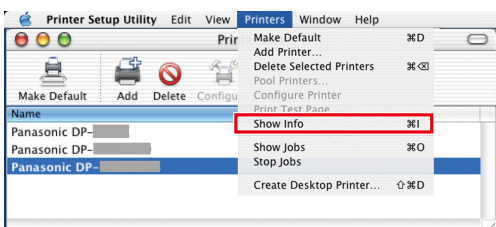
- 1 Open **Print Center** from **HDD > Applications > Utilities**.



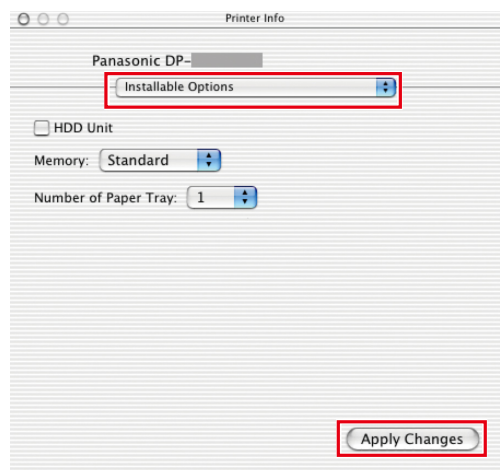
- 2 Select the corresponding printer from printer list.



- 3 Click **Printers** from menu bar, and then **Show Info**.



- 4 Setting the **Installable Options**, and then click **Apply Changes**.

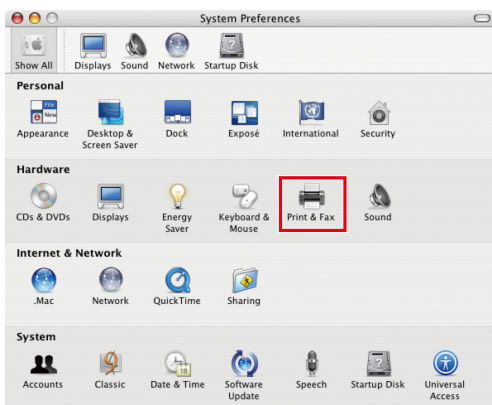


- The displayed item varies depending on the models.

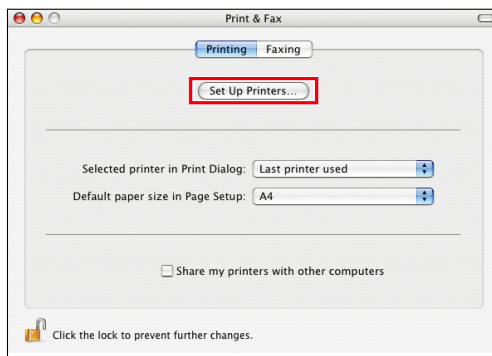
Setting up for Mac OS X 10.3

In the Printer Info window, it can be set the optional device settings in detail.

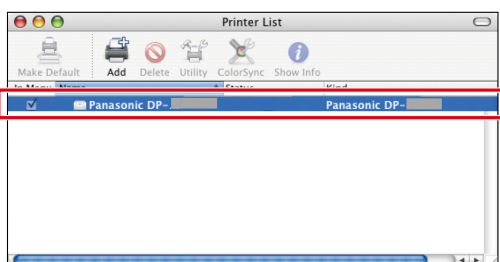
- 1 Open **"System Preferences"**, and click **"Print & Fax"**.



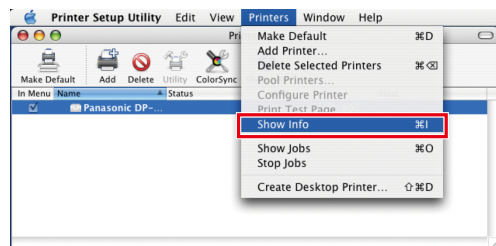
- 2 Click **"Set Up Printers..."**.



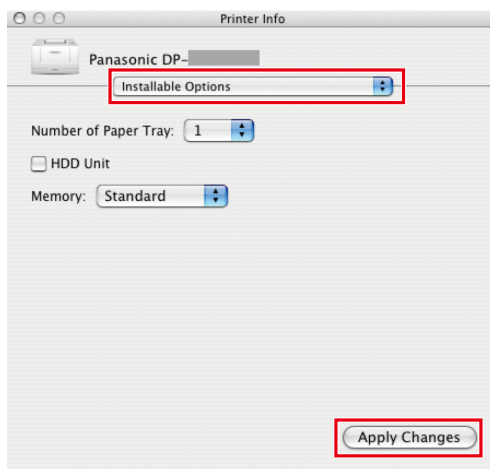
- 3 Select the corresponding printer from printer list.



- 4 Click **"Printers"** from menu bar, and then **"Show Info"**.



- 5 Setting the **"Installable Options"**, and then click **"Apply Changes"**.

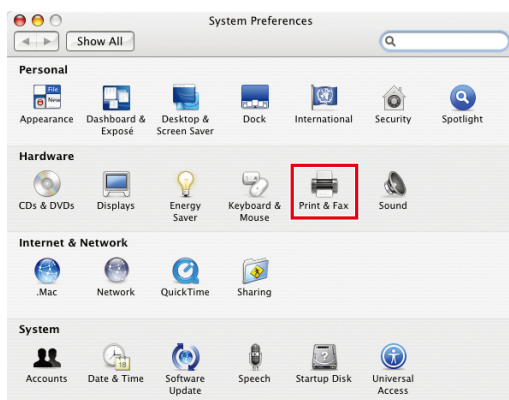


- The displayed item varies depending on the models.

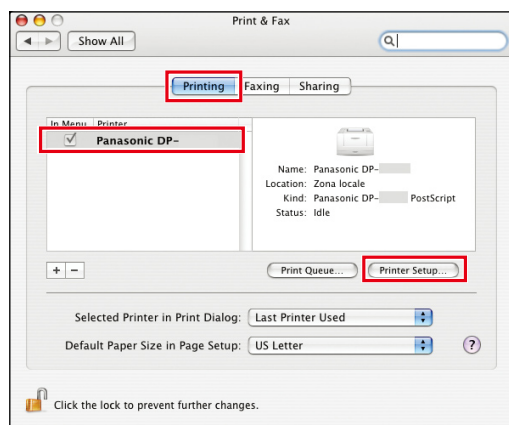
Setting up for Mac OS X 10.4

In the Printer Info window, it can be set the optional device settings in detail.

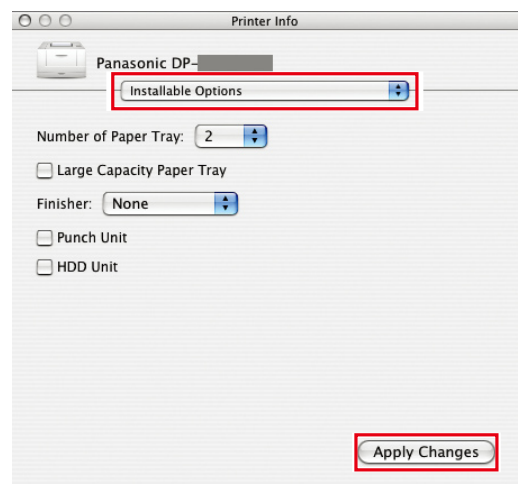
- 1 Open **“System Preferences”**, and then click **“Print & Fax”**.



- 2 Click **“Printing”**. Select printer, and then click **“Printer Setup...”**.



- 3 Setting the **“Installable Options”**, and then click **“Apply Changes”**.

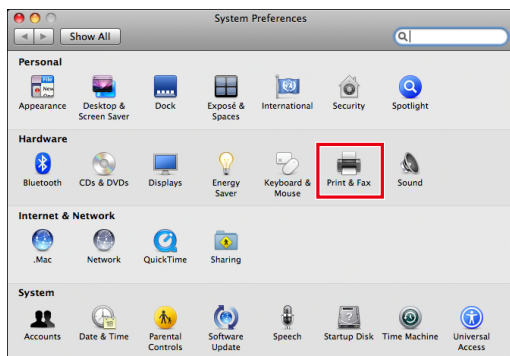


- The displayed item varies depending on the models.

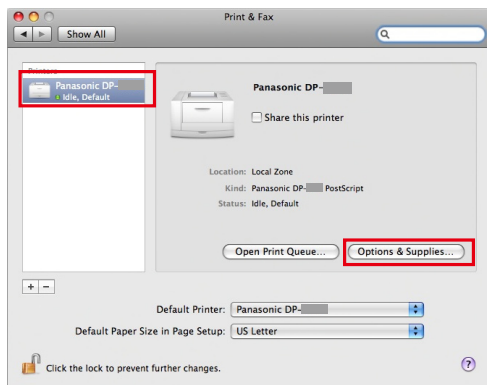
Setting up for Mac OS X 10.5

In the Option & Supplies window, it can be set the optional device settings in detail.

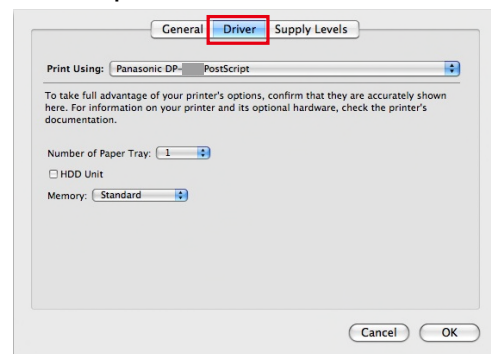
- 1 Open “**System Preferences**”, and then click “**Print & Fax**”.



- 2 Click “**Option & Supplies ...**” while selecting the added printer.



- 3 Select “**Driver**” item and set a device option.



- The displayed item varies depending on the models.

Utilities

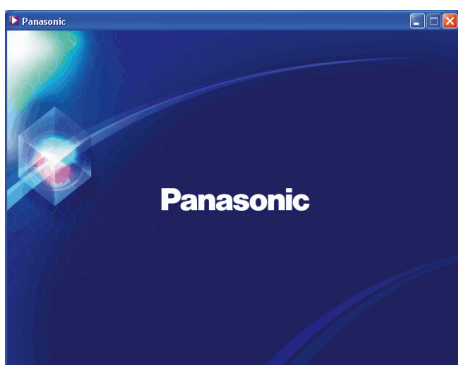
Job Status Utility

Installing the Job Status Utility

NOTE

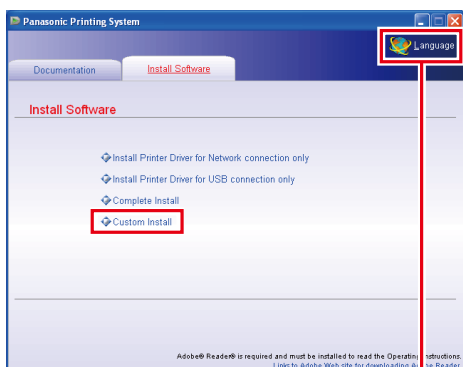
- When installing on Windows 2000/Windows XP/Windows Server 2003/Windows Vista/Windows Server 2008, logon to the computer/network using an account with administrator rights.
- Prior to the installation of the Job Status Utility, the settings of the PS Driver Security Utility are required.
- Job Status Utility operates only by Windows OS.

- 1 Insert the “**Panasonic Printing System**” CD-ROM.
The Panasonic opening screen is displayed.



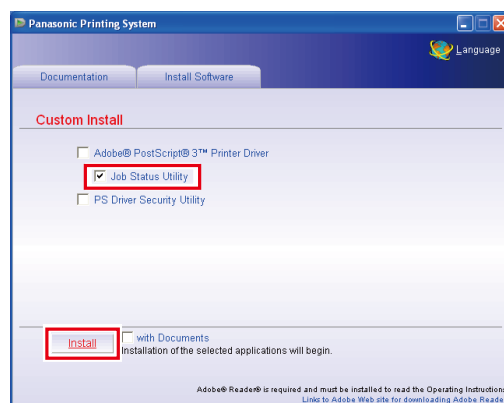
- If the CD-ROM does not launch automatically, double-click the CD-ROM icon displayed on the optical disk drive.

- 2 Select “**Custom Install**”.



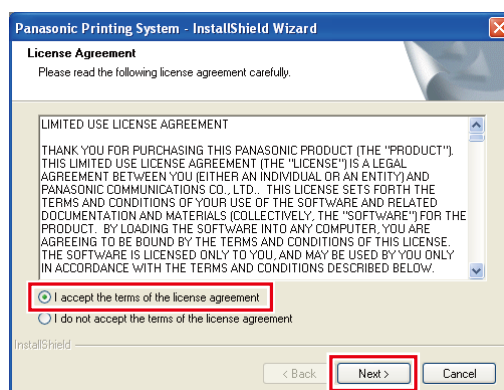
- The screen changes with models.
- Screen Language will be automatically selected by applying the language preset on your PC.
If you want to change the language, click “**Language**”, and then choose the desired language, and click “**OK**”.

- 3 Check “**Job Status Utility**”, and then click “**Install**”.

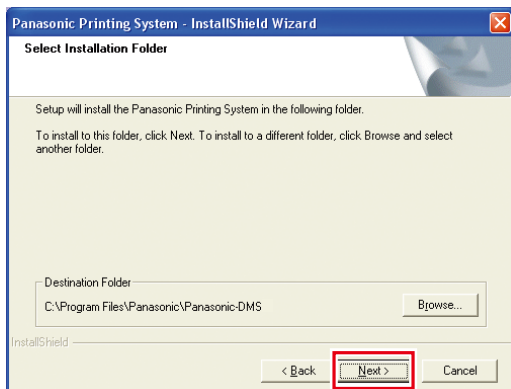


- The screen changes with models.

- 4 Check “**I accept the terms of the license agreement**”, and then click “**Next**”.

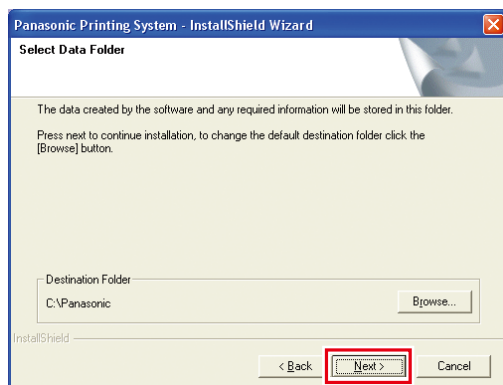


5 Click "Next".



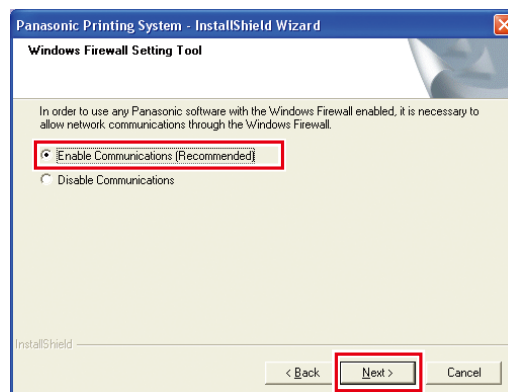
- Above Screen will not be shown when another model's **Panasonic Printing System** has been installed.
- If you wish to change the folder, click "**Browse**", and then the desired folder to install.

6 Click "Next".



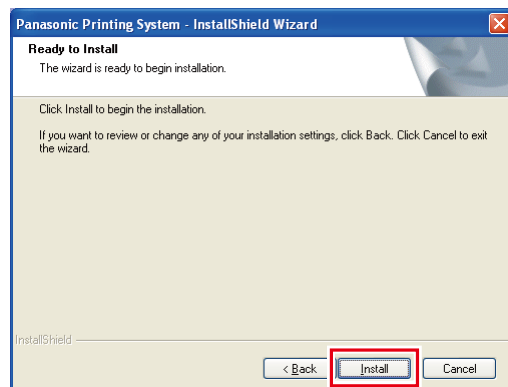
- Above Screen will not be shown if there is other model's **Panasonic Printing System** installed.
- If you wish to change the folder, click "**Browse**", and then the desired folder to install.

7 Select "Enable Communications (Recommended)", and then click "Next".

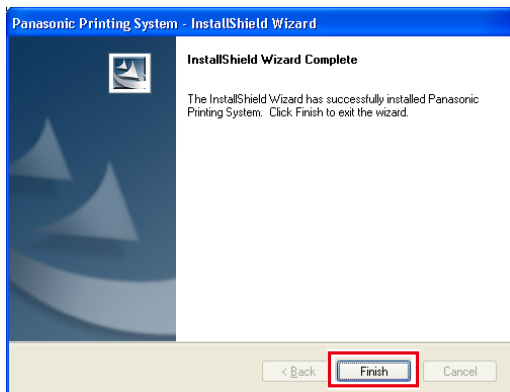


- Above screen only displays when you are installing the Job Status Utility on Windows XP (Service Pack 2 or later), Windows Server 2003 (Service Pack 1 or later), Windows Vista or Windows Server 2008.

8 Click "Install".



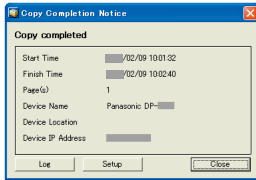
9 Click **"Finish"**.




Memo:

Setting Up the Job Status Utility

Ex: Copy Job




The Job Status Utility software will display the pop-up Completion Notice on your Windows Desktop when the Print, Copy, or a Fax job is completed. The information displayed in the Completion Notice vary according to the type of job being performed.


- 1 Confirm that the Job Status Utility icon  is shown on the task bar.

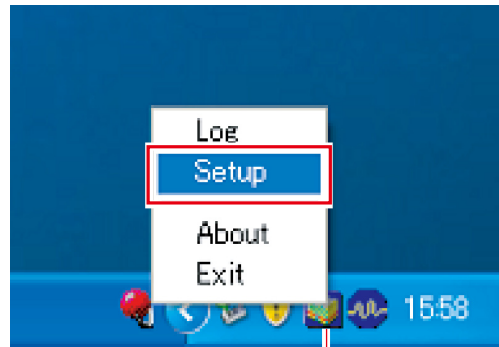


Panasonic Job Status Utility Icon

- If the Job Status Utility icon  is not shown on the task bar, click **Start**, select **All Programs** → **Panasonic** → **Job Status Utility** → **Job Status Utility** to activate the Job Status Utility icon.

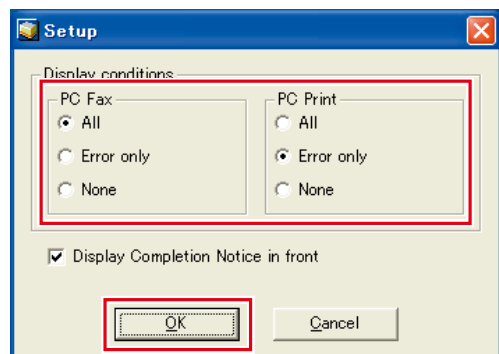
- 2 For PC Fax and PC Print only Setup the Job Status Utility as described next.

- 3 Right-click the Job Status Utility icon  on the task bar, and select **Setup** from the menu.



Panasonic Job Status Utility Icon

- 4 Choose the display condition for the Setup window, and then select **OK**.



- All** : Always displays after each transmission or print job.
Error only : Displays only when an error occurs.
None : Does not display.

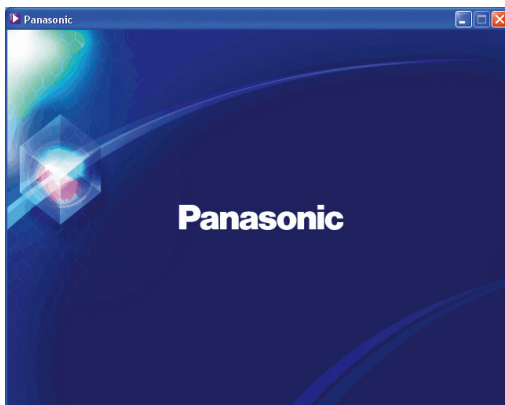
PS Driver Security Utility

Installing the PS Driver Security Utility for Windows

NOTE

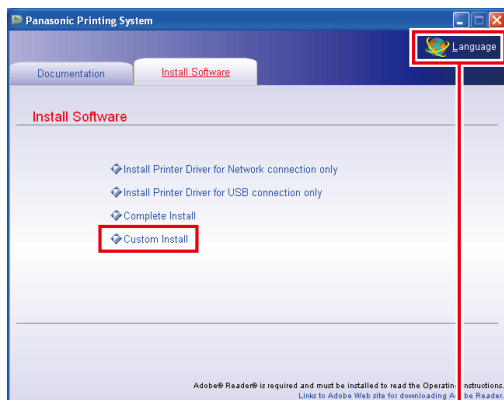
- When installing on Windows 2000/Windows XP/Windows Server 2003/Windows Vista/Windows Server 2008, logon to the computer/network using an account with administrator rights.
- Set the User ID and Password using the PS Driver Security Utility.

- 1 Insert the “**Panasonic Printing System**” CD-ROM.
The Panasonic opening screen is displayed.



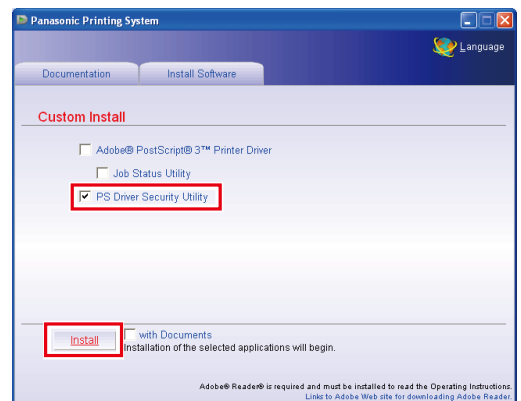
- If the CD-ROM does not launch automatically, double-click the CD-ROM icon displayed on the optical disk drive.

- 2 Select “**Custom Install**”.



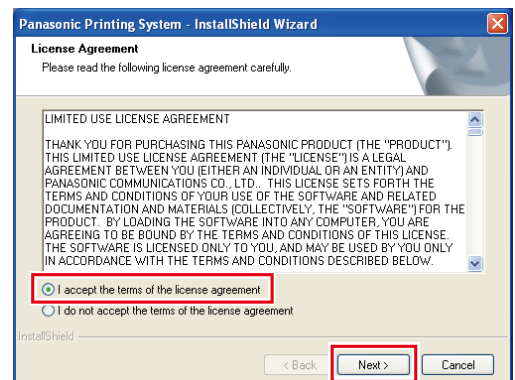
- The screen changes with models.
- Screen Language will be automatically selected by applying the language preset on your PC. If you want to change the language, click “**Language**”, and then choose the desired language, and click “**OK**”.

- 3 Check “**PS Driver Security Utility**”, and then click “**Install**”.

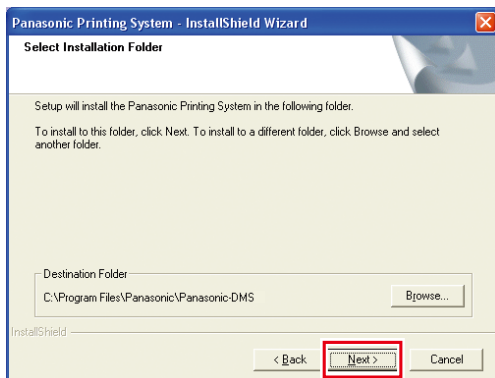


- The screen changes with models.

- 4 Check “**I accept the terms of the license agreement**”, and then click “**Next**”.

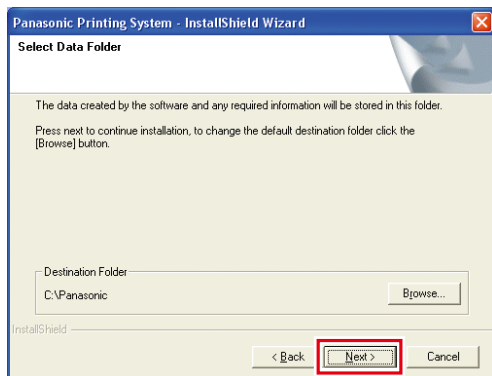


5 Click "Next".



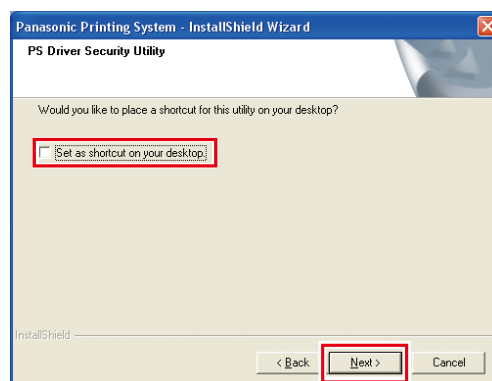
- Above Screen will not be shown when another model's **Panasonic Printing System** has been installed.
- If you wish to change the folder, click "**Browse**", and then the desired folder to install.

6 Click "Next".



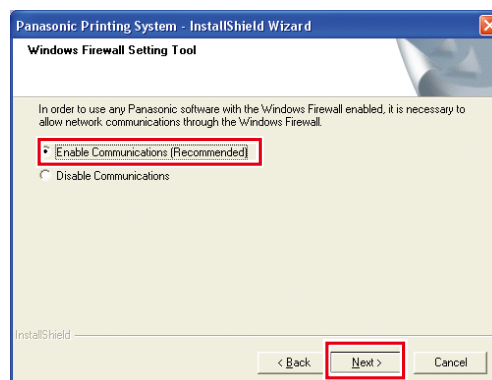
- Above Screen will not be shown if there is other model's **Panasonic Printing System** installed.
- If you wish to change the folder, click "**Browse**", and then the desired folder to install.

7 Check "Set as shortcut on your desktop", and then click "Next".



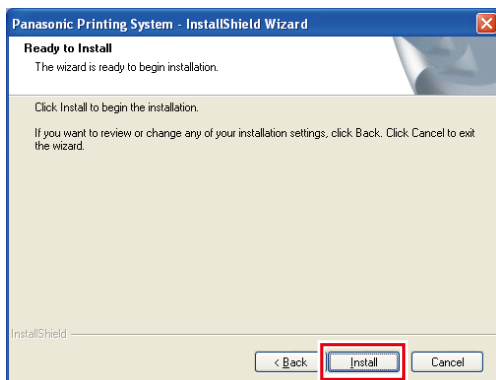
- Uncheck the box if you do not want to install any of the displayed software.

8 Select "Enable Communications (Recommended)", and then click "Next".

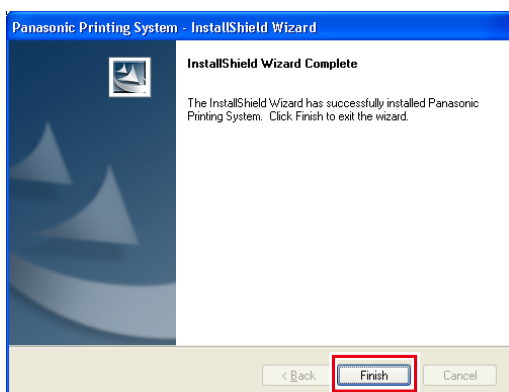


- Above screen only displays when you are installing the Job Status Utility on Windows XP (Service Pack 2 or later), Windows Server 2003 (Service Pack 1 or later), Windows Vista or Windows Server 2008.

9 Click “Install”.



10 Click “Finish”.



Memo:

Using the PS Driver Security Utility for Windows

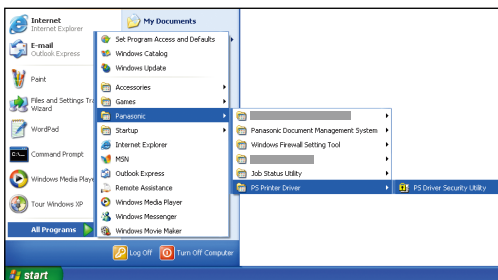
NOTE

- When installing on Windows 2000/Windows XP/Windows Server 2003/Windows Vista/Windows Server 2008, logon to the computer/network using an account with administrator rights.
- When you connect your PC to multiple printers, you do not need to install PS Driver Security Utility repeatedly when it has already been installed.

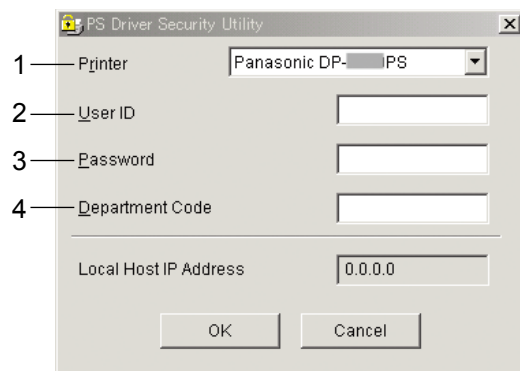
- 1 Double click the **PS Driver Security Utility** icon on the desktop.



- When opening from a start menu, click [**All Programs > Panasonic > PS Printer Driver > PS Driver Security Utility**]



- 2 The setting screen of PS Driver Security Utility appears.



1. Printer
Select the model No. of this machine.
2. User ID
Type User ID (Up to 8 digits). User ID is required when printing the Confirmation Print, Mail Box and Security Box.
3. Password
Type the Password (4-digit (numeric) or 8-16 characters (alphanumeric)) for a Security Box.
4. Department Code
Type the Department Code (Up to 8 digits) which is used for the administrator.

NOTE

The information on the before item of 1-4 inputs, and if PS Driver Security Utility is opened again, Local Host IP Address will appear automatically.

- 3 Click **“OK”**.

Installing the PS Driver Security Utility for Macintosh

1 Exit from all applications, then insert the **Panasonic Printing System CD** into the CD-ROM drive.

2 Double-click the CD icon on the desktop.

For Mac OS 8.6/9.x :

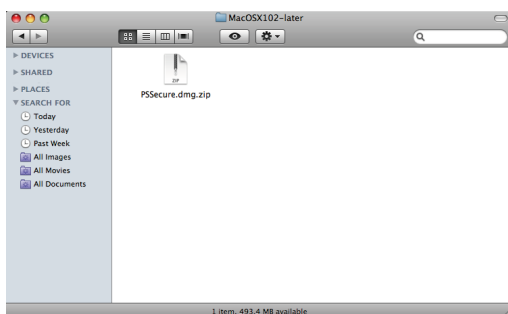
Open **Macintosh > English > SecurityUtility > MacOS9** folder.

For Mac OS X 10.1 :

Open **Macintosh > English > SecurityUtility > MacOSX101** folder.

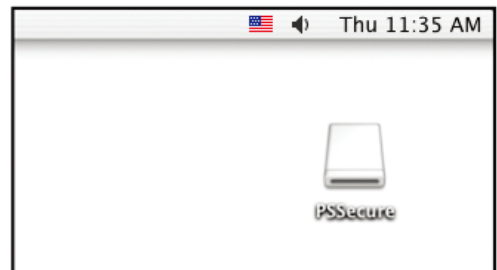
For Mac OS X 10.2, later :

Open **Macintosh > English > SecurityUtility > MacOSX102-later** folder.



3 Copy **PPSecure.dmg.zip** (**PPSecure.dmg.sit** for OS X 10.1, **PPSecure.bin** for OS 8.6/9.x) into your desktop. Then double-click the **PPSecure.dmg.zip** (**PPSecure.dmg.sit** for OS X 10.1, **PPSecure.bin** for OS 8.6/9.x) icon to decompress it.

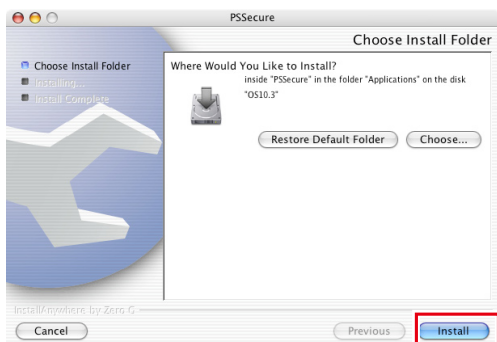
4 Double-click **PPSecure.dmg** or **PPSecure** on your desktop (Only OS X).



5 Double-click the **PPSecure** icon to start the setup.

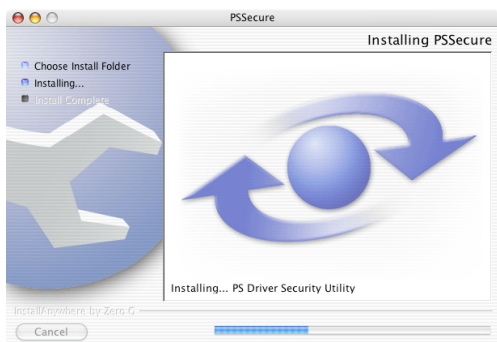


6 Click “Install”.

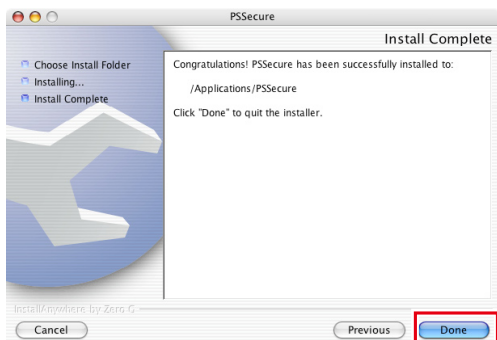


- If you want to change install folder, click the “Choose...” button, and select desired folder name.

7 A progress bar indicates that the PS Driver Security Utility is being installed.



8 Click “Done”.



9 The PS Driver Security Utility icon is created on your desktop.

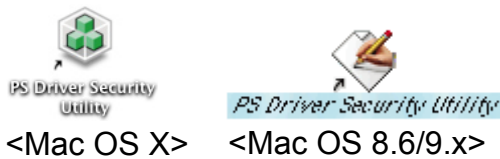


NOTE

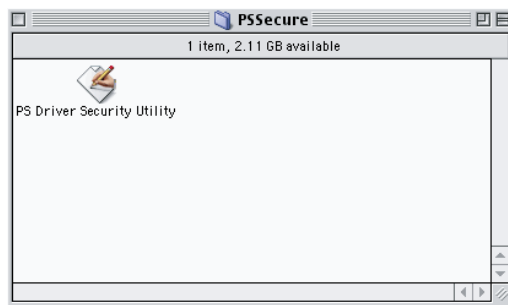
For Mac OS 8.6/9.x, the application is installed under **Applications (Mac OS 9) > PPSecure** folder by default.
For Mac OS 10.1~10.5, the application is installed under **Applications > PPSecure** folder by default.

Using the PS Driver Security Utility for Macintosh

- 1 Double-click the icon of **PS Driver Security Utility** on a desktop.



Since PS Driver Security Utility is installed in the **[HDD] > [Applications] > [PSSecure]** folder as initial setting.

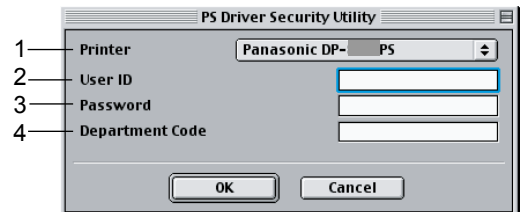


<Mac OS 8.6/9.x>

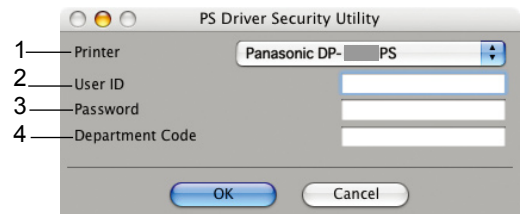


<Mac OS X>

- 2 PS Driver Security Utility appears.



<Mac OS 8.6/9.x>



<Mac OS X>

- 3 Input the following information.

1. Printer
Select the model No. of this machine.
2. UserID
Type User ID (Up to 8 digits). User ID is required when printing the Confirmation Print, Mail Box and Security Box.
3. Password
Type the Password (4-digit (numeric) or 8-16 characters (alphanumeric)) for a Security Box.
4. Department Code
Type the Department Code (Up to 8 digits) which is used for the administrator.

- 4 Click **"OK"**.

Memo

USA Only

WARRANTY

PANASONIC COMMUNICATIONS COMPANY OF NORTH AMERICA, MAKES NO WARRANTIES, GUARANTEES OR REPRESENTATIONS, EXPRESSED OR IMPLIED, TO CUSTOMER WITH RESPECT TO THIS PANASONIC MACHINE, INCLUDING BUT NOT LIMITED TO, ANY IMPLIED WARRANTY OF MERCHANTABILITY OR FITNESS FOR A PARTICULAR PURPOSE.

PANASONIC COMMUNICATIONS COMPANY OF NORTH AMERICA, ASSUMES NO RISK AND SHALL NOT BE SUBJECT TO LIABILITY FOR ANY DAMAGE, INCLUDING, BUT NOT LIMITED TO DIRECT, INDIRECT, SPECIAL, INCIDENTAL OR CONSEQUENTIAL DAMAGES OR LOSS OF PROFITS SUSTAINED BY THE CUSTOMER IN CONNECTION WITH THE USE OR APPLICATION OF THIS PANASONIC MACHINE. SEE YOUR DEALER FOR DETAILS OF DEALER'S WARRANTY.

For Service, Call: _____

Panasonic Communications Company of North America
Unit of Panasonic Corporation of North America
One Panasonic Way
Secaucus, New Jersey 07094
<http://panasonic.net>

Panasonic Canada Inc.
5770 Ambler Drive
Mississauga, Ontario L4W 2T3
<http://www.panasonic.ca>

For Customer Support
(Except for USA and Canada Users):
Panasonic Communications Co., Ltd.
Fukuoka, Japan
<http://panasonic.net>

I1006-11128 (10)
PJQMC0923RA
April 2009
Published in Japan