

Printer Driver for Red Hat® Linux®

You can print from any application by using CUPS (Common Unix Printing System), which is the printing system for Linux.

<Hardware requirements>

To use this software, the following hardware is required.

OS: Red Hat Enterprise Linux® Desktop 5 / 6 / 7

Language: English / German / French / Italian / Spanish / Russian / Polish / Portuguese / Czech / Simplified Chinese / Traditional Chinese / Brazilian Portuguese / Japanese

Device: Panasonic Multi-Function Printer KX-MC6000 / DP-MC210 / KX-MB3000 / DP-MB300 / KX-MB2000 / KX-MB2060 / KX-MB1500 / KX-MB2200 / KX-MB2500 / DP-MB250 / DP-MB310 / KX-MB2090 / KX-MB1600 / KX-MB2100 / KX-MB2571 / DP-MB251 / DP-MB311 / DP-MB500 series

Connection I/F: USB or LAN interface

<File download>

mccgdi-2.0.10-i686.tar.gz (for 32bit)

mccgdi-2.0.10-x86_64.tar.gz (for 64bit)

The following is explained using Red Hat 6 (32bit) and KX-MC6020 as examples.

* When you add printer driver on Linux, execute <Setting up the printer driver>.

* When you update printer driver on Linux, execute <Uninstalling the printer driver> and <Setting up the printer driver> again.

<Installing the printer driver>

1) Select the downloaded file "mccgdi-2.0.10-i686.tar.gz", uncompress it by selecting "Extract Here" in the right button menu.

2) Open the Terminal application. ("Applications" -> "System Tools" -> "Terminal" in the menu)

3) Login as an administrator.

```
$ su
```

(Password may be needed.)

4) Move to the directory where the file is uncompressed.

e.g.) If you uncompress the file at the desktop:

```
# cd /home/user_name*1/Desktop/mccgdi-2.0.10-i686
```

(*1 user_name: Follow the setting of the PC.)

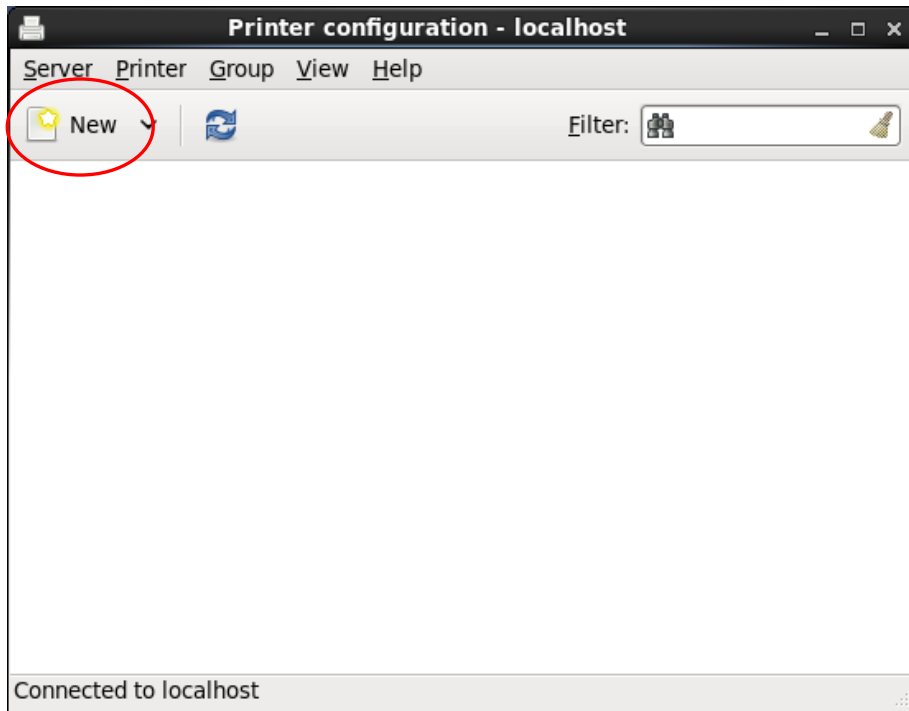
5) Install the printer driver.

```
# ./install-driver
```

Close the Terminal application.

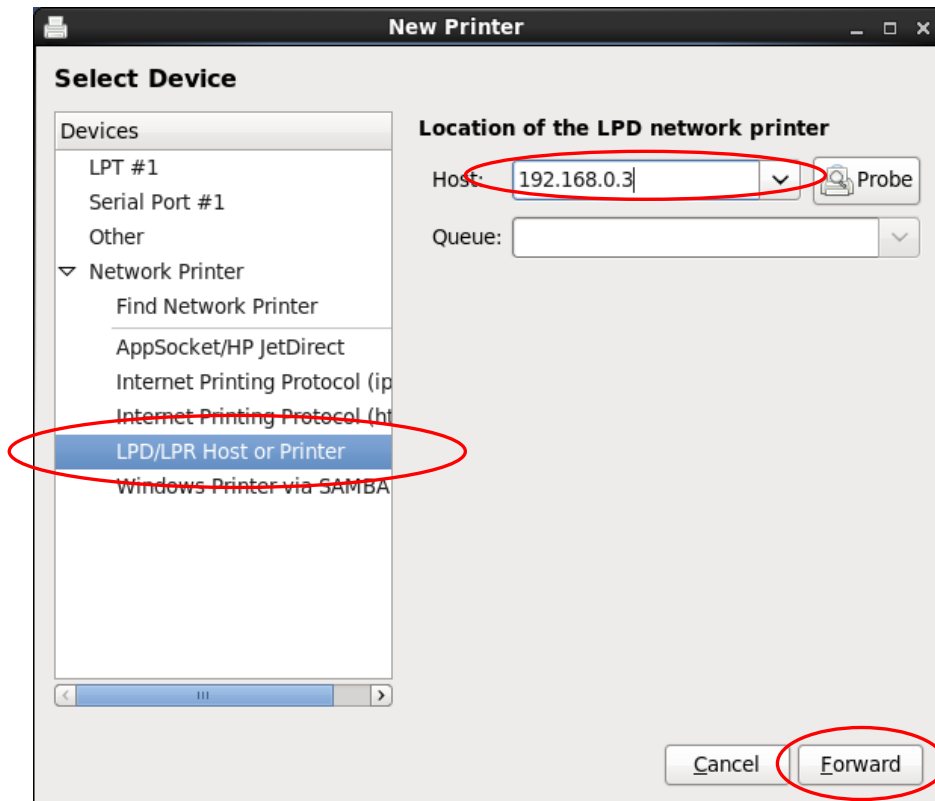
<Setting up the printer driver>

- 1) Connect LAN or USB cable between the PC and KX-MC6020.
- 2) Open "Printer configuration - localhost". ("System" -> "Administration" -> "Printing" in the menu)
Click "New" button. (Password may be needed.)
When "Adjust Firewall" message is displayed, click "Do It Later" button.



3-a) [In the case of LAN connection]

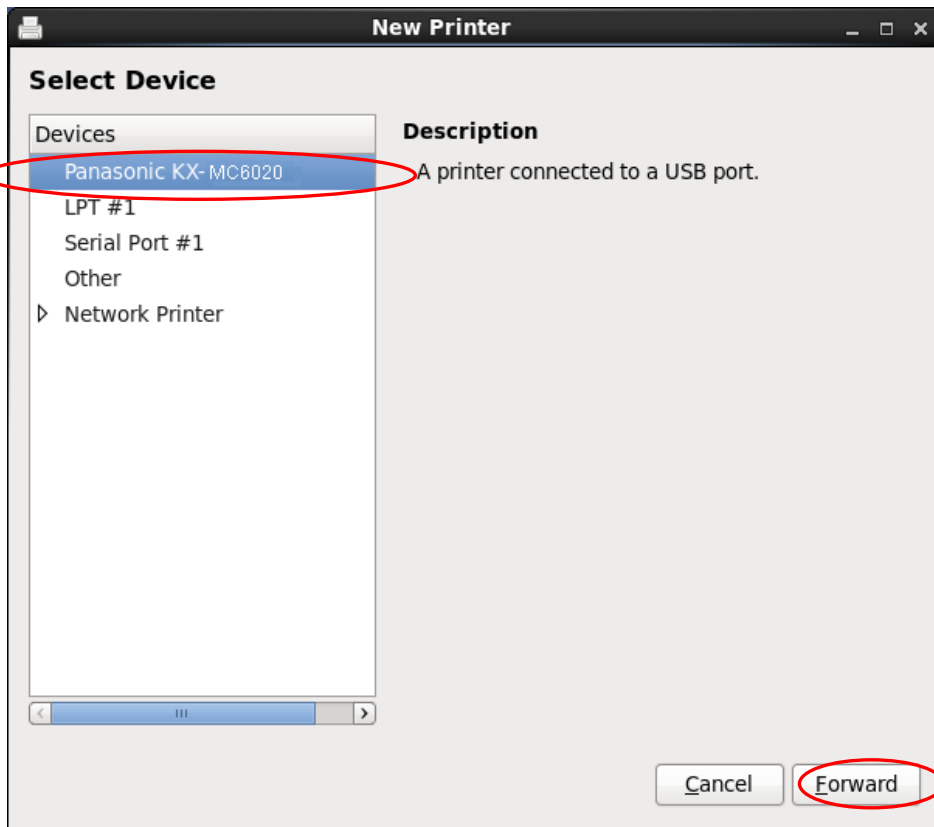
- Select "LPD/LPR Host or Printer" from "Select Device" list.
- Input the IP address of KX-MC6020 into "Host" box.
- Click "Forward" button.



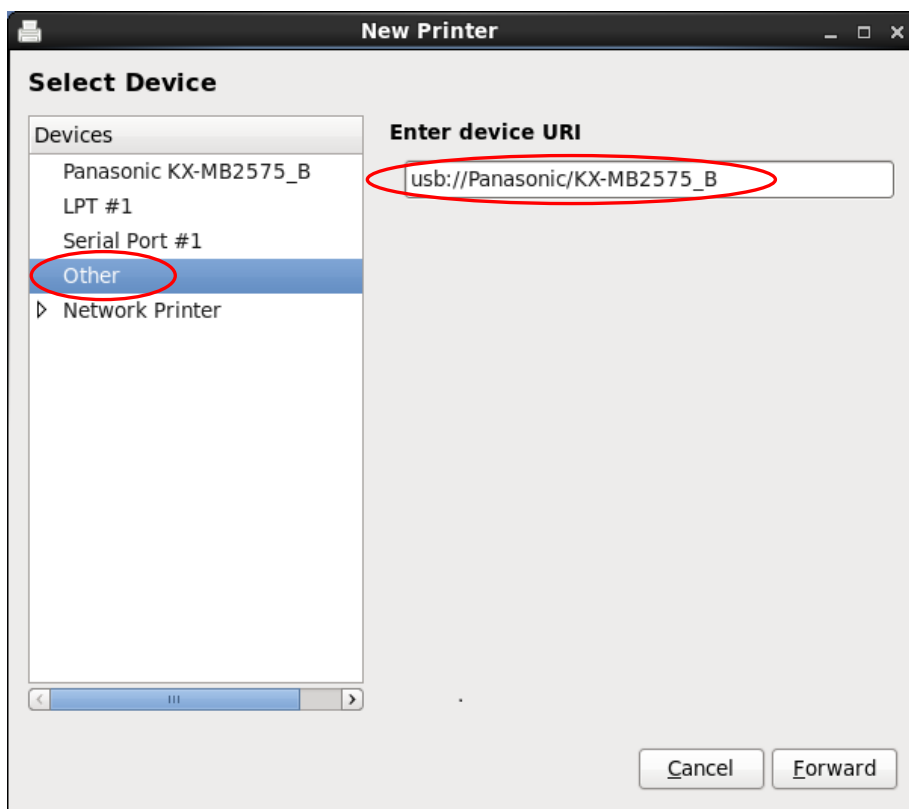
3-b) [In the case of USB connection]

Select "Panasonic KX-MC6020" from "Select Device" list.

Click "Forward" button.



- * When installing the following models with the optional lower input tray, select “Other” from “Select Device” list.
And enter the device URI for each model.

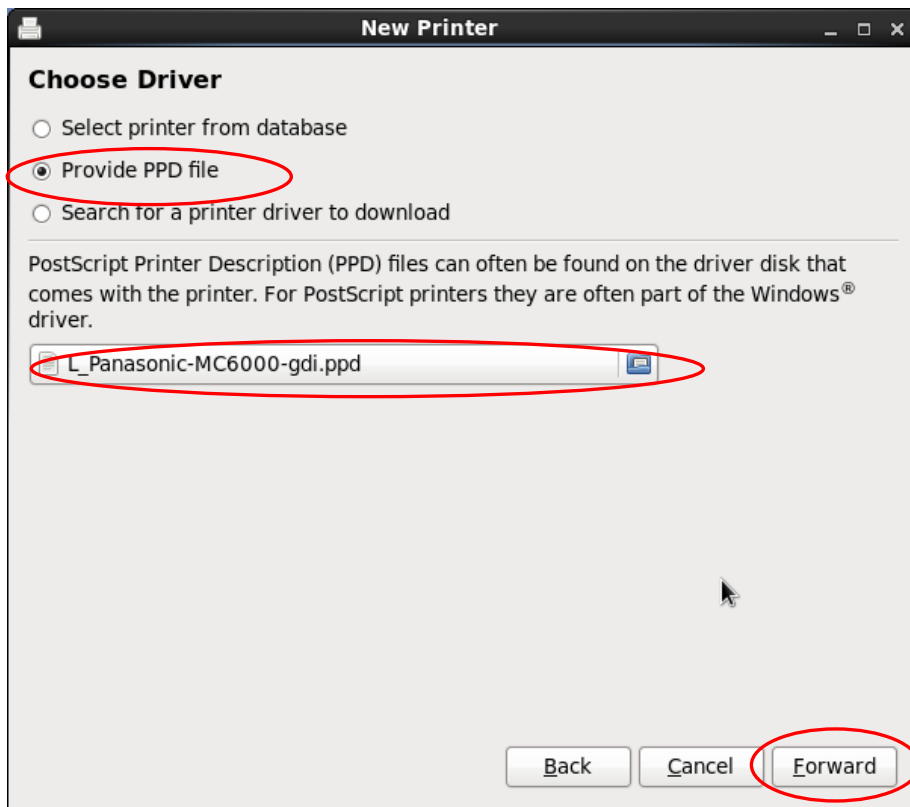


URI table

Model	URI
KX-MB2510	usb://Panasonic/KX-MB2510
KX-MB2515JT/EU	usb://Panasonic/KX-MB2515_B
KX-MB2515 (except JT/EU models)	usb://Panasonic/KX-MB2515
KX-MB2538	usb://Panasonic/KX-MB2538
KX-MB2540	usb://Panasonic/KX-MB2540
KX-MB2545JT/EU	usb://Panasonic/KX-MB2545_B
KX-MB2545 (except JT/EU models)	usb://Panasonic/KX-MB2545
KX-MB2575	usb://Panasonic/KX-MB2575_B
DP-MB250	usb://Panasonic/DP-MB250
DP-MB310	usb://Panasonic/DP-MB310_B
KX-MB2571	usb://Panasonic/KX-MB2571
DP-MB251	usb://Panasonic/DP-MB251
DP-MB311	usb://Panasonic/DP-MB311_B
DP-MB545JT/EU	usb://Panasonic/DP-MB545_B
DP-MB545 (except JT/EU models)	usb://Panasonic/DP-MB545
DP-MB539	usb://Panasonic/DP-MB539
DP-MB537	usb://Panasonic/DP-MB537_B
DP-MB536	usb://Panasonic/DP-MB536

- 4) Select "Provide PPD file" from "Choose Driver".
Select the PPD file in the following directory for each model.
"/usr/share/cups/model/panasonic"
* If PPD files do not exist in it, search the following directories.
"/usr/local/share/cups/model/panasonic"
"/usr/share/ppd/panasonic"
"/usr/local/share/ppd/panasonic"

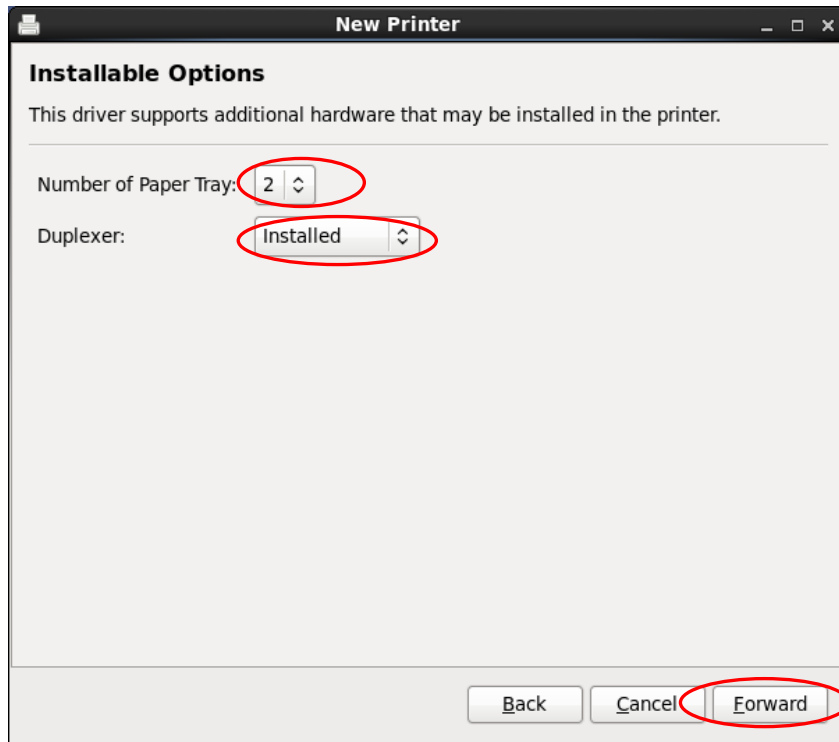
Click "Forward" button.



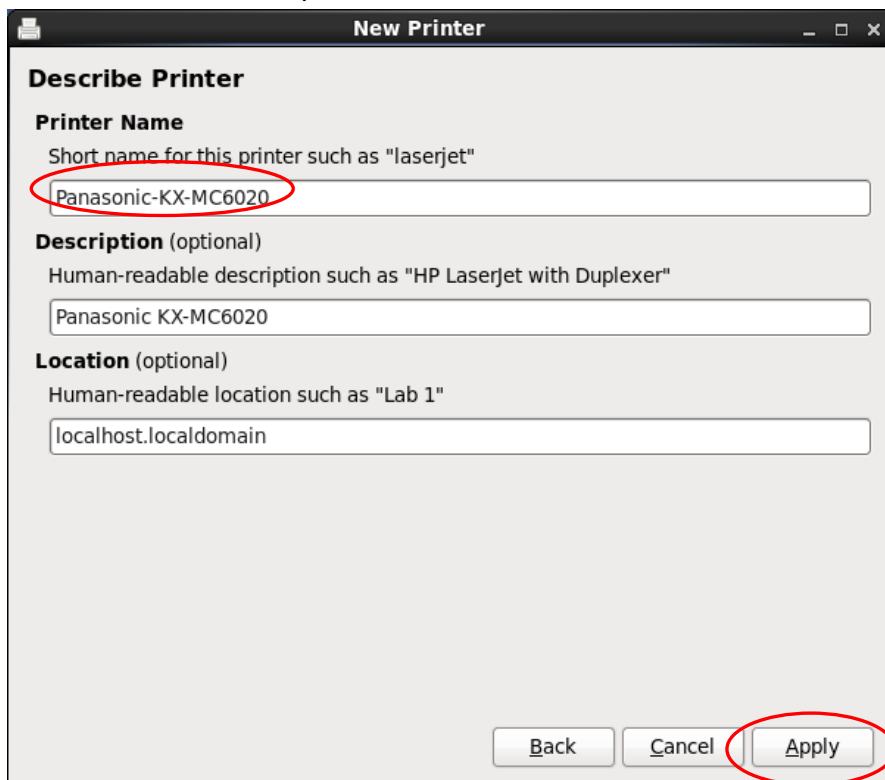
PPD file name table

Model		PPD file
Series	Name	
KX-MC6000 DP-MC210	KX-MC6008 / 6015 / 6020 / 6028 / 6040 / 6255 / 6260 DP-MC210	L_Panasonic-MC6000-gdi.ppd
KX-MB3000 DP-MB300	KX-MB3010CX / 3020CX / 3150CX DP-MB300-CX / 320-CX	L_Panasonic-MB3000T-gdi.ppd
	KX-MB3010 / 3018 / 3020 / 3028 / 3030 DP-MB300 / 340 / 350 (except CX models)	L_Panasonic-MB3000-gdi.ppd
KX-MB2000	KX-MB2001	L_Panasonic-MB2001-gdi.ppd
KX-MB2060	KX-MB1900 / 2000 / 2003 / 2008 / 2010 / 2020 / 2025 / 2030 / 2033 / 2038 KX-MB2051 / 2060 / 2061 / 2062	L_Panasonic-MB2000-gdi.ppd
	KX-MB2025JT/FR/FX/GR/G/PD KX-MB2030JT/FR/FX/GR/G/PD (Energy Star 2.0 supported models only)	L_Panasonic-MB2030C-gdi.ppd
KX-MB1500	KX-MB1510 / 1518 / 1536 / 1558	L_Panasonic-MB1510-gdi.ppd
	KX-MB1500 / 1508 / 1520 / 1528 / 1530 / 1538	L_Panasonic-MB1500-gdi.ppd
KX-MB2200	KX-MB2230JT/EU, MB2270JT/EU	L_Panasonic-MB2200_B-gdi.ppd
	KX-MB2230 / 2235 / 2238 / 2270 / 2275 (except JT/EU models)	L_Panasonic-MB2200-gdi.ppd
KX-MB2500 DP-MB250 / 310	KX-MB2515JT/EU, MB2545JT/EU, MB2575JT/EU DP-MB310JT/EU	L_Panasonic-MB2500_B-gdi.ppd
	KX-MB2510 / 2515 / 2538 / 2540 / 2545 DP-MB250 (except JT/EU models)	L_Panasonic-MB2500-gdi.ppd
KX-MB2090	KX-MB2083 / 2085 / 2088 / 2090	L_Panasonic-MB2090-gdi.ppd
KX-MB1600	KX-MB1663 / 1665 / 1666 / 1667 / 1678 / 1679	L_Panasonic-MB1600-gdi.ppd
KX-MB2100	KX-MB2120EU/JT/G/HX, MB2130EU/JT/G/HX, MB2170EU/JT/G/HX	L_Panasonic-MB2100_B-gdi.ppd
	KX-MB2110 / 2117 / 2120 / 2128 / 2130 / 2137 / 2138 / 2168 / 2170 / 2177 / 2178 (except EU/JT/G/HX models)	L_Panasonic-MB2100-gdi.ppd
KX-MB2571 DP-MB251 / 311	KX-MB2571	L_Panasonic-MB251-gdi.ppd
	DP-MB251 DP-MB311	L_Panasonic-MB311_B-gdi.ppd
DP-MB500	DP-MB545JT/EU	L_Panasonic-MB545_B-gdi.ppd
	DP-MB539 / 545 (except JT/EU models)	L_Panasonic-MB545-gdi.ppd
	DP-MB537	L_Panasonic-MB537_B-gdi.ppd
	DP-MB536	L_Panasonic-MB536-gdi.ppd

- 5) Modify the printer options in “Installable Options”, if necessary.
Select the input tray count in “Number of Paper Tray”. (If you have the optional lower input tray, this count is “2”.)
Select the duplex unit information in “Duplexer”. (If you have the automatic duplex unit, this is “Installed”.)
Click “Forward” button.

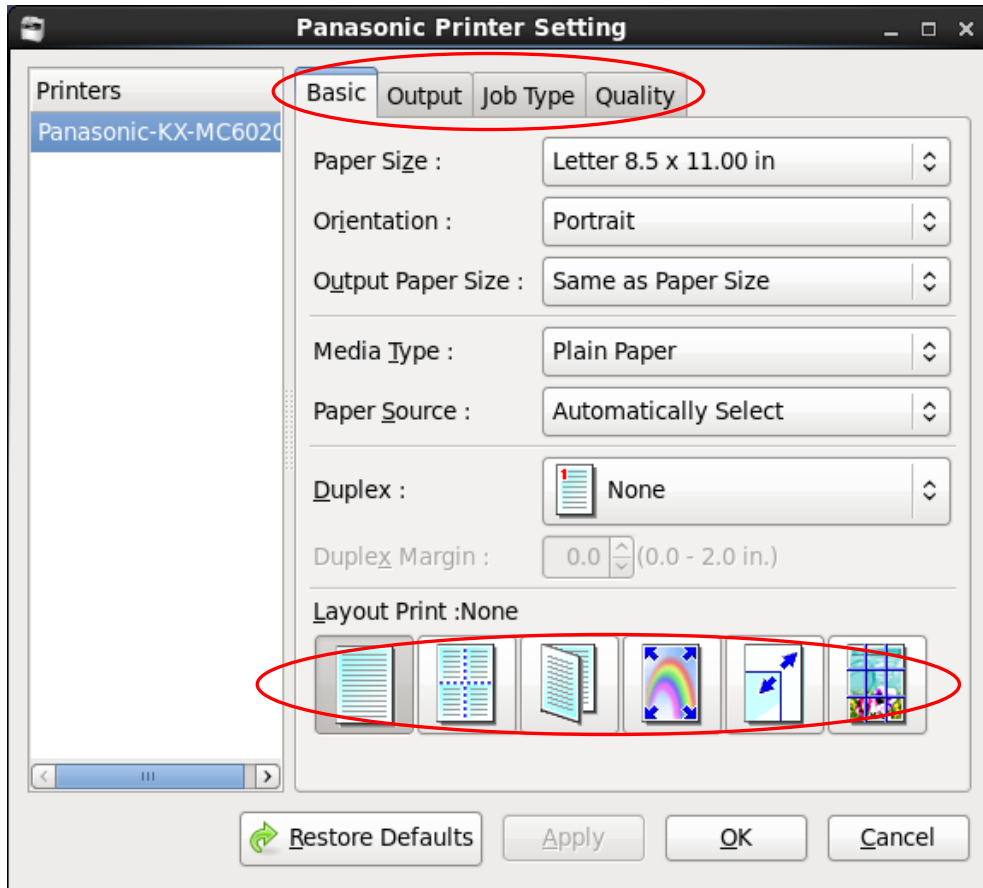


- 6) Modify the printer name in “Printer Name” box, if necessary.
Click “Apply” button. (Password may be needed.)
The printer driver installation is completed.



<Information for printing>

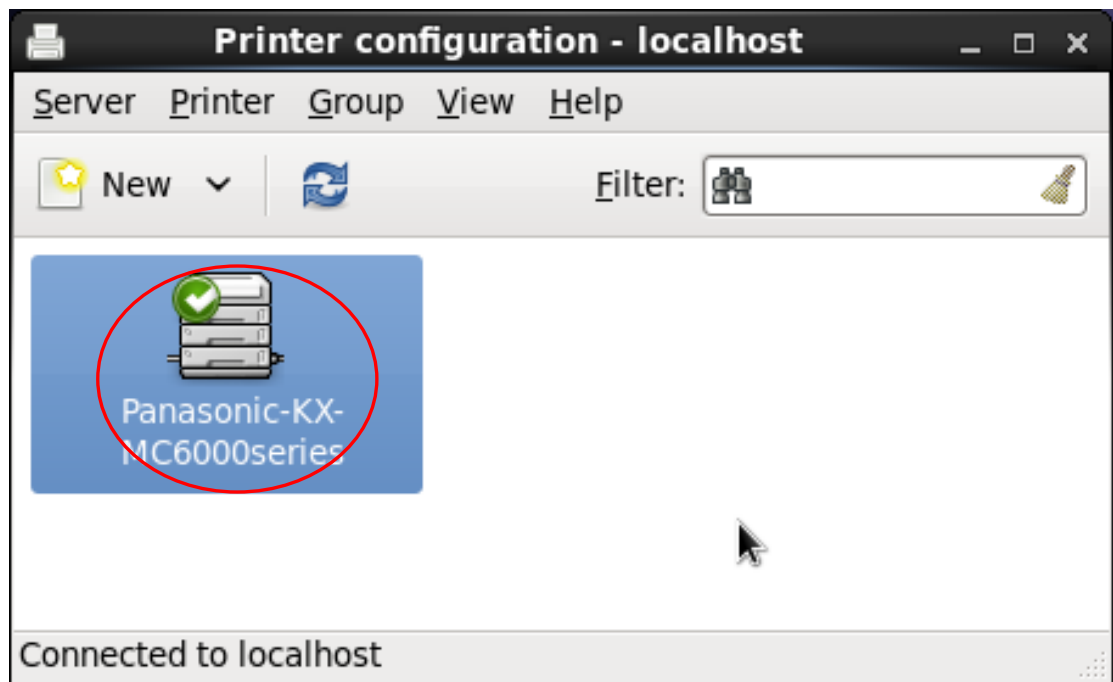
- 1) There are 2 types of printer settings: The setting in each application and “Panasonic Printer Setting”. If these settings are different, the setting in the application has higher priority.
“Panasonic Printer Setting” can be executed by “System” -> ”Preferences” -> “Panasonic Printer Setting” in the menu.
You can change the details of the printer settings from “Basic”, “Output”, “Job Type” and “Quality” tabs.
In “Basic” tab, you can set additional printing layout by selecting from “Pages per Sheet”, “Booklet”, “Fit to Output”, “Zoom” and “Poster” icons.



- 2) For the setting items not included in the applications, the items in “Panasonic Printer Setting” are used as default.
- 3) When you cannot print as the settings in the application, set the same items in “Panasonic Printer Setting”.
- 4) When you add the optional lower input tray or the automatic duplex unit, open the Printer Setting in the OS’s “Printer configuration - localhost” (“System” -> ”Administration” -> “Printing“ in the menu) and change the items in “Installable Options“ same as No.5 of the above in <Setting up the printer driver>.
- 5) The Printer Setting in the OS’s “Printer configuration - localhost” (“System” -> ”Administration” -> “Printing“ in the menu) is unavailable except in situation No.4 of the above. Instead, use “Panasonic Printer Setting”.
- 6) In the case of starting up Red Hat 5 with USB connection, “Specify Printer Driver” message may be displayed. Then select “Cancel”.
- 7) Due to OS or printing system limitation, there are cases where you cannot print as the settings.

<Uninstalling the printer driver>

- 1) Open the Terminal application. ("Applications" -> "System Tools" -> "Terminal" in the menu)
- 2) Login as an administrator.
\$ su
(Password may be needed.)
- 3) Uninstall the printer driver.
Move to the folder where the uninstaller is, execute "uninstall-driver".
cd /usr/local/share/panasonic/printer
./uninstall-driver
Close the Terminal application.
- 4) Open "Printer configuration - localhost". ("System" -> "Administration" -> "Printing" in the menu)
Select "Panasonic-KX-MC6000series", and select "Delete" in the right button menu.
Close "Printer configuration - localhost".



* When you delete one printer driver only, execute No.4 only of the above.

- Linux is a registered trademark or a trademark of Linus Torvalds in the United States and other countries.
- Red Hat and Red Hat Enterprise Linux are registered trademarks or trademarks of Red Hat, Inc. in the United States and other countries.